



The Right Connection™



***2011 Brass & Stainless,
Hose & Pipe Fittings***

Dixon Group Canada Limited

Customer Service 877-963-4966

Table of Contents

Description	Page #	Description	Page #
Beaded Hose Barb Fittings	3	Garden Hose Fittings	26 - 30
Beaded Hose Barb x Male NPT	3	Sets- GHT Swivel Nut x Medium Length Hose	26
Standard Hose Barb Fittings	4 - 10	Female- GHT Swivel Nut x Medium Length Hose	26
Hose Barb x Male NPT	4	Male- GHT x Medium Length Hose Insert	26
Hose Barb x Male NPT-Live Swivel	4	Sets- GHT Swivel Nut x Long Hose Insert	27
Hose Barb x Female NPT-Solid	5	Female- GHT Swivel Nut x Long Hose Insert	27
Hose Barb x Female NPT -Live Swivel	5	Male- GHT x Long Hose Insert	27
Hose Barb x Female NPSM Ball Seat Swivel	6	Female GHT x GHT Swivel	28
Hose Barb x Female NPSM Washer Seal Swivel	6	GHT Caps	28
Hose Barb x 90° Elbow Male NPT	7	Female GHT Swivel x Female NPT	28
Hose Barb x 90° Elbow Female NPT	7	Female GHT Swivel x Male NPT	28
Hose Barb x 45° Elbow Male NPT	8	Female GHT Solid x Male NPT	28
Hose Barb x Male 45° SAE Tube OD	8	Female GHT Solid x Female NPT	29
Hose Barb x Female 45° SAE / 37° JIC Tube OD	8	Male GHT x Male GHT	29
Hose Barb x Female 45° SAE Tube OD	9	Male GHT x Male NPT	29
Hose Barb x Female 37° JIC Tube OD	9	Male GHT Solid x Female NPT	30
Hose Barb x Hose Barb Joiner	9	GHT Washers/Gaskets	30
Hose Barb x 90° Elbow Hose Barb Joiner	10	Brass Garden Hose Quick Connectors	30
Hose Barb Tee Joiner	10	Garden Hose Nozzles	31
Welding Hose Fittings	11 - 12	Brass Twist Nozzles	31
Acetylene-Female Left Hand Thread x Hose Barb	11	Brass Plain Nozzle	31
Acetylene-Male Left Hand Thread x Male NPT	11	Brass Sweeper Nozzle	31
Acetylene Hose Connecting Spud, Male Left	11	Flexible Water Nozzles	31
Oxygen-Female Right Hand Thread x Hose Barb	12	Red Polycarbonate Nozzle with Bumper	31
Oxygen-Male Right Hand UNF Thread x Male NPT	12	Green Polycarbonate Nozzle with Bumper	31
Oxygen Hose Connecting Spud, Male Right Hand UNF Thread x Male Right Hand UNF Thread	12	Pistol Grip Nozzle	31
Brass Ferrules & Crimpers	13 - 15	Insulated Grip Nozzle	31
Brass Ferrules For Std Barbed Hose Fittings	13	Garden Hose Accessories	32
Brass Ferrules For Twin Welding Hoses	14	Zinc GHT Goose Neck	32
Manually - Operated Brass Ferrule Crimper	14	Zinc GHT Y Connection	32
Air - Operated Brass Ferrule Crimper	14	Zinc GHT Valve with Easy Handle	32
855 & 855A "Small Diameter Hose" Ferrule	15	Zinc GHT Valve	32
860 "Large Diameter Hose" Ferrule Crimper	15	Brass GHT Y Valve	32
Re-usable Hose Fittings	16 - 18	Brass GHT Valve	32
How to install	16	Zinc GHT Y Valve	32
Re-usable Male NPT Stems with Ferrules	17	Brass GHT 4 Valve Manifold	32
Re-usable Female NPSM Swivel Stems with	18	Brass GHT Hydrant Adapters	32
Push-on Hose Fittings	19 - 25	Threaded Pipe Fittings	33 - 42
270AT- Push-on Hose Assembly Tool	19	Hex Reducer Bushings	33
Push-on Hose Barb x Male NPT	20	Reducer Adapters	33
Push-on Hose Barb x Male NPT - Live Swivel	20	Male Reducing Hex Nipples	34
Push-on Hose Barb x 90° Elbow Male NPT	21	Male Hex Nipples	34
Push-on Hose Barb x Female NPT-Solid	21	Close Pipe Nipples	34
Push-on Hose Barb x Female NPSM Ball Seat	22	Long Pipe Nipples	35
Push-on Hose Barb x Female NPSM Washer Seal	22	Female Hex Couplings	36
Push-on Hose Barb x Male 45° SAE Tube OD	22	Reducer Hex Couplings	36
Push-on Hose Barb x Female 45° SAE Tube OD	23	Threaded Unions	36
Push-on Hose Barb x Male 37° JIC Tube OD	23	Ball Seat Male Unions	37
Push-on Hose Barb x Female 45° SAE / 37° JIC	23	Ball Seat Male x Male NPT	37
Push-on Hose Barb x Female 37° SAE Tube OD	24	Ball Seat Male x Female NPT	37
Push-on Hose Barb x 90° Elbow Female 45° SAE /	24	Female NPSH x Female NPSH Swivel	38
Push-on Hose Barb x Male SAE Inverted Flare	24	Ball Seat Male x Male NPT	38
Push-on Hose Barb x SAE Inverted Flare Female	25	Hex Head Caps	38
Push-on Hose Barb x Rigid Tube Shank	25	Hex Head Plugs	39
Push-on Hose Barb x Push-on Hose Barb Joiner	25	Square Head Plugs	39
		Socket Head Plugs	39

Table of Contents (cont)

Threaded Pipe Fittings (cont)	33 - 42
90° Male Pipe Elbows	40
90° Female Pipe Elbows	40
90° Street Elbows	40
45° Street Elbows	41
Female Tees	41
Male Branch Tees	41
Street Tees	42
Female Pipe Crosses	42
Industry Interchange Chart	43 - 54
Index -By Dixon Part Number	55
Warranty	55

NOTES:

1. Because of the health hazards associated with contamination and lead content in drinking water systems, Dixon couplings, unless otherwise specifically approved, are not recommended for potable water service and should not be used in applications where drinking water will contact the wetted surfaces of the coupling.
2. Some products and sizes may be discontinued when stock is depleted, or may require a minimum quantity for ordering.
3. Reasonable care has been taken in preparing this catalogue. Dixon reserves the right to make corrections and changes.
4. Information in this catalogue is subject to change without notice.
5. All users and distributors of products sold through this catalogue should contact Dixon with questions of use, compatibilities, coupling procedures and life of product.

This catalogue is intended to illustrate the brass & 316 stainless steel, hose barbed inserts, crimp ferrules & tools, and threaded pipe fittings provided by Dixon Group Canada Limited.

For a more in depth product offering, information and technical data, please refer to the current complete Dixon Group Canada Limited catalogue.

Beaded Hose Fittings

- Beaded hose fittings are intended for use with hose clamps.

Male NPT x Beaded Hose Barb



Size		Brass		
Hose I.D.	NPT Thread	Dixon Part #	Standard Part #	Competitor Part #
1/4	1/8	268B0402	268B0402	325-4A / 143-4A / S1125-4A / DS1125-4A
1/4	1/4	268B0404	268B0404	325-4B / 143-4B / S1125-4B
5/16	1/8	268B0502	268B0502	325-5A
5/16	1/4	268B0504	268B0504	325-5B
3/8	1/8	268B0602	268B0602	325-6A / 143-6A
3/8	1/4	268B0604	268B0604	325-6B / 143-6B / S1125-6B
3/8	3/8	268B0606	268B0606	325-6C / 143-6C / S1125-6C / D143-6C
1/2	3/8	268B0806	268B0806	S1125-8C / 143-8C / D143-8C
1/2	1/2	268B0808	268B0808	S1125-8D /
5/8	1/2	268B1008	268B1008	325-10D / D143-10D
3/4	1/2	268B1208	268B1208	325-12D / S1125-12D / D143-12D
3/4	3/4	268B1212	268B1212	S1125-12E

Standard Barbed Hose Fittings

- All standard barbed hose fittings are intended for use with hose clamps or crimped ferrules.

Hose Barb x Male NPT



Size		Brass			Stainless Steel	
Hose I.D.	NPT Thread	Dixon Part #	Standard Part #	Competitor Part #	Dixon Part #	Standard Part #
1/8	1/8	BN11	1020202C	125-2A / D125-2A	RN11	1020202SS
1/8	1/4	BN122	1020204C	125-2B / D125-2B	-	-
3/16	1/8	BN151	1020302C	125-3A / D125-3A	RN151	1020302SS
3/16	1/4	BN152	1020304C	125-3B / D125-3B	RN152	1020304SS
1/4	1/8	BN21	1020402C	125-4A / D125-4A	RN21	1020402SS
1/4	1/4	BN22	1020404C	125-4B / D125-4B	RN22	1020404SS
1/4	3/8	BN23	1020406C	125-4C / D125-4C	RN23	1020406SS
1/4	1/2	BN24	1020408C	125-4D / D125-4D	-	-
5/16	1/8	BN251	1020502C	125-5A / D125-5A	RN251	1020502SS
5/16	1/4	BN252	1020504C	125-5B / D125-5B	RN252	1020504SS
5/16	3/8	BN253	1020506C	125-5C / D125-5C	RN253	1020506SS
3/8	1/8	BN31	1020602C	125-6A / D125-6A	RN31	1020602SS
3/8	1/4	BN32	1020604C	125-6B / D125-6B	RN32	1020604SS
3/8	3/8	BN33	1020606C	125-6C / D125-6C	RN33	1020606SS
3/8	1/2	BN34	1020608C	125-6D / D125-6D	RN34	1020608SS
3/8	3/4	BN36	1020612C	125-6E / D125-6E	-	-
1/2	1/4	BN42	1020804C	125-8B / D125-8B	RN42	1020804SS
1/2	3/8	BN43	1020806C	125-8C / D125-8C	RN43	1020806SS
1/2	1/2	BN44	1020808C	125-8D / 125CA-8D / D125-8D	RN44	1020808SS
1/2	3/4	BN46	1020812C	125-8E / D125-8E	RN46	1020812SS
5/8	3/8	BN53	1021006C	125-10C / D125-10C	RN53	1021006SS
5/8	1/2	BN54	1021008C	125-10D / D125-10D	RN54	1021008SS
5/8	3/4	BN56	1021012C	125-10E / D125-10E	RN56	1021012SS
3/4	1/2	BN64	1021208C	125-12D / D125-12D	RN64	1021208SS
3/4	3/4	BN66	1021212C	125-12E / 125CA-12E / D125-12E	RN66	1021212SS
1	3/4	BN86	1021612C	125-16E / D125-16E	RN86	1021612SS
1	1	BN88	1021616C	125-16H / 125-16F / 125CA-16H / D125-16F	-	-
1 1/4	3/4	BN106	1022012C	-	-	-
1 1/4	1	BN108	1022016C	-	-	-

Hose Barb x Male NPT Live Swivel



Size		Brass		
Hose I.D.	NPT Thread	Dixon Part #	Standard Part #	Competitor Part #
1/4	1/4	103-0404	1030404C	1925-4B / SW125-4B / D125SW-4B
3/8	1/4	103-0604	1030604C	1925-6B / SW125-6B / D125SW-6B
3/8	3/8	103-0606	1030606C	1925-6C / SW125-6C / D125SW-6C
1/2	3/8	103-0806	1030806C	1925-8C / D125SW-8C
1/2	1/2	103-0808	1030808C	1925-8D / SW125-8D / D125SW-8D
3/4	3/4	103-1212	1031212C	D125SW-12E

Standard Barbed Hose Fittings

- All standard barbed hose fittings are intended for use with hose clamps or crimped ferrules.

Hose Barb x Female NPT-Solid



Size		Brass			Stainless Steel	
Hose I.D.	NPT Thread	Dixon Part #	Standard Part #	Competitor Part #	Dixon Part #	Standard Part #
1/8	1/8	BF11	1040202C	126-2A / D126-2A	-	-
1/8	1/4	BF12	1040204C	126-2B / D126-2B	-	-
3/16	1/8	BF151	1040302C	126-3A / D126-3A	-	-
3/16	1/4	BF152	1040304C	126-3B / D126-3B	-	-
1/4	1/8	BF21	1040402C	126-4A / D126-4A	-	-
1/4	1/4	BF22	1040404C	126-4B / D126-4B	RF22	1040404SS
1/4	3/8	BF23	1040406C	126-4C / D126-4C	-	-
1/4	1/2	BF24	1040408C	-	-	-
5/16	1/8	BF251	1040502C	126-5A / D126-5A	-	-
5/16	1/4	BF252	1040504C	126-5B / D126-5B	-	-
5/16	3/8	BF253	1040506C	126-5C / D126-5C	-	-
3/8	1/8	BF31	1040602C	126-6A / D126-6A	-	-
3/8	1/4	BF32	1040604C	126-6B / D126-6B	RF32	1040604SS
3/8	3/8	BF33	1040606C	126-6C / D126-6C	RF33	1040606SS
3/8	1/2	BF34	1040608C	126-6D / D126-6D	-	-
3/8	3/4	BF36	1040612C	-	-	-
1/2	1/4	BF42	1040804C	126-8B / D126-8B	-	-
1/2	3/8	BF43	1040806C	126-8C / D126-8C	-	-
1/2	1/2	BF44	1040808C	126-8D / D126-8D	RF44	1040808SS
1/2	3/4	BF46	1040812C	-	-	-
5/8	3/8	BF53	1041006C	-	-	-
5/8	1/2	BF54	1041008C	-	-	-
5/8	3/4	BF56	1041012C	-	-	-
3/4	1/2	BF64	1041208C	-	-	-
3/4	3/4	BF66	1041212C	126-12E / D126-12E	-	-
1	3/4	BF86	1041612C	126-16E / D126-16E	-	-
1	1	BF88	1041616C	-	-	-
1 1/4	1	BF108	1042016C	-	-	-

Hose Barb x Female NPT Live Swivel



Size		Brass		
Hose I.D.	NPT Thread	Dixon Part #	Standard Part #	Competitor Part #
1/4	1/4	105-0404	1050404C	-
3/8	1/4	105-0604	1050604C	-
3/8	3/8	105-0606	1050606C	-
1/2	3/8	105-0806	1050806C	-
1/2	1/2	105-0808	1050808C	-

Standard Barbed Hose Fittings

- All standard barbed hose fittings are intended for use with hose clamps or crimped ferrules.

Hose Barb x Female NPSM Ball Seat Swivel



Ball Seat threaded fittings can be found on page 37

Size		Brass		
Hose I.D.	NPSM Thread	Dixon Part #	Standard Part #	Competitor Part #
1/8	1/8	BFS11	1240202K	131-2A / D131-2A
3/16	1/8	BFS151	1240302K	131-3A / D131-3A
3/16	1/4	BFS152	1240304K	131-3B / D131-3B
1/4	3/8	BFS21	1240402K	131-4A / D131-4A
1/4	1/4	BFS22	1240404K	131-4B / D131-4B
1/4	3/8	BFS23	1240406K	131-4C / D131-4C
5/16	1/4	BFS252	1240504K	131-5B / D131-5B
5/16	3/8	BFS253	1240506K	-
3/8	1/4	BFS32	1240604K	131-6B / D131-6B
3/8	3/8	BFS33	1240606K	131-6C / D131-6C
3/8	1/2	BFS34	1240608K	131-6D / D131-6D
1/2	3/8	BFS43	1240806K	131-8C / D131-8C
1/2	1/2	BFS44	1240808K	131-8D / D131-8D
3/4	3/4	BFS66	1241212K	131-12E / D131-12E

Hose Barb x Female NPSM Washer Seal Swivel



Size		Brass		
Hose I.D.	NPSM Thread	Dixon Part #	Standard Part #	Competitor Part #
1/8	1/8	126-0202	1260202C	130-2A / D130-2A
3/16	1/8	126-0302	1260302C	130-3A / D130-3A
3/16	1/4	126-0304	1260304C	130-3B / D130-3B
1/4	1/8	126-0402	1260402C	130-4A / D130-4A
1/4	1/4	126-0404	1260404C	130-4B / D130-4B
1/4	3/8	126-0406	1260406C	130-4C / D130-4C
5/16	1/4	126-0504	1260504C	130-5B / D130-5B
3/8	1/4	126-0604	1260604C	130-6B / D130-6B
3/8	3/8	126-0606	1260606C	130-6C / D130-6C
3/8	1/2	126-0608	1260608C	130-6D / D130-6D
1/2	3/8	126-0806	1260806C	130-8C / D130-8C
1/2	1/2	126-0808	1260808C	130-8D / D130-8D
3/4	3/4	126-1212	1261212C	130-12E

Standard Barbed Hose Fittings

- All standard barbed hose fittings are intended for use with hose clamps or crimped ferrules.

Hose Barb x 90° Elbow Male NPT



Size		Brass		
Hose I.D.	NPT Thread	Dixon Part #	Standard Part #	Competitor Part #
3/16	1/8	EL15H1M	1290302C	139-3A / D139-3A
1/4	1/8	EL2H1M	1290402C	139-4A / D139-4A
1/4	1/4	EL2H2M	1290404C	139-4B / D139-4B
1/4	3/8	EL2H3M	1290406C	139-4C / D139-4C
5/16	1/8	EL25H1M	1290502C	139-5A / D139-5A
5/16	1/4	EL25H2M	1290504C	139-5B / D139-5B
5/16	3/8	EL25H3M	1290506C	139-5C
3/8	1/8	EL3H1M	1290602C	139-6A / D139-6A
3/8	1/4	EL3H2M	1290604C	139-6B / D139-6B
3/8	3/8	EL3H3M	1290606C	139-6C / D139-6C
3/8	1/2	EL3H4M	1290608C	139-6D / D139-6D
1/2	1/4	EL4H2M	1290804C	139-8B / D139-8B
1/2	3/8	EL4H3M	1290806C	139-8C / D139-8C
1/2	1/2	EL4H4M	1290808C	139-8D / D139-8D
5/8	3/8	EL5H3M	1291006C	139-10C / D139-10C
5/8	1/2	EL5H4M	1291008C	139-10D / D139-10D
3/4	1/2	EL6H4M	1291208C	139-12D
3/4	3/4	EL6H6M	1291212C	139-12E
1	3/4	EL8H6M	1291612C	139-16E
1	1	EL8H8M	1291616C	-

Hose Barb x 90° Elbow Female NPT



Size		Brass		
Hose I.D.	NPT Thread	Dixon Part #	Standard Part #	Competitor Part #
1/4	1/8	134-0402	1340402C	139F-4A
1/4	1/4	134-0404	1340404C	-
3/8	1/4	134-0604	1340604C	-
3/8	3/8	134-0606	1340606C	-
1/2	1/4	134-0804	1340804C	-
1/2	3/8	134-0806	1340806C	-
1/2	1/2	134-0808	1340808C	-
3/4	3/4	134-1212	1341212C	-

Standard Barbed Hose Fittings

- All standard barbed hose fittings are intended for use with hose clamps or crimped ferrules.

Hose Barb x 45° Elbow Male NPT



Size		Brass		
Hose I.D.	NPT Thread	Dixon Part #	Standard Part #	Competitor Part #
1/4	1/8	139-0402	1390402C	140-4A / D140-4A
1/4	1/4	139-0404	1390404C	140-4B / D140-4B
3/8	1/8	139-0602	1390602C	140-6A / D140-6A
3/8	1/4	139-0604	1390604C	140-6B / D140-6B
1/2	3/8	139-0606	1390606C	140-6C / D140-6C
1/2	1/4	139-0804	1390804C	D140-8B
1/2	3/8	139-0806	1390806C	140-8C
1/2	1/2	139-0808	1390808C	-
3/4	1/2	139-1208	1391208C	-

Hose Barb x Male 45° SAE Tube OD



Size		Brass		
Hose I.D.	Tube OD	Dixon Part #	Standard Part #	Competitor Part #
3/16	1/4	142-0307	1420307C	D127-3X4
1/4	1/4	142-0407	1420407C	127-44 / D127-4X4
1/4	5/16	142-0410	1420410C	127-46 / 127-4X6 / D127-4X6
5/16	5/16	142-0508	1420508C	127-55 / 127-5X5 / D127-5X5
3/8	3/8	142-0610	1420610C	127-66 / 127-6X6 / D127-6X6
3/8	1/2	142-0612	1420612C	127-68 / 127-6X8 / D127-6X8
1/2	1/2	142-0812	1420812C	127-88 / 127-8X8 / D127-8X8

Hose Barb x Female 45° SAE / 37° JIC Tube OD (Dual Angle Seat)



Size		Brass		
Hose I.D.	Tube OD	Dixon Part #	Standard Part #	Competitor Part #
3/16	1/4	143-0307	1430307K	128-34 / 128-3X4 / D128-3X4
1/4	1/4	143-0407	1430407K	128-44 / 128-4X4 / D128-4X4
1/4	5/16	143-0408	1430408K	128-45 / 128-4X5 / D128-4X5
5/16	5/16	143-0508	1430508K	128-55 / 128-5X5 / D128-5X5
3/8	1/2	143-0612	1430612K	128-68 / 128-6X8 / D128-6X8
1/2	1/2	143-0812	1430812K	128-88 / 128-8X8 / D128-8X8
1/2	5/8	143-0814	1430814K	128-810 / 128-8X10 / D128-8X10

Standard Barbed Hose Fittings

- All standard barbed hose fittings are intended for use with hose clamps or crimped ferrules.

Hose Barb x Female 45° SAE Tube OD



Size		Brass		
Hose I.D.	Tube OD	Dixon Part #	Standard Part #	Competitor Part #
3/16	3/16	144-0306	1440306K	-
1/4	3/8	144-0410	1440410K	128-46 / 128-4X6 / D128-4X6
5/16	3/8	144-0510	1440510K	128-56 / 128-5X6 / D128-5X6
3/8	3/8	144-0610	1440610K	128-66 / 128-6X6 / D128-6X6
1/2	1/2	144-0812	1440812K	128-88 / 128-8X8 / D128-8X8
3/4	3/4	144-1217	1441217K	128-1212 / 128-12X12 / D128-12X12

Hose Barb x Female 37° JIC Tube OD



Size		Brass		
Hose I.D.	Tube OD	Dixon Part #	Standard Part #	Competitor Part #
3/8	3/8	145-0609	1450609K	-
3/4	3/4	145-1217	1451217K	-

Hose Barb x Hose Barb Joiner



Size		Brass			Stainless Steel	
Hose I.D.	Hose I.D.	Dixon Part #	Standard Part #	Competitor Part #	Dixon Part #	Standard Part #
1/8	1/8	BM1	1780202C	-	-	-
3/16	3/16	BM15	1780303C	129-3 / D129-3	-	-
1/4	1/8	BM2-1	1780402C	-	-	-
1/4	1/4	BM2	1780404C	129-4 / D129-4	RM2	1780404SS
5/16	5/16	BM25	1780505C	129-5 / D129-5	-	-
3/8	1/4	BM3-2	1780604C	-	-	-
3/8	3/8	BM3	1780606C	129-6 / D129-6	RM3	1780606SS
1/2	3/8	BM4-3	1780806C	-	-	-
1/2	1/2	BM4	1780808C	129-8 / D129-8	RM4	1780808SS
5/8	3/8	BM5-3	1781006C	-	-	-
5/8	5/8	BM5	1781010C	129-10 / D129-10	-	-
3/4	1/2	BM6-4	1781208C	-	-	-
3/4	3/4	BM6	1781212C	129-12 / D129-12	RM6	1781212SS
1	1	BM8	1781616C	129-16	-	-

Standard Barbed Hose Fittings

- All standard barbed hose fittings are intended for use with hose clamps or crimped ferrules.

Hose Barb x 90° Elbow Hose Barb Joiner



Size		Brass		
Hose I.D.	Hose I.D.	Dixon Part #	Standard Part #	Competitor Part #
1/8	1/8	177-0202	1770202C	-
3/16	3/16	177-0303	1770303C	-
1/4	1/8	177-0402	1770402C	-
1/4	1/4	177-0404	1770404C	99HB-4
5/16	5/16	177-0505	1770505C	99HB-5
3/8	1/4	177-0604	1770604C	-
3/8	3/8	177-0606	1770606C	99HB-6
1/2	3/8	177-0806	1770806C	-
1/2	1/2	177-0808	1770808C	99HB-8
5/8	5/8	177-1010	1771010C	-
3/4	1/2	177-1208	1771208C	-
3/4	3/4	177-1212	1771212C	-

Hose Barb Tee Joiner



Size			Brass		
Hose I.D.	Hose I.D.	Hose I.D.	Dixon Part #	Standard Part #	Competitor Part #
1/8	1/8	1/8	179-0202	1790202C	-
3/16	3/16	3/16	179-0303	1790303C	-
1/4	1/4	1/8	179-0402	1790402C	-
1/4	1/4	1/4	179-0404	1790404C	123-4
5/16	5/16	5/16	179-0505	1790505C	123-5
3/8	3/8	1/4	179-0604	1790604C	-
3/8	3/8	3/8	179-0606	1790606C	123-6
1/2	1/2	3/8	179-0806	1790806C	-
1/2	1/2	1/2	179-0808	1790808C	-
5/8	5/8	5/8	179-1010	1791010C	-
3/4	1/2	1/2	179-1208	1791208C	-
3/4	3/4	3/4	179-1212	1791212C	-

Welding Hose Fittings

- All welding hose fittings are intended for use with hose clamps or crimped ferrules.

Acetylene Hose Fitting Female Left Hand UNF Thread x Hose Barb



Size			Brass		
Hose I.D.	Left UNF Thread	Hex	Dixon Part #	Standard Part #	Competitor Part #
3/16	3/8-24	7/16	OA69	1540306K	-
3/16	9/16-18	11/16	OA70	1540309K	133-3L / D133-3L
1/4	9/16-18	11/16	OA71	1540409K	133-4L / D133-4L
5/16	9/16-18	11/16	OA72	1540509K	133-5L / D133-5L
3/8	9/16-18	11/16	OA73	1540609K	133-6L / D133-6L

Acetylene Hose Adapter Male Left Hand UNF Thread x Male NPT



Size			Brass		
Left UNF Thread	Male NPT	Hex	Dixon Part #	Standard Part #	Competitor Part #
9/16-18	1/4	5/8	158-0904	1580904C	135-LB / D135-LB
9/16-18	3/8	11/16	158-0906	1580906C	135-LC / D135-LC

Acetylene Hose Connecting Spud Male Left Hand UNF Thread x Male Left Hand UNF Thread



Intended for joining
2 Acetylene hoses
together

Size			Brass		
Left UNF Thread	Left UNF Thread	Hex	Dixon Part #	Standard Part #	Competitor Part #
9/16-18	9/16-18	11/16	OA52	1580909C	136-L / D136-L

Welding Hose Fittings

- All welding hose fittings are intended for use with hose clamps or crimped ferrules.

Oxygen Hose Fitting Female Right Hand Thread x Hose Barb



Size			Brass		
Hose I.D.	Right UNF Thread	Hex	Dixon Part #	Standard Part #	Competitor Part #
3/16	3/8-24	7/16	OA59	1520306K	-
3/16	9/16-18	11/16	OA60	1520309K	132-3R / D132-3R
1/4	9/16-18	11/16	OA61	1520409K	132-4R / D132-4R
5/16	9/16-18	11/16	OA62	1520509K	132-5R / D132-5R
3/8	9/16-18	11/16	OA63	1520609K	132-6R / D132-6R

Oxygen Hose Adapter Male Right Hand UNF Thread x Male NPT



Size			Brass		
Right UNF Thread	Male NPT	Hex	Dixon Part #	Standard Part #	Competitor Part #
9/16-18	1/4	5/8	156-0904	1560904C	135-RB / D135-RB
9/16-18	3/8	11/16	156-0906	1560906C	135-RC / D135-RC

Oxygen Hose Connecting Spud Male Right Hand UNF Thread x Male Right Hand UNF Thread

Intended for joining
2 Oxygen hoses
together



Size			Brass		
Right UNF Thread	Right UNF Thread	Hex	Dixon Part #	Standard Part #	Competitor Part #
9/16-18	9/16-18	11/16	OA50	1560909C	136-R / D136-R

Brass Ferrules For Standard Barbed Hose Fittings

Dixon Part #	Standard Part #	Pkg Qty	Ferrule ID	Ferrule Length	End Hole Size	Metal Gauge	Ribbed Die*	Plain Die*
BFM478	4750	50	.478"	11/16"	21/64"	.024"	R41	P41/P42
BFM500	7322	50	.500"	1"	11/32"	.024"	R40	P40
BFM525	7323	50	.525"	1"	3/8"	.024"	R39	P39
BFM531	7324	50	.531"	1"	7/16"	.024"	R39	P39
BFM562	7325	50	.561"	1"	7/16"	.024"	R37	P38
BFM593	7326	50	.593"	1"	7/16"	.024"	R36	P37
BFM625	7327	50	.625"	1"	7/16"	.024"	R35	P36
BFM656	7328	50	.656"	1"	7/16"	.024"	R34	P35
BFM687	7329	50	.687"	1"	1/2"	.024"	R33	P34
BFM718	7330	50	.718"	1"	5/8"	.024"	R31	P32
BFM718B	7330B	50	.718"	1"	1/2"	.024"	R31	P32
BFM750	7331	50	.750"	1"	5/8"	.024"	R30	P31
BFM750B	7331B	50	.750"	1"	1/2"	.024"	R30	P31
BFM781	7332	50	.781"	1"	5/8"	.024"	R29	P30
BFM781B	7332B	50	.781"	1"	1/2"	.024"	R29	P30
BFM812	7333	50	.812"	1"	5/8"	.024"	R28	P29
BFL380	622	50	.380"	1/2"	17/64"	.016"	R44	P45
BFL400	619	50	.400"	15/32"	17/64"	.020"	R44	P44
BFL410	620	50	.410"	1/2"	17/64"	.016"	R43	P44
BFL450	769	50	.450"	9/16"	11/32"	.016"	R41	P42
BFL500	624	50	.500"	1/2"	11/32"	.016"	R40	P41
BFL525	625	50	.525"	1/2"	11/32"	.016"	R39	P40
BFL548	626	50	.548"	31/64"	3/8"	.015"	R38	P39
BFL564	3588	50	.564"	3/4"	3/8"	.019"	R37	P38
BFL575	KK	50	.575"	31/64"	15/32"	.019"	R37	P38
BFL600	ii	50	.600"	1/2"	1/2"	.019"	R36	P37
BFL625	II	50	.625"	1/2"	1/2"	.019"	R35	P36
BFL650	HH	50	.650"	1/2"	1/2"	.019"	R34	P35
BFL675	GG	50	.675"	33/64"	1/2"	.019"	R34	P34
BFL725	EE	50	.725"	17/32"	1/2"	.019"	R31	P32
BFL750	DD	50	.750"	17/32"	1/2"	.019"	R30	P32
BFL775	CC	50	.775"	17/32"	1/2"	.016"	R31	P31
BF800	---	25	.800"	.844"	.688"	.024"	R28	P29
BF825	---	25	.825"	.844"	.688"	.024"	R27	P28
BF850	Z	25	.850"	.568"	.688"	.019"	R26	P27
BFW875	7244A	25	.875"	.844"	.688"	.024"	R25	P26
BFW900	5029A	25	.900"	.844"	.688"	.24"	R24	P25
BFW925	7113	25	.925"	.840"	.690"	.25"	R23	P24
BFW975	5028A	25	.975"	.844"	.688"	.024"	R21	P22
BFW1025	7114A	25	1.025"	.844"	.693"	.024"	R19	P20
BFW1175	7088A	25	1.175"	.844"	.875"	.024"	R13	P14
BFMW1050	3605	25	1.050"	.625"	.750"	.025"	R18	P19
BFMW1100	5027	25	1.100"	.843"	.812"	.023"	R16	P17
BFMW1150	7104A	25	1.150"	.844"	.880"	.024"	R15	P15
BFMW1225	875-K	25	1.225"	.875"	.875"	.025"	R11	P12
BFMW1275	875-1	25	1.275"	.875"	1.000"	.025"	R9	P10
BFMW1400	D	25	1.400"	.687"	1.120"	.020"	R4	P5
BFMW1500	1500	25	1.500"	.875"	1.120"	.025"	---	P1



BFM
for medium weight hose



BFL
for light weight hose



BF, BFW & BFMW
for medium weight water
hose

* These Dies are for use with the 5111A & 1765A ferrule crimpers, shown on the following page

Sold in package quantities only

Brass Ferrules & Crimpers

Brass Ferrules For Twin Welding Hoses



Dixon Part #	Standard Part #	Pkg Qty	Ferrule ID	Ferrule Length	Metal Gauge
BFO448	9116	25	.448" x 0.890"	15/32"	.019"
BFO474	9979	25	.474" x 0.943"	15/32"	.019"
BFO535	9940P	25	.535" x 1.071"	3/4"	.024"
BFO593	9593	25	.593" x 1.109"	3/4"	.24"
BFO700	8337	25	.700" x 1.325"	3/4"	.25"

Sold in package quantities only

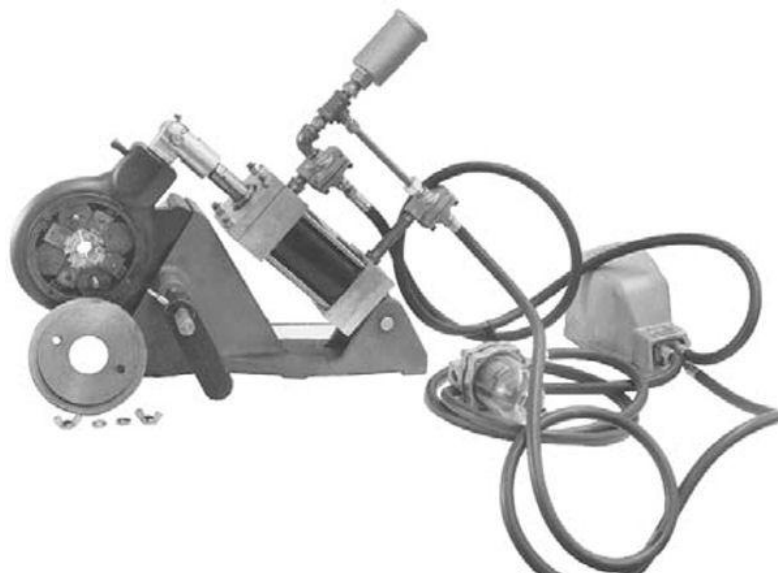
Manually - Operated Brass Ferrule Crimper



- Crimps all brass ferrules shown on previous page
- Does not include dies (die sets are shown on previous page)
- Dies are available with plain or ribbed crimping surface
- Height: with handle upright 27"
- Base: 8" x 3"
- Body: 7-3/8"
- Weight: 25 lbs.

**Dixon Part #
5111A**

Air - Operated Brass Ferrule Crimper



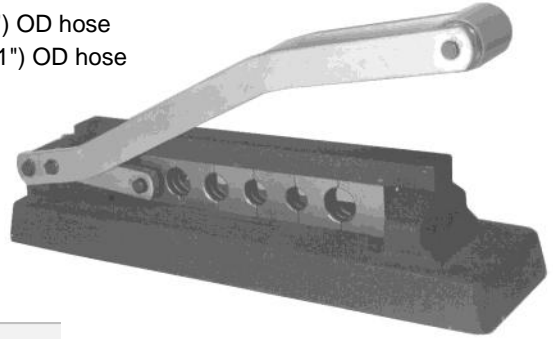
- The mass production assembly of hose, ferrules and fittings is efficiently handled with this air-operated unit.
- The foot pedal permits the use of both hands, reduces fatigue.
- Complete with air cylinder, ferrule machine (less dies), fitted hose lengths and necessary control valves
- Ready for work bench installation Crimps all brass ferrules shown on previous page
- Does not include dies (die sets are shown on previous page)
- Dies are available with plain or ribbed crimping surface
- Weight: 91 lbs.

**Dixon Part #
1765A**

Brass Ferrule Crimpers

855 & 855A "Small Diameter Hose" Ferrule Crimper

- 855 crimper comes with 5 dies for 31/64" (0.484") to 45/64" (0.703") OD hose
- 855A crimper comes with 5 dies for 28/64" (0.437") to 43/64" (0.671") OD hose
- Optional dies up to 52/64" (0.8125") OD hose
- Hose crimper provides "big tool" crimping advantages at a fraction of the cost.
- Rugged, portable and easy to use
- Weight: 10 lbs.



855 & 855A Die Sets						
Die Bore	Hose OD		Dixon Part #	Standard Part #	855 Crimper Dies	855A Crimper Dies
	From:	To				
.375"	.385"	.406"	856-10	200FC3	optional	optional
.437"	.447"	.468"	856-7	-	optional	standard
.484"	.490"	.520"	856-4	200FC4A	standard	standard
.531"	.540"	.562"	856-3	200FC4B	standard	standard
.578"	.590"	.625"	856-2	200FC5	standard	standard
.625"	.640"	.671"	856-1	200FC6A	standard	standard
.687"	.690"	.710"	856-5	200FC6B	standard	optional
.750"	.760"	.781"	856-8	200FC8A	optional	optional
.812"	.820"	.843"	856-9	200FC8B	optional	optional

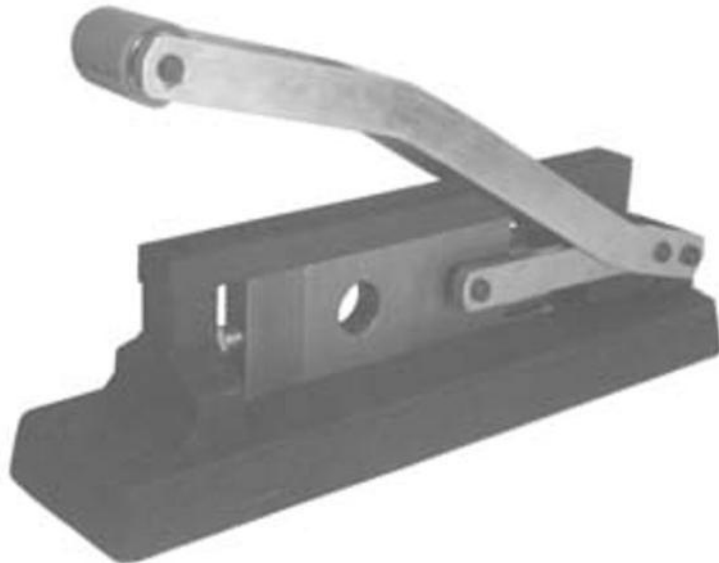
Complete Ferrule Crimper with Dies as shown.
Part #
855
855A

860 "Large Diameter Hose" Ferrule Crimper

- 860 crimper requires the purchase of optional Dies shown below.
- For crimping larger hose sizes normally 1/2" through 1" ID.
- Available dies cover 11/16" to 1 1/2" OD hoses
- Hose crimper provides "big tool" crimping advantages at a fraction of the cost.
- Rugged, portable and easy to use
- Weight: 10 lbs.

Ferrule Crimper (Dies Extra)
Part #
860

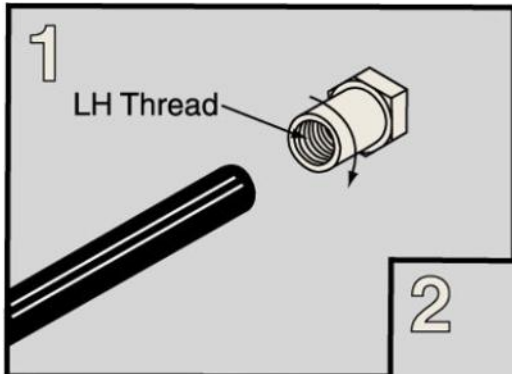
860 Die Sets		
Finished Crimp Size		Dixon Part #
Fraction	Decimal	
11/16	0.6875	861-22
23/32	0.7188	861-23
3/4	0.7500	861-24
25/32	0.7813	861-25
13/16	0.8125	861-26
27/32	0.8438	861-27
7/8	0.8750	861-28
29/32	0.9063	861-29
15/16	0.9275	861-30
31/32	0.9688	861-31
1	1.0000	861-32
1 1/32	1.0313	861-33
1 1/16	1.0625	861-34
1 1/8	1.1250	861-36
1 3/16	1.1875	861-38
1 1/4	1.2500	861-40
1 5/16	1.3125	861-42
1 3/8	1.3750	861-44
1 7/16	1.4375	861-46
1 1/2	1.5000	861-48



Re-usable Hose Fittings

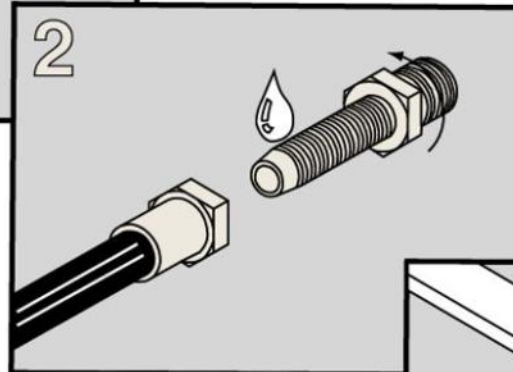
- Re-useable fittings are a heavy duty & durable hose connection, that are often used where making a hose repair is a major consideration.
- Recommended for rubber covered hoses only.
- Available in Brass or 303 Stainless Steel

How to install Re-usable fittings

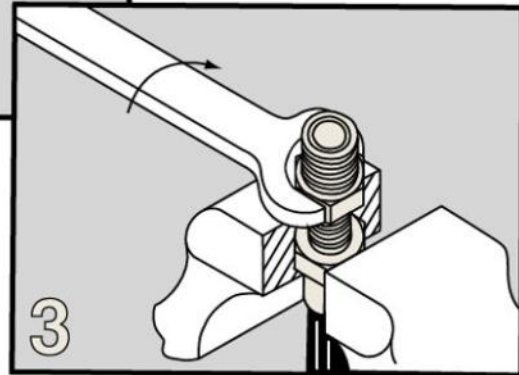


1) Simply slip and twist ferrule on end of hose which has been trimmed flush. No skiving is necessary.

2) Apply a drop or two of "hose friendly" lubricant to stem before inserting into hose.



3) Turn reusable fitting into ferrule. Hose is expanded inside ferrule for tight fit.



Re-usable Hose Joiner, Stems with Ferrules



Size			Brass		
Hose I.D.	Hose O.D.	Hex	Dixon Part #	Standard Part #	Competitor Part #
1/4	1/2	9/16	187-0408	1870408K	-
1/4	9/16	9/16	187-0409	1870409K	-
1/4	5/8	9/16	187-0410	1870410K	-
3/8	5/8	5/8	187-0610	1870610K	-
3/8	11/16	5/8	187-0611	1870611K	-
3/8	3/4	5/8	187-0612	1870612K	-

Re-usable Hose Fittings

Re-usable Male NPT Stems with Ferrules



Size			Brass			Stainless Steel	
Hose I.D.	Hose O.D.	Male NPT	Dixon Part #	Standard Part #	Competitor Part #	Dixon Part #	Standard Part #
1/4	1/2	1/8	BN21RU50	1834082K	-	RN21RU50	1834082KS
1/4	9/16	1/8	BN21RU56	1834092K	-	RN21RU56	1834092KS
1/4	5/8	1/8	BN21RU62	1834102K	-	RN21RU62	1834102KS
1/4	1/2	1/4	BN22RU50	1834084K	-	RN22RU50	1834084KS
1/4	9/16	1/4	BN22RU56	1834094K	-	RN22RU56	1834094KS
1/4	5/8	1/4	BN22RU62	1834104K	-	RN22RU62	1834104KS
1/4	1/2	3/8	BN23RU50	1834086K	-	-	-
1/4	9/16	3/8	BN23RU56	1834096K	-	-	-
1/4	5/8	3/8	BN23RU62	1834106K	-	-	-
5/16	9/16	1/4	BN252RU56	1835094K	-	RN252RU56	1835094KS
5/16	5/8	1/4	BN252RU62	1835104K	-	RN252RU62	1835104KS
5/16	11/16	1/4	BN252RU68	1835114K	-	-	-
5/16	9/16	3/8	BN253RU56	1835096K	-	-	-
5/16	5/8	3/8	BN253RU62	1835106K	-	-	-
5/16	11/16	3/8	BN253RU68	1835116K	-	-	-
3/8	5/8	1/4	BN32RU62	1836104K	-	RN32RU62	1836104KS
3/8	11/16	1/4	BN32RU68	1836114K	-	RN32RU68	1836114KS
3/8	3/4	1/4	BN32RU75	1836124K	-	RN32RU75	1836124KS
3/8	5/8	3/8	BN33RU62	1836106K	-	RN33RU62	1836106KS
3/8	11/16	3/8	BN33RU68	1836116K	-	RN33RU68	1836116KS
3/8	3/4	3/8	BN33RU75	1836126K	-	RN33RU75	1836126KS
3/8	5/8	1/2	BN34RU62	1836108K	-	-	-
3/8	11/16	1/2	BN34RU68	1836118K	-	-	-
3/8	3/4	1/2	BN34RU75	1836128K	-	-	-
1/2	7/8	1/4	BN42RU87	1838144K	-	-	-
1/2	15/16	1/4	BN42RU93	1838154K	-	-	-
1/2	1	1/4	BN42RU99	1838164K	-	-	-
1/2	7/8	3/8	BN43RU87	1838146K	-	RN43RU87	1838146KS
1/2	15/16	3/8	BN43RU93	1838156K	-	RN43RU93	1838156KS
1/2	1	3/8	BN43RU99	1838166K	-	-	-
1/2	7/8	1/2	BN44RU87	1838148K	-	RN44RU87	1838148KS
1/2	15/16	1/2	BN44RU93	1838158K	-	RN44RU93	1838158KS
1/2	1	1/2	BN44RU99	1838168K	-	-	-

Re-usable Hose Fittings

Re-usable Female NPSM Swivel Stems with Ferrules



Size			Brass		
Hose I.D.	Hose O.D.	Female NPSM	Dixon Part #	Standard Part #	Competitor Part #
1/4	1/2	1/4	185-4084	1854084K	-
1/4	9/16	1/4	185-4086	1854086K	-
1/4	5/8	1/4	185-4094	1854094K	-
1/4	1/2	3/8	185-4096	1854096K	-
1/4	9/16	3/8	185-4104	1854104K	-
1/4	5/8	3/8	185-4106	1854106K	-
5/16	9/16	1/4	185-5094	1855094K	-
5/16	5/8	1/4	185-5104	1855104K	-
5/16	11/16	1/4	185-5114	1855114K	-
3/8	5/8	1/4	185-6104	1856104K	-
3/8	11/16	1/4	185-6106	1856106K	-
3/8	3/4	1/4	185-6114	1856114K	-
3/8	5/8	3/8	185-6116	1856116K	-
3/8	11/16	3/8	185-6124	1856124K	-
3/8	3/4	3/8	185-6126	1856126K	-
1/2	7/8	1/2	185-8148	1858148K	-
1/2	15/16	1/2	185-8158	1858158K	-
1/2	1	1/2	185-8168	1858168K	-

Push-on Hose Fittings

Push-on hose fittings are often called "Push-Lock" fittings, and are to be used without a clamp, and only with hose designated for use with Push-on fittings.

Suggested Compatible hoses:

- Eaton Aeroquip: 2556, 2565, 2575, FC647, FS332
- Eaton Weatherhead: H100, H101, H102, H201
- Gates: LOL, Python
- Goodyear Autogrip, Insta-Grip, Ultra-Grip
- Parker Hannifin: 801, 804, 821, 831, 836

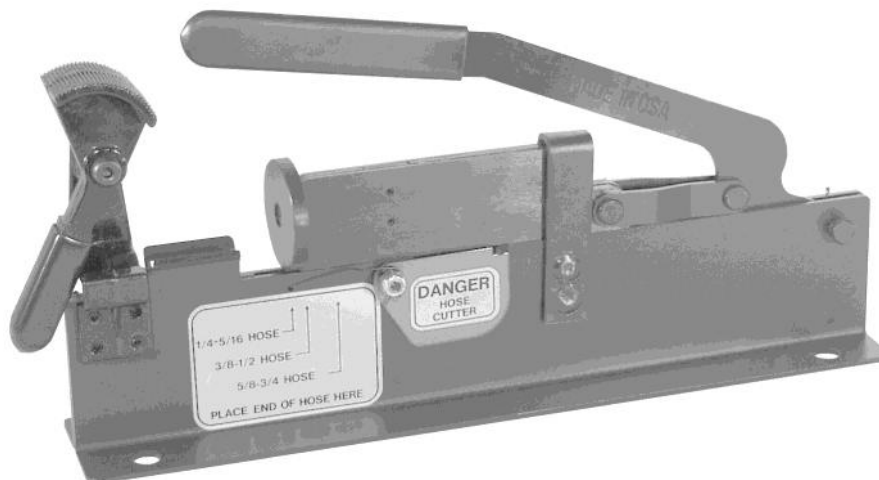
Caution: The hose barbs on Push-on hose fittings must be pushed all the way into the Push-on hose (hose must have a square cut end), with the hose end completely sealed by the plastic cap.

- Available in Brass or 303 Stainless Steel

Assembly Instructions:

- 1) Select hose designated for use with Push-on Fittings.
- 2) Cut hose to desired length, ensuring that the end cuts are square cut.
- 3) Lubricate the fitting barbs, and the inside of the hose using a lubricant that won't damage the hose or application where the assembly is being used.
- 4) **If you have the Dixon 270AT tool shown below, (if not go to step 5) Place the end of the fitting against the flat pusher plate on the tool, insert hose into tool until it starts to engage the fitting, then secure the hose in place with the tool's hose vice. Apply light pressure to the tool handle to drive in the fitting until the end of the hose is covered by the yellow plastic cap**
- 5) **If you don't have the Dixon 270AT tool.** Place the end of the fitting against a flat object (bench, wall, floor etc.). Grip the hose approx 1 inch from the end. Push the hose onto the fitting barbs, using a steady force until the end of the hose is covered by the yellow plastic cap.

270AT- Push-on Hose Assembly Tool



Cuts push-on style hose and inserts the fitting.

- Built-in cutter slices through 1/4" - 3/4" I.D. reinforced push-on hose without fraying.
- Clamp hose into tool's vice and apply light pressure on handle to drive in the fitting
- Tool has four 7/16" diameter mounting holes for bench mounting
- Overall size is 13 1/2" long x 2-3/8" wide x 7" height.
- Instructions are shown above.

Push-on Hose
Assembly Tool

**Part #
270AT**

Push-on Hose Fittings

Push-on hose fittings are often called "Push-Lock" fittings, and are to be used without a clamp, and only with hose designated for use with Push-on fittings.

Push-on Hose Barb x Male NPT



Size		Brass			Stainless Steel	
Hose I.D.	Male NPT	Dixon Part #	Standard Part #	Competitor Part #	Dixon Part #	Standard Part #
1/4	1/8	BPN21	2720402C	725-4A / D362-4A	RPN21	2720402SS
1/4	1/4	BPN22	2720404C	725-4B / D362-4B	RPN22	2720404SS
1/4	3/8	BPN23	2720406C	725-4C / D362-4C	-	-
5/16	1/8	BPN251	2720502C	725-5A / D362-5A	-	-
5/16	1/4	BPN252	2720504C	725-5B / D362-5B	-	-
3/8	1/8	BPN31	2720602C	725-6A / D362-6A	-	-
3/8	1/4	BPN32	2720604C	725-6B / D362-6B	RPN32	2720604SS
3/8	3/8	BPN33	2720606C	725-6C / D362-6C	RPN33	2720606SS
3/8	1/2	BPN34	2720608C	725-6D / D362-6D	-	-
3/8	3/4	BPN36	2720612C	725-6E	-	-
1/2	1/4	BPN42	2720804C	725-8B	-	-
1/2	3/8	BPN43	2720806C	725-8C / D362-8C	RPN43	2720806SS
1/2	1/2	BPN44	2720808C	725-8D / D362-8D	RPN44	2720808SS
1/2	3/4	BPN46	2720812C	725-8E	-	-
5/8	3/8	BPN53	2721006C	725-10C	-	-
5/8	1/2	BPN54	2721008C	725-10D / D362-10D	-	-
5/8	3/4	BPN56	2721012C	725-10E / D362-10E	-	-
3/4	1/2	BPN64	2721208C	725-12D / D362-12D	RPN64	2721208SS
3/4	3/4	BPN66	2721212C	725-12E / D362-12E	RPN66	2721212SS
1	3/4	BPN86	2721612C	-	-	-
1	1	BPN88	2721616C	-	RPN88	2721616SS

Push-on Hose Barb x Male NPT - Live Swivel



Size		Brass		
Hose I.D.	NPT Thread	Dixon Part #	Standard Part #	Competitor Part #
1/4	1/4	271-0404	2710404C	725SW-4B
3/8	1/4	271-0604	2710604C	725SW-6B
3/8	3/8	271-0606	2710606C	725SW-6C
1/2	3/8	271-0806	2710806C	725SW-8C
1/2	1/2	271-0808	2710808C	725SW-8D
3/4	3/4	271-1212	2711212C	725SW-12E

Push-on Hose Fittings

Push-on hose fittings are often called "Push-Lock" fittings, and are to be used without a clamp, and only with hose designated for use with Push-on fittings.

Push-on Hose Barb x 90° Elbow Male NPT



Size		Brass		
Hose I.D.	NPT Thread	Dixon Part #	Standard Part #	Competitor Part #
1/4	1/8	273-0402	2730402C	739-4A
1/4	1/4	273-0404	2730404C	739-4B
3/8	1/8	273-0602	2730602C	739-6A / D369-6A
3/8	1/4	273-0604	2730604C	739-6B
3/8	3/8	273-0606	2730606C	739-6C
1/2	3/8	273-0806	2730806C	739-8C
1/2	1/2	273-0808	2730808C	739-8D
3/4	1/2	273-1208	2731208C	-
3/4	3/4	273-1212	2731212C	739-12E

Push-on Hose Barb x Female NPT-Solid



Size		Brass		
Hose I.D.	NPT Thread	Dixon Part #	Standard Part #	Competitor Part #
1/4	1/8	BPF21	2740402C	726-4A / D361-4A
1/4	1/4	BPF22	2740404C	726-4B / D361-4B
1/4	3/8	BPF23	2740406C	-
5/16	1/8	BPF251	2740502C	-
5/16	1/4	BPF252	2740504C	-
3/8	1/8	BPF31	2740602C	-
3/8	1/4	BPF32	2740604C	726-6B / D361-6B
3/8	3/8	BPF33	2740606C	726-6C / D361-6C
3/8	1/2	BPF34	2740608C	-
3/8	3/4	BPF36	2740612C	-
1/2	1/4	BPF42	2740804C	-
1/2	3/8	BPF43	2740806C	726-8C / D361-8C
1/2	1/2	BPF44	2740808C	726-8D / D361-8D
1/2	3/4	BPF46	2740812C	726-8E
5/8	3/8	BPF53	2741006C	726-10D / D361-10D
5/8	1/2	BPF54	2741008C	-
3/4	1/2	BPF64	2741208C	-
3/4	3/4	BPF66	2741212C	726-12E / D361-12E
1	3/4	BPF86	2741612C	-
1	1	BPF88	2741616C	-

Push-on Hose Fittings

Push-on hose fittings are often called "Push-Lock" fittings, and are to be used without a clamp, and only with hose designated for use with Push-on fittings.

Push-on Hose Barb x Female NPSM Ball Seat Swivel



Size		Brass		
Hose I.D.	NPSM Thread	Dixon Part #	Standard Part #	Competitor Part #
1/4	1/8	BPFS21	2780402C	731-4A
1/4	1/4	BPFS22	2780404C	731-4B
1/4	3/8	BPFS23	2780406C	-
3/8	1/4	BPFS32	2780604C	731-6B
3/8	3/8	BPFS33	2780606C	731-6C
1/2	1/2	BPFS44	2780808C	731-8D
1/2	3/4	BPFS46	2780812C	-
3/4	3/4	BPFS66	2781212C	731-12E

Push-on Hose Barb x Female NPSM Washer Seal Swivel



Size		Brass		
Hose I.D.	NPSM Thread	Dixon Part #	Standard Part #	Competitor Part #
1/4	1/8	280-0402	2800402C	730-4A
1/4	1/4	280-0404	2800404C	730-4B
3/8	1/4	280-0604	2800604C	730-6B
3/8	3/8	280-0606	2800606C	730-6C
3/8	1/2	280-0608	2800608C	-
1/2	1/2	280-0808	2800808C	-
5/8	1/2	280-1008	2801008C	-
3/4	3/4	280-1212	2801212C	-

Push-on Hose Barb x Male 45° SAE Tube OD



Size		Brass		
Hose I.D.	Tube O.D.	Dixon Part #	Standard Part #	Competitor Part #
1/4	1/4	282-0407	2820407C	727-44 / D363-44
1/4	5/16	282-0408	2820408C	727-45 / D363-45
3/8	3/8	282-0610	2820610C	727-66 / D363-66
1/2	1/2	282-0812	2820812C	727-88 / D363-88
5/8	5/8	282-1014	2821014C	727-1010
3/4	3/4	282-1217	2821217C	-

Push-on Hose Fittings

Push-on hose fittings are often called "Push-Lock" fittings, and are to be used without a clamp, and only with hose designated for use with Push-on fittings.

Push-on Hose Barb x Female 45° SAE Tube OD



Size		Brass		
Hose I.D.	Tube O.D.	Dixon Part #	Standard Part #	Competitor Part #
1/4	3/8	284-0410	2840410C	D364-46
5/16	3/8	284-0510	2840510C	D364-56
3/8	3/8	284-0610	2840610C	728-66 / D364-66
3/4	3/4	284-1217	2841217C	728-1212 / D364-1212

Push-on Hose Barb x Male 37° JIC Tube OD



Size		Brass		
Hose I.D.	Tube O.D.	Dixon Part #	Standard Part #	Competitor Part #
1/4	1/4	286-0407	2860407C	737-44 / D371-44
1/4	5/16	286-0408	2860408C	737-45
1/4	3/8	286-0409	2860409C	D371-46
3/8	3/8	286-0609	2860609C	737-66 / D371-66
1/2	1/2	286-0812	2860812C	737-88
5/8	5/8	286-1014	2861014C	-
3/4	3/4	286-1217	2861217C	D371-1212

Push-on Hose Barb x Female 45° SAE / 37° JIC Tube OD (Dual Angle Seat)



Size		Brass			Stainless Steel	
Hose I.D.	Tube O.D.	Dixon Part #	Standard Part #	Competitor Part #	Dixon Part #	Standard Part #
1/4	1/4	287-0407	2870407C	738-44 / 728-44 / D364/5-44	287-0407SS	2870407SS
1/4	5/16	287-0408	2870408C	738-45 / 728-45 / D364/5-45	-	-
3/8	5/16	287-0608	2870608C	-	-	-
3/8	1/2	287-0612	2870612C	728-68 / D364/5-68	-	-
1/2	1/2	287-0812	2870812C	738-88 / 728-88 / D364/5-88	287-0812SS	2870812SS
1/2	5/8	287-0814	2870814C	728-810	-	-
5/8	5/8	287-1014	2871014C	738-1010 / 728-1010 / D364/5-1010	-	-

Push-on Hose Fittings

Push-on hose fittings are often called "Push-Lock" fittings, and are to be used without a clamp, and only with hose designated for use with Push-on fittings.

Push-on Hose Barb x Female 37° SAE Tube OD



Size		Brass			Stainless Steel	
Hose I.D.	Tube O.D.	Dixon Part #	Standard Part #	Competitor Part #	Dixon Part #	Standard Part #
1/4	3/8	288-0409	2880409C	-	-	-
5/16	3/8	288-0509	2880509C	D365-65	-	-
3/8	3/8	288-0609	2880609C	738-66 / D365-66	288-0609SS	2880609SS
1/2	3/8	288-0809	2880809C	-	-	-
3/4	3/4	288-1217	2881217C	738-1212 / D365-1212	288-1217SS	2881217SS
1	1	288-1621	2881621C	-	288-1621SS	2881621SS

Push-on Hose Barb x 90° Elbow Female 45° SAE / 37° JIC Tube OD



Size		Plated Steel		
Hose I.D.	Tube O.D.	Dixon Part #	Standard Part #	Competitor Part #
1/4	1/4	289-0407	2890407C	-
1/4	1/4	289-0407SAE	2890407CSAE	-
3/8	3/8	289-0609	2890609C	-
3/8	3/8	289-0610SAE	2890610CSAE	-
1/2	1/2	289-0812	2890812C	-
1/2	1/2	289-0812SAE	2890812CSAE	-
3/4	3/4	289-1217C	2891217C	-

Push-on Hose Barb x Male SAE Inverted Flare Tube OD



Size		Brass		
Hose I.D.	Tube O.D.	Dixon Part #	Standard Part #	Competitor Part #
1/4	3/16	290-0406	2900406C	735-43 / D367-43
1/4	1/4	290-0407	2900407C	735-44 / D367-44
1/4	5/16	290-0408	2900408C	735-45 / D367-45
5/16	5/16	290-0508	2900508C	D367-55
5/16	3/8	290-0510	2900510C	-
3/8	5/16	290-0608	2900608C	735-65 / D367-65
3/8	3/8	290-0610	2900610C	735-66 / D367-66
1/2	1/2	290-0812	2900812C	735-88 / D367-88
5/8	5/8	290-1014	2901014C	735-1010 / D367-1010

Push-on Hose Fittings

Push-on hose fittings are often called "Push-Lock" fittings, and are to be used without a clamp, and only with hose designated for use with Push-on fittings.

Push-on Hose Barb x SAE Inverted Flare -Rigid Female



Size		Brass		
Hose I.D.	Tube O.D.	Dixon Part #	Standard Part #	Competitor Part #
1/4	3/16	292-0406	2920406C	736-43 / D366-43
1/4	1/4	292-0407	2920407C	736-44 / D366-44
1/4	5/16	292-0408	2920408C	736-45 / D366-45
5/16	5/16	292-0508	2920508C	-
3/8	5/16	292-0608	2920608C	736-65 / D366-65
3/8	3/8	292-0610	2920610C	736-66 / D366-66
1/2	1/2	292-0812	2920812C	736-88 / D366-88

Push-on Hose Barb x Rigid Tube Shank



Size		Brass		
Hose I.D.	Tube O.D.	Dixon Part #	Standard Part #	Competitor Part #
1/4	3/16	294-0403	2940403C	732-43 / D368-43
1/4	1/4	294-0404	2940404C	732-44 / D368-44
1/4	5/16	294-0405	2940405C	732-45 / D368-45
3/8	3/8	294-0606	2940606C	732-66 / D368-66
1/2	1/2	294-0808	2940808C	732-88 / D368-88
5/8	5/8	294-1010	2941010C	732-1010 / D368-1010
3/4	3/4	294-1212	2941212C	-

Push-on Hose Barb x Push-on Hose Barb Joiner



Size		Brass			Stainless Steel	
Hose I.D.	Hose I.D.	Dixon Part #	Standard Part #	Competitor Part #	Dixon Part #	Standard Part #
1/4	1/4	BPM2	2960404C	729-4 / D379-44	SSPM2	2960404SS
5/16	5/16	BPM25	2960505C	729-5 / D379-55	-	-
3/8	3/8	BPM3	2960606C	729-6 / D379-66	SSPM3	2960606SS
1/2	1/2	BPM4	2960808C	729-8 / D379-88	SSPM4	2960808SS
5/8	5/8	BPM5	2961010C	729-10 / D379-1010	-	-
3/4	3/4	BPM6	2961212C	729-12 / D379-1212	-	-
1	1	BPM8	2961616C	-	-	-

Heavy Duty, Garden Hose Fittings

- Garden hose fittings utilize a coarse thread, often referred to as “GHT”.
- Medium Length Barbed GHT hose fittings are intended for use with hose clamps or crimped ferrules.

Sets- GHT Swivel Nut x Medium Length Hose Insert

Hose Barb Insert Lengths

- 3/8 –3/4” sizes 1.19”
- 1” size 1.44”



Size		Brass			Stainless Steel	
Hose I.D.	Thread	Dixon Part #	Standard Part #	Competitor Part #	Dixon Part #	Standard Part #
3/8	3/4 FxM GHT Swivel	BC73	5920606K	193-195H-6 / 193-195-6	-	-
1/2	3/4 FxM GHT Swivel	BC74	5920808K	193-195H-8 / 193-195HL-8 / 193-195-8	SSC74	5920808SS
5/8	3/4 FxM GHT Swivel	BC75	5921010K	193-195H-10 / 193-195HL-10 / 193-195-10	SSC75	5921010SS
3/4	3/4 FxM GHT Swivel	BC76	5921212K	193-195H-12 / 193-195HL-12 / 193-195-12	SSC76	5921212SS
1	3/4 FxM GHT Swivel	BC78	5921612K	193-195H-16 / 193-195HL-16 / 193-195-16	-	-

Female- GHT Swivel Nut x Medium Length Hose Insert

Hose Barb Insert Lengths

- 3/8 –3/4” sizes 1.19”
- 1” size 1.44”



Size		Brass			Stainless Steel	
Hose I.D.	Thread	Dixon Part #	Standard Part #	Competitor Part #	Dixon Part #	Standard Part #
3/8	3/4 F GHT Swivel	BCF73	5910612C	195-6 / D195-6	-	-
1/2	3/4 F GHT Swivel	BCF74	5910812C	195-8 / 195L-8 / D195-8 / D195L-8	SSCF74	5910812SS
5/8	3/4 F GHT Swivel	BCF75	5911012C	195-10 / 195L-10 / D195-10 / D195L-10	SSCF75	5911012SS
3/4	3/4 F GHT Swivel	BCF76	5911212C	195-12 / 195L-12 / D195-12 / D195L-12	SSCF76	5911212SS
1	3/4 F GHT Swivel	BCF78	5911612C	-	-	-

Male- GHT x Medium Length Hose Insert

Hose Barb Insert Lengths

- 3/8 –3/4” sizes 1.19”
- 1” size 1.44”



Size		Brass			Stainless Steel	
Hose I.D.	Thread	Dixon Part #	Standard Part #	Competitor Part #	Dixon Part #	Standard Part #
3/8	3/4 MGHT	BCM73	5900612C	193-6 / D193-6	-	-
1/2	3/4 MGHT	BCM74	5900812C	193-8 / 193L-8 / D193-8 / D193L-8	SSCM74	5900812SS
5/8	3/4 MGHT	BCM75	5901012C	193-10 / 193L-10 / D193-10 / D193L-10	SSCM75	5901012SS
3/4	3/4 MGHT	BCM76	5901212C	193-12 / 193L-12 / D193-12 / D193L-12	SSCM76	5901212SS
1	3/4 MGHT	BCM78	5901612C	-	-	-

Heavy Duty, Garden Hose Fittings

- Garden hose fittings utilize a coarse thread, often referred to as “GHT”.
- Long Shank Barbed GHT hose fittings are intended for use with hose clamps

Sets- GHT Swivel Nut x Long Hose Insert



Hose Barb Insert Lengths

- All sizes 2.03”

Size		Brass	
Hose I.D.	Thread	Dixon Part #	Standard Part #
1/2	3/4 FxM GHT Swivel	BLS407	5950808K
5/8	3/4 FxM GHT Swivel	BLS507	5951010K
3/4	3/4 FxM GHT Swivel	BLS607	5951212K
1	1" FxM NPS Swivel	BLS808	5951616K

Female- GHT Swivel Nut x Long Hose Insert



Hose Barb Insert Lengths

- All sizes 2.03”

Size		Brass	
Hose I.D.	Thread	Dixon Part #	Standard Part #
1/2	3/4 F GHT Swivel	BLS447	5940812C
5/8	3/4 F GHT Swivel	BLS547	5941012C
3/4	3/4 F GHT Swivel	BLS647	5941212C
1	1" F NPS Swivel	BLS848	5941616C

Male- GHT x Long Hose Insert



Hose Barb Insert Lengths

- All sizes 2.03”

Size		Brass	
Hose I.D.	Thread	Dixon Part #	Standard Part #
1/2	3/4 MGHT	BLS417	5930812C
5/8	3/4 MGHT	BLS517	5931012C
3/4	3/4 MGHT	BLS617	5931212C
1	1" MNPS	BLS818	5931616C

Heavy Duty, Garden Hose Thread Adapters

- Garden hose fittings utilize a coarse thread, often referred to as "GHT".

Female GHT x GHT Swivel



Size	Brass		
Female GHT X Female GHT	Dixon Part # BA977	Standard Part # 5061212C	Competitor Part # 203-W / D203-W

GHT Caps



Size	Brass		
Female GHT Cap	Dixon Part # GHC7	Standard Part # 5131212C	Competitor Part # 200-W / D200-W

Female GHT Swivel x Female NPT



Size		Brass			Stainless Steel	
Female NPT	Female GHT	Dixon Part #	Standard Part #	Competitor Part #	Dixon Part #	Standard Part #
1/2	3/4 F GHT Swivel	BAS974	5021208C	199S-D / D199S-D	RAS974	5021208SS
3/4	3/4 F GHT Swivel	BAS976	5021212C	199S-E / D199S-E	RAS976	5021212SS

Female GHT Swivel x Male NPT



Size		Brass			Stainless Steel	
Male NPT	Female GHT	Dixon Part #	Standard Part #	Competitor Part #	Dixon Part #	Standard Part #
1/4	3/4 F GHT Swivel	504-1204	5041204C	194-B / D194-B	-	-
3/8	3/4 F GHT Swivel	504-1206	5041206C	194-C / D194-C	-	-
1/2	3/4 F GHT Swivel	504-1208	5041208C	194-D / D194-D	R504-1208	5041208SS
3/4	3/4 F GHT Swivel	504-1212	5041212C	-	R504-1212	5041212SS

Female GHT Solid x Male NPT



Size		Brass			Stainless Steel	
Male NPT	Female GHT	Dixon Part #	Standard Part #	Competitor Part #	Dixon Part #	Standard Part #
3/8	3/4 F GHT Solid	BMA973	5031206C	199-C	-	-
1/2	3/4 F GHT Solid	BMA974	5031208C	199-D / D199-D	RMA974	5031208SS
3/4	3/4 F GHT Solid	BMA976	5031212C	199-E / D199-E	RMA976	5031212SS

Heavy Duty, Garden Hose Thread Adapters

- Garden hose fittings utilize a coarse thread, often referred to as "GHT".

Female GHT Solid x Female NPT



Size		Brass			Stainless Steel	
Female NPT	Female GHT	Dixon Part #	Standard Part #	Competitor Part #	Dixon Part #	Standard Part #
1/8	3/4 F GHT Solid	BA971	5011202C	-	-	-
1/4	3/4 F GHT Solid	BA972	5011204C	198-B / D198-B	-	-
3/8	3/4 F GHT Solid	BA973	5011206C	198-C / D198-C	-	-
1/2	3/4 F GHT Solid	BA974	5011208C	198-D / D198-D	RA974	5011208SS
3/4	3/4 F GHT Solid	BA976	5011212C	198-E / D198-E	RA976	5011212SS

Male GHT x Male GHT



Size		Brass			Stainless Steel	
Male	Male GHT	Dixon Part #	Standard Part #	Competitor Part #	Dixon Part #	Standard Part #
3/4 GHT	3/4 MGHT Solid	BA777	5091212C	196-W / D196-W	RA777	5091212SS
1 NPS	3/4 MGHT Solid	509-1612	5091612C	-	-	-

Male GHT x Male NPT



Size		Brass			Stainless Steel	
Female NPT	Male GHT	Dixon Part #	Standard Part #	Competitor Part #	Dixon Part #	Standard Part #
3/8	3/4 MGHT Solid	BA73	5081206C	196-C / D196-C	-	-
1/2	3/4 MGHT Solid	BA74	5081208C	196-D / D196-D	RA74	5081208SS
3/4	3/4 MGHT Solid	BA776*	5141212C	196-E / D196-E	RA776	5081212SS
1	3/4 MGHT Solid	BA78	5011216C	-	-	-

*BA776 also has 1/2" Female NPT on the ID of the 3/4" male NPT.

Heavy Duty, Garden Hose Thread Adapters

- Garden hose fittings utilize a coarse thread, often referred to as "GHT".

Male GHT Solid x Female NPT



Size		Brass			Stainless Steel	
Female NPT	Male GHT	Dixon Part #	Standard Part #	Competitor Part #	Dixon Part #	Standard Part #
1/4	3/4 M GHT Solid	507-1204	5071204C	197-B / D197-B	-	-
3/8	3/4 M GHT Solid	507-1206	5071206C	197-C / D197-C	-	-
1/2	3/4 M GHT Solid	BA794	5071208C	197-D / D197-D	RA794	5071208SS
3/4	3/4 M GHT Solid	BA796	5071212C	197-E / D197-E	RA796	5071212SS

GHT Washers/Gaskets



Red Vinyl



White Rubber



Black Vinyl with SS Screen

Material	Dixon Part #	Standard Part #	Competitor Part #
Red Vinyl	TVW7	-	GHW-FLAT / GHW-12 / GHW
White Rubber	TRW7	-	GHW-12R / D204-12
FDA Approved Black Vinyl, with 6050 304SS Mesh Screen	TVS7-30	-	-

Brass Garden Hose Quick Connectors



DGH7C



DGH7P

Description	Dixon Part #	Standard Part #	Competitor Part #
Complete Set - Unvalved Coupler & Unvalved Plug	DGH7	500QCK	-
Complete Set - Valved Coupler & Unvalved Plug	DGH7CV	500QCFV	QD-BVGHC12-12F / QD-WHV/CF
Male GHT Unvalved Plug	DGH7P	500QCM	QD-BGHN12-12M / QD-WHNM
Female GHT Unvalved Coupler	DGH7C	500QCF	QD-BGHC12-12F / QD-WHCF
Female GHT Valved Coupler, (Valved for water shutoff when disconnected)	DGH7V	500QCKV	-
Replacement Coupler Gasket	DGHW7	5911212W	-

Garden Hose Nozzles

- Garden hose fittings utilize a coarse thread, often referred to as "GHT".

Brass Twist Nozzles



Description	Dixon Part #
3/4 GHT 4" long North American produced	BTN75
3/4 GHT 4" long globally produced	500AN4
3/4 GHT 7" long globally produced	500-AN7

Brass Plain Nozzle



Description	Dixon Part #
3/4 GHT 6" long 1/4" discharge hole	BN6

Brass Sweeper Nozzle



Description	Dixon Part #
3/4 GHT 2" long 3/16" discharge hole	PSN76

Flexible Water Nozzles



Description	Dixon Part #
3/4 GHT bend for water flow, shuts off when released.	8005

Red Polycarbonate Nozzle with Bumper



Description	Dixon Part #
3/4 GHT Red Polycarbonate with Brass stem, adjusts straight stream to fog	FNB75GHT

*Flow rate: 76 L/min @ solid stream, 95 L/min @ 45° spray, 117 L/min @ 120° spray
100 PSI Water at 21°C*

Green Polycarbonate Nozzle with Bumper



Description	Dixon Part #
3/4 GHT Green Polycarbonate with steel stem. Constant flow,	GNB75GHT

Flow rate: 95 L/min @ 45° spray, 100 PSI Water at 21°C

Pistol Grip Nozzle

- Zinc body with rubber handle guard
- Heavy duty brass valve and nut.



Description	Dixon Part #
3/4 GHT	CSN75

Insulated Grip Nozzle

- Chrome plated zinc body with Nylon heat guard and handle.
- Heavy duty brass valve and nut.
- Hot water up to 82°C



Description	Dixon Part #
3/4 GHT	SN75
3/4 NPT	SN75NPT

Heavy Duty Garden Accessories

- Garden hose fittings utilize a coarse thread, often referred to as "GHT".

Zinc GHT Goose Neck



- 125 PSI at 21°C

Description	Dixon Part #
Powder coated zinc gooseneck	GHGN

Zinc GHT Y Connection



- 150 PSI at 71°C
- Includes one thread cap

Description	Dixon Part #
Powder coated zinc twin outlet	GHY

Zinc GHT Valve with Easy Handle



- 150 PSI at 71°C

Description	Dixon Part #
Powder coated zinc shut off valve	GHVEZK

Zinc GHT Valve



- 150 PSI at 71°C

Description	Dixon Part #
Powder coated zinc shut off valve	GHV

Brass GHT Y Valve



- Swivel inlet
- Stainless steel balls
- Teflon seats

Description	Dixon Part #
Forged brass y connection with twin shut off valves	500GHY

Brass GHT Valve



- Stainless steel ball
- Teflon seat

Description	Dixon Part #
Forged brass shut off valve	500GHV

Zinc GHT Y Valve



- 150 PSI at 71°C

Description	Dixon Part #
Powder coated zinc y connection with twin shut off valves	GHYV

Brass GHT 4 Valve Manifold



- Swivel inlet
- Stainless steel balls
- Teflon seats

Description	Dixon Part #
Forged brass 4 outlets with shut off valves	500-GH4V

Brass GHT Hydrant Adapters



Female Fire Thread	Male GHT	Dixon Part #
2 1/2 NST	3/4 MGHT	HA2576
2 1/2 BA	3/4 MGHT	HA25BA76
2 1/2 WCT	3/4 MGHT	HA25WCT76
2 1/2 CSA	3/4 MGHT	HA25CSA76
2 1/2 QST	3/4 MGHT	HA25QST76

Threaded Pipe Fittings

Hex Reducer Bushings



For larger sizes and other materials, please refer to page 715 of Catalogue "DGCL2011"

Size		125# Brass			150# Stainless Steel
Female NPT	Male NPT	Dixon Part #	Standard Part #	Competitor Part #	Dixon Part #
1/8	1/4	HB1F2M	3730402C	110-BA / D110-BA / DC110-BA	HB2518SS
1/8	3/8	HB1F3M	3730602C	110-CA / D110-CA / DC110-CA	-
1/8	1/2	HB1F4M	3730802C	110-CB / D110-CB / DC110-CB	-
1/8	3/4	HB1F6M	3731202C	110-DA / D110-DA / DC110-DA	-
1/4	3/8	HB2F3M	3730604C	110-DB / D110-DB / DC110-DB	HB3825SS
1/4	1/2	HB2F4M	3730804C	110-DC / D110-DC / DC110-DC	HB5025SS
1/4	3/4	HB2F6M	3731204C	110-EA / D110-EA / DC110-EA	HB7525SS
1/4	1	HB2F8M	3731604C	110-EB / D110-EB / DC110-EB	HB1025SS
3/8	1/2	HB3F4M	3730806C	110-EC / D110-EC / DC110-EC	HB5038SS
3/8	3/4	HB3F6M	3731206C	110-ED / 110CA-ED / D110-ED / DC110-ED	HB7538SS
3/8	1	HB3F8M	3731606C	110-HB / 110-FB / 110CA-HB / D110-FB / DC110-FB	HB1038SS
1/2	3/4	HB4F6M	3731208C	110-HC / 110-FC / 110CA-HC / D110-FC / DC110-FC	HB7550SS
1/2	1	HB4F8M	3731608C	110-HD / 110-FD / 110CA-HD / D110-FD / DC110-FD	HB1050SS
3/4	1	HB6F8M	3731612C	110-HE / 110-FE / 110CA-HE / D110-FE / DC110-FE	HB1075SS

Reducer Adapters



Size		125# Brass		
Female NPT	Male NPT	Dixon Part #	Standard Part #	Competitor Part #
1/8	1/8	RA1F1M	3750202C	120-AA / D120-AA
1/4	1/8	RA2F1M	3750402C	120-BA / D120-BA
1/4	1/4	RA2F2M	3750404C	120-BB / D120-BB
3/8	1/8	RA3F1M	3750602C	120-CA / D120-CA
3/8	1/4	RA3F2M	3750604C	120-CB / D120-CB
3/8	3/8	RA3F3M	3750606C	120-CC / D120-CC / DC120-CC
1/2	1/4	RA4F2M	3750804C	120-DB / D120-DB
1/2	3/8	RA4F3M	3750806C	120-DC / D120-DC
1/2	1/2	RA4F4M	3750808C	120-DD / D120-DD / DC120-DD
3/4	3/8	RA6F3M	3751206C	120-EC
3/4	1/2	RA6F4M	3751208C	120-ED / D120-ED
3/4	3/4	RA6F6M	3751212C	120-EE / DC120-EE

Threaded Pipe Fittings

Male Reducing Hex Nipples



Male NPT	Male NPT	Dixon Part #	Standard Part #	Competitor Part #	Dixon Part #
1/4	1/8	HN2M1M	3790402C	122-BA / D122-BA	-
3/8	1/8	HN3M1M	3790602C	122-CA / D122-CA	-
3/8	1/4	HN3M2M	3790604C	122-CB / D122-CB	RHN3825SS
1/2	1/4	HN4M2M	3790804C	122-DB / D122-DB	-
1/2	3/8	HN4M3M	3790806C	122-DC / D122-DC	RHN5038SS
3/4	1/2	HN6M4M	3791208C	122-ED / D122-ED	-

Male Hex Nipples



Size		125# Brass			150# Stainless Steel
Male NPT	Male NPT	Dixon Part #	Standard Part #	Competitor Part #	Dixon Part #
1/8	1/8	BCN12	3700202C	122-A / D122-A	-
1/4	1/4	BCN25	3700404C	122-B / D122-B	-
3/8	3/8	BCN37	3700606C	122-C / D122-C	HN38SS
1/2	1/2	BCN50	3700808C	122-D / D122-D	HN50SS
3/4	3/4	BCN75	3701212C	122-E / D122-E	HN75SS
1	1	BCN100	3701616C	122-H / 122-F / D122-F	HN100SS

Close Pipe Nipples

For larger sizes and other materials, please refer to page 728 of Catalogue "DGCL2011"



Size		125# Brass			150# Stainless Steel
Male NPT	Length	Dixon Part #	Standard Part #	Competitor Part #	Dixon Part #
1/8	3/4	165-0202	1650202C	112-A / D112-A	CN012SS
1/4	11/16	165-0404	1650404C	112-B / D112-B	CN025SS
3/8	1	165-0606	1650606C	112-C / D112-C	CN037SS
1/2	1 1/8	165-0808	1650808C	112-D / D112-D	CN050SS
3/4	1 1/3	165-1212	1651212C	112-E / D112-E	CN075SS
1	1 1/2	165-1616	1651616C	112-H / 112-F	CN100SS

Threaded Pipe Fittings

Long Pipe Nipples



For larger sizes and other materials, please refer to page 729 of Catalogue "DGCL2011"

Size		125# Brass		
Male NPT	Length	Dixon Part #	Standard Part #	Competitor Part #
1/8	1 1/2	166-0215	1660215C	113-A1 1/2 / D113-A1 1/2
1/8	2	166-0220	1660220C	113-A2 / D113-A2
1/8	2 1/2	166-0225	1660225C	113-A2 1/2 / D113-A2 1/2
1/8	3	166-0230	1660230C	113-A3 / D113-A3
1/8	3 1/2	166-0235	1660235C	113-A3 1/2
1/8	4	166-0240	1660240C	113-A4
1/4	1 1/2	166-0415	1660415C	113-B1 1/2 / D113-B1 1/2
1/4	2	166-0420	1660420C	113-B2 / D113-B2
1/4	2 1/2	166-0425	1660425C	113-B2 1/2 / D113-B2 1/2
1/4	3	166-0430	1660430C	113-B3
1/4	3 1/2	166-0435	1660435C	113-B3 1/2
1/4	4	166-0440	1660440C	113-B4
1/4	4 1/2	166-0450	1660450C	113-B5
3/8	1 1/2	166-0615	1660615C	113-C2 / D113-C2
3/8	2	166-0620	1660620C	113-C2 1/2 / D113-C2 1/2
3/8	2 1/2	166-0625	1660625C	113-C3 / D113-C3
3/8	3	166-0630	1660630C	113-C3 1/2
3/8	3 1/2	166-0635	1660635C	113-C4
3/8	4	166-0640	1660640C	113-C1 1/2
1/2	1 1/2	166-0815	1660815C	113-D1 1/2 / D113-D1 1/2
1/2	2	166-0820	1660820C	113-D2 / D113-D2
1/2	2 1/2	166-0825	1660825C	113-D2 1/2 / D113-D2 1/2
1/2	3	166-0830	1660830C	113-D3
1/2	3 1/2	166-0835	1660835C	113-D3 1/2
1/2	4	166-0840	1660840C	113-E1 1/2
3/4	2	166-1220	1661220C	113-E2
3/4	2 1/2	166-1225	1661225C	113-E2 1/2
3/4	3	166-1230	1661230C	113-E3
3/4	3 1/2	166-1235	1661235C	113-E3 1/2
1	2	TN100X2B	-	113-H2
1	3	TN100X3B	-	113-H3
1	4	TN100X4B	-	113-H4
1 1/2	2	TN150X2B	-	113-K2
1 1/2	3	TN150X3B	-	113-K3
2	3	TN200X3B	-	113-M3
2	4	TN200X4B	-	113-M4
2	6	TN200X6B	-	113-M6

Threaded Pipe Fittings

Female Hex Couplings

For larger sizes and other materials, please refer to page 717 of Catalogue "DGCL2011"



Size		125# Brass			150# Stainless Steel
Female NPT	Female NPT	Dixon Part #	Standard Part #	Competitor Part #	Dixon Part #
1/8	1/8	BA1F1F	3710202C	103-A / D103-A / DF103-A / DC103-A	-
1/4	1/4	BA2F2F	3710404C	103-B / D103-B / DF103-B / DC103-B	RHC25SS
3/8	3/8	BA3F3F	3710606C	103-C / D103-C / DF103-C / DC103-C	RHC38SS
1/2	1/2	BA4F4F	3710808C	103-D / 103CA-D / D103-D / DF103-D / DC103-D	RHC50SS
3/4	3/4	BA6F6F	3711212C	103-E / 103CA-E / D103-E / DF103-E / DC103-E	RHC75SS

Reducer Hex Couplings

For larger sizes and other materials, please refer to page 716 of Catalogue "DGCL2011"



Size		125# Brass			150# Stainless Steel
Female NPT	Female NPT	Dixon Part #	Standard Part #	Competitor Part #	Dixon Part #
1/4	1/8	RC2F1F	3770402C	119-BA / D119-BA / DC119-BA	-
3/8	1/8	RC3F1F	3770602C	119-CA / D119-CA / DC119-CA	-
3/8	1/4	RC3F2F	3770604C	119-CB / D119-CB / DC119-CB	BR3825SS
1/2	1/4	RC4F2F	3770804C	119-DB / D119-DB / DC119-DB	BR5025SS
1/2	3/8	RC4F3F	3770806C	119-DC / D119-DC / DC119-DC	BR5038SS
3/4	3/8	RC6F3F	3771206C	119-EC / D119-EC / DC119-EC	BR7538SS
3/4	1/2	RC6F4F	3771208C	119-ED / D119-ED / DC119-ED	BR7550SS

Threaded Unions

For larger sizes and other materials, please refer to page 716 of Catalogue "DGCL2011"



Size		125# Brass			150# Stainless Steel
Female NPT	Female NPT	Dixon Part #	Standard Part #	Competitor Part #	Dixon Part #
1/4	1/4	TUN2F	-	104-B / D104-B / DC104-B	TUN025SS
3/8	3/8	TUN3F	-	104-C / D104-C / DC104-C	-
1/2	1/2	TUN4F	-	104-D / D104-D / DC104-D	TUN050SS
3/4	3/4	TUN5F	-	104-E / D104-E / DC104-E	TUN075SS
1	1	TUN6F	-	104-H / DC104-F	TUN100SS

Threaded Pipe Fittings

Ball Seat Male Unions



Size		125# Brass		
Male NPSM	Male NPSM	Dixon Part #	Standard Part #	Competitor Part #
1/8	1/8	176-0202	1760202C	-
1/4	1/4	176-0404	1760404C	134-ST-BB / D134-ST-BB
3/8	3/8	176-0606	1760606C	134-ST-CC / D134-ST-CC
1/2	1/2	176-0808	1760808C	-

Ball Seat Male x Male NPT



Size		125# Brass		
Male NPSM	Male NPT	Dixon Part #	Standard Part #	Competitor Part #
1/8	1/8	BSM11	1720202C	-
1/4	1/8	BSM21	1720402C	134-BA / D134-BA
1/4	1/4	BSM22	1720404C	134-BB / D134-BB
3/8	1/4	BSM32	1720604C	134-CB / 134-BC / D134-CB
3/8	3/8	BSM33	1720606C	134-CC / D134-CC
3/8	1/2	BSM34	1720608C	134-CD / D134-CD
1/2	3/8	BSM43	1720806C	134-DC / D134-DC
1/2	1/2	BSM44	1720808C	134-DD / D134-DD
3/4	3/4	BSM66	1721212C	134-EE / D134-EE

Ball Seat Male x Female NPT



Size		125# Brass		
Male NPSM	Male NPT	Dixon Part #	Standard Part #	Competitor Part #
1/4	1/4	174-0404	1740404C	-
3/8	3/8	174-0606	1740606C	-
1/2	1/2	174-0808	1740808C	-

Hose Barb x Ball Seat fittings can be found on page 6

Threaded Pipe Fittings

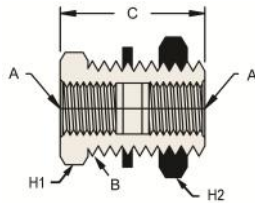
Female NPSH x Female NPSH Swivel



Size		125# Brass		
Female NPSH	Female NPSH	Dixon Part #	Standard Part #	Competitor Part #
1"	1"	BA 1616	-	-

Ball Seat Male x Male NPT

For larger sizes and other materials, please refer to page 727 of Catalogue "DGCL2011"



Size		125# Brass				
"A" Female NPT (both ends)	Dixon Part #	Standard Part #	"B" UNS Straight Thread	"C" Length	"H1" Length	"H2" Length
1/8	207-BH2	207BH2	5/8-18	1.50	7/8	15/16
1/4	207-BH4	207BH4	3/4-16	1.50	1	1
1/4	207-BH4S	207BH4S	3/4-16	0.94	1	1
3/8	207-BH6	207BH6	1-14	1.31	1 1/8	1 1/4
1/2	207-BH8	207BH8	1 1/8-14	1.50	1 1/4	1 3/8
3/4	207-BH12	207BH12	1 5/16-12	1.50	1 1/2	1 1/2

Hex Head Caps

For larger sizes and other materials, please refer to page 721 of Catalogue "DGCL2011"



Size		125# Brass	
Female NPT	Dixon Part #	Standard Part #	Competitor Part #
1/8	213-0200	2130200C	108-A / D108-A
1/4	213-0400	2130400C	108-B / D108-B
3/8	213-0600	2130600C	108-C / D108-C
1/2	213-0800	2130800C	108-D / D108-D
3/4	213-1200	2131200C	108-E / D108-E

Threaded Pipe Fittings

Hex Head Plugs



Size	125# Brass		
Male NPT	Dixon Part #	Standard Part #	Competitor Part #
1/8	HHP1M	1630200C	121-A / D121-A
1/4	HHP2M	1630400C	121-B / D121-B
3/8	HHP3M	1630600C	121-C / D121-C
1/2	HHP4M	1630800C	121-D / D121-D
3/4	HHP6M	1631200C	121-E / D121-E
1	HHP8M	1631600C	121-H / 121-F / D121-F

Square Head Plugs



For larger sizes and other materials, please refer to page 721 of Catalogue "DGCL2011"

Size	125# Brass		
Male NPT	Dixon Part #	Standard Part #	Competitor Part #
1/8	211-0200	2110200C	109-A / D109-A
1/4	211-0400	2110400C	109-B / D109-B
3/8	211-0600	2110600C	109-C / D109-C
1/2	211-0800	2110800C	109-D / D109-D / DC109-D
3/4	211-1200	2111200C	109-E / D109-E / DC109-E

Socket Head Plugs



Size	125# Brass		
Male NPT	Dixon Part #	Standard Part #	Competitor Part #
1/8	219-0200	2190200C	118-A / D118-A
1/4	219-0400	2190400C	118-B / D118-B
3/8	219-0600	2190600C	118-C / D118-C
1/2	219-0800	2190800C	118-D / D118-D / DC118-D
3/4	219-1200	2191200C	118-E / C118-E / D118-E / DC118-E

Threaded Pipe Fittings

90° Male Pipe Elbows



Size		125# Brass		
Male NPT	Male NPT	Dixon Part #	Standard Part #	Competitor Part #
1/8	1/8	169-0202	1690202C	99-A / D99-A
1/4	1/4	169-0404	1690404C	99-B / D99-B
3/8	3/8	169-0606	1690606C	99-C / D99-C
1/2	1/2	169-0808	1690808C	99-D / D99-D

90° Female Pipe Elbows

For larger sizes and other materials, please refer to page 717 of Catalogue "DGCL2011"



Size		125# Brass			150# Stainless Steel
Female NPT	Female NPT	Dixon Part #	Standard Part #	Competitor Part #	Dixon Part #
1/8	1/8	EL1F1F	3020202C	100-A / X100-A / FO100-A / D100-A / DF100-A / DC100-A	EL9018SS
1/4	1/4	EL2F2F	3020404C	100-B / X100-B / FO100-B / D100-B / DF100-B / DC100-B	EL90025SS
3/8	3/8	EL3F3F	3020606C	100-C / X100-C / FO100-C / D100-C / DF100-C / DC100-C	EL90038SS
1/2	1/2	EL4F4F	3020808C	100-D / 100CA-D / FO100-D / X100-D / D100-D / DF100-D / DC100-D	EL90050SS
3/4	3/4	EL6F6F	3021212C	100-E / C100-E / 100CA-E / FO100-E / D100-E / DF100-E / DC100-E	EL90075SS

90° Street Elbows

For larger sizes and other materials, please refer to page 719 of Catalogue "DGCL2011"



Size		125# Brass			150# Stainless Steel
Female NPT	Male NPT	Dixon Part #	Standard Part #	Competitor Part #	Dixon Part #
1/8	1/8	SE1F1M	3040202C	X115-A / 115-A / 116-A / D115-A / D116-A / DC116-A	SE9018SS
1/4	1/8	SE2F1M	3040402C	X115-BA / 115-BA / 116-BA	-
1/4	1/4	SE2F2M	3040404C	X115-B / 115-B / 116-B / D115-B / D116-B / DC116-B	SE9025SS
3/8	1/4	SE3F2M	3040604C	116-CB	-
3/8	3/8	SE3F3M	3040606C	X115-C / 115-C / 116-C / D115-C / D116-C / DC116-C	SE9038SS
1/2	3/8	SE4F3M	3040806C	X115-DC / 116-DC	-
1/2	1/2	SE4F4M	3040808C	X115-D / 115-D / 116CA-D / 116-D / D115-D / D116-D / DC116-D	SE9050SS
3/4	1/2	SE6F4M	3041208C	-	-
3/4	3/4	SE6F6M	3041212C	X115-E / 115-E / 116CA-E / 116-E / D115-E / D116-E / DC116-E	SE9075SS

Threaded Pipe Fittings

45° Street Elbows



For larger sizes and other materials, please refer to page 719 of Catalogue "DGCL2011"

Size		125# Brass		
Female NPT	Male NPT	Dixon Part #	Standard Part #	Competitor Part #
1/8	1/8	306-0202	3060202C	X124-A / 124-A / FO124-A / D124-A / DC124-A
1/4	1/4	306-0404	3060404C	X124-B / 124-B / FO124-B / D124-B / DC124-B
3/8	3/8	306-0606	3060606C	X124-C / 124-C / FO124-C / D124-C / DC124-C
1/2	1/2	306-0808	3060808C	X124-D / 124-D / D124-D / DC124-D
3/4	3/4	306-1212	3061212C	X124-E / 124-E / DC124-E

Female Tees



For larger sizes and other materials, please refer to page 720 of Catalogue "DGCL2011"

Size			125# Brass			150# Stainless Steel
Female NPT	Female NPT	Female NPT	Dixon Part #	Standard Part #	Competitor Part #	Dixon Part #
1/8	1/8	1/8	322-0202	3220202C	X101-A / 101-A / FO101-A / D101-A / DF101-A / DC101-A	-
1/4	1/4	1/4	322-0404	3220404C	X101-B / 101-B / FO101-B / D101-B / DF101-B / DC101-B	FT25SS
3/8	3/8	3/8	322-0606	3220606C	X101-C / 101-C / FO101-C / D101-C / DF101-C / DC101-C	FT38SS
1/2	1/2	1/2	322-0808	3220808C	X101-D / 101-D / FO101-D / D101-D / DF101-D / DC101-D	FT50SS
3/4	3/4	3/4	322-1212	3221212C	101-E / C101-E / FO101-E / D101-E / DF101-E / DC101-E	FT75SS

Male Branch Tees



Size			125# Brass		
Female NPT	Male NPT	Female NPT	Dixon Part #	Standard Part #	Competitor Part #
1/8	1/8	1/8	324-0202	3240202C	X106-A / 106-A / FO106-A / D106-A
1/4	1/4	1/4	324-0404	3240404C	X106-B / 106-B / FO106-B / D106-B
3/8	3/8	3/8	324-0606	3240606C	X106-C / 106-C / FO106-C / D106-C
1/2	1/2	1/2	324-0808	3240808C	106-D / FO106-D / DF106-D
3/4	3/4	3/4	324-1212	3241212C	-

Threaded Pipe Fittings

Street Tees

For larger sizes and other materials, please refer to page 720 of Catalogue "DGCL2011"



Size			125# Brass		
Male NPT	Female NPT	Female NPT	Dixon Part #	Standard Part #	Competitor Part #
1/8	1/8	1/8	326-0202	3260202C	X107-A / 107-A / FO107-A / D107-A
1/4	1/4	1/4	326-0404	3260404C	X107-B / 107-B / FO107-B / D107-B
3/8	3/8	3/8	326-0606	3260606C	X107-C / 107-C / FO107-C / D107-C / DF107-C
1/2	1/2	1/2	326-0808	3260808C	X107-D / 107-D / FO107-D / D107-D
3/4	3/4	3/4	326-1212	3261212C	X107-E / 107-E / D107-E

Female Pipe Crosses

For larger sizes and other materials, please refer to page 721 of Catalogue "DGCL2011"



Size				125# Brass		
Female NPT	Female NPT	Female NPT	Female NPT	Dixon Part #	Standard Part #	Competitor Part #
1/8	1/8	1/8	1/8	228-0202	2280202C	X102-A / 102-A / FO102-A / D102-A / DF102-A / DC102-A
1/4	1/4	1/4	1/4	228-0404	2280404C	X102-B / 102-B / FO102-B / D102-B / DF102-B / DC102-B
3/8	3/8	3/8	3/8	228-0606	2280606C	X102-C / 102-C / FO102-C / D102-C / DF102-C / DC102-C
1/2	1/2	1/2	1/2	228-0808	2280808C	X102-D / C102-D / FO102-D / 102-D / D102-D / DF102-D / DC102-D
3/4	3/4	3/4	3/4	228-1212	2281212C	102-E / C102-E / DC102-E

Industry Interchange Chart

This industry interchange chart is compiled of known popular Canadian part numbers, which are commonly used in the brass fitting industry. As there are numerous companies selling brass with 1000's of part numbers, we could not easily include them all, therefore this should only be considered a partial interchange listing.

If you can't locate the part that you require, please call our customer service at 877-963-4966

Industry part #	Dixon part #	Page #	Industry part #	Dixon part #	Page #	Industry part #	Dixon part #	Page #
100-A	EL1F1F	40	1021212C	BN66	4	104-B	TUN2F	36
100-B	EL2F2F	40	1021212SS	RN66	4	104-C	TUN3F	36
100-C	EL3F3F	40	1021612C	BN86	4	104-D	TUN4F	36
100CA-D	EL4F4F	40	1021612SS	RN86	4	104-E	TUN5F	36
100CA-E	EL6F6F	40	1021616C	BN88	4	104-H	TUN6F	36
100-D	EL4F4F	40	1022012C	BN106	4	1050404C	105-0404	5
100-E	EL6F6F	40	1022016C	BN108	4	1050604C	105-0604	5
101-A	322-0202	41	102-A	228-0202	42	1050606C	105-0606	5
101-B	322-0404	41	102-B	228-0404	42	1050806C	105-0806	5
101-C	322-0606	41	102-C	228-0606	42	1050808C	105-0808	5
101-D	322-0808	41	102-D	228-0808	42	106-A	324-0202	41
101-E	322-1212	41	102-E	228-1212	42	106-B	324-0404	41
1020202C	BN11	4	1030404C	103-0404	4	106-C	324-0606	41
1020202SS	RN11	4	1030604C	103-0604	4	106-D	324-0808	41
1020204C	BN122	4	1030606C	103-0606	4	107-A	326-0202	42
1020302C	BN151	4	1030806C	103-0806	4	107-B	326-0404	42
1020302SS	RN151	4	1030808C	103-0808	4	107-C	326-0606	42
1020304C	BN152	4	1031212C	103-1212	4	107-D	326-0808	42
1020304SS	RN152	4	103-A	BA1F1F	36	107-E	326-1212	42
1020402C	BN21	4	103-B	BA2F2F	36	108-A	213-0200	38
1020402SS	RN21	4	103-C	BA3F3F	36	108-B	213-0400	38
1020404C	BN22	4	103CA-D	BA4F4F	36	108-C	213-0600	38
1020404SS	RN22	4	103CA-E	BA6F6F	36	108-D	213-0800	38
1020406C	BN23	4	103-D	BA4F4F	36	108-E	213-1200	38
1020406SS	RN23	4	103-E	BA6F6F	36	109-A	211-0200	39
1020408C	BN24	4	1040202C	BF11	5	109-B	211-0400	39
1020502C	BN251	4	1040204C	BF12	5	109-C	211-0600	39
1020502SS	RN251	4	1040302C	BF151	5	109-D	211-0800	39
1020504C	BN252	4	1040304C	BF152	5	109-E	211-1200	39
1020504SS	RN252	4	1040402C	BF21	5	110-BA	HB1F2M	33
1020506C	BN253	4	1040404C	BF22	5	110-CA	HB1F3M	33
1020506SS	RN253	4	1040404SS	RF22	5	110CA-ED	HB3F6M	33
1020602C	BN31	4	1040406C	BF23	5	110CA-HB	HB3F8M	33
1020602SS	RN31	4	1040408C	BF24	5	110CA-HC	HB4F6M	33
1020604C	BN32	4	1040502C	BF251	5	110CA-HD	HB4F8M	33
1020604SS	RN32	4	1040504C	BF252	5	110CA-HE	HB6F8M	33
1020606C	BN33	4	1040506C	BF253	5	110-CB	HB1F4M	33
1020606SS	RN33	4	1040602C	BF31	5	110-DA	HB1F6M	33
1020608C	BN34	4	1040604C	BF32	5	110-DB	HB2F3M	33
1020608SS	RN34	4	1040604SS	RF32	5	110-DC	HB2F4M	33
1020612C	BN36	4	1040606C	BF33	5	110-EA	HB2F6M	33
1020804C	BN42	4	1040606SS	RF33	5	110-EB	HB2F8M	33
1020804SS	RN42	4	1040608C	BF34	5	110-EC	HB3F4M	33
1020806C	BN43	4	1040612C	BF36	5	110-ED	HB3F6M	33
1020806SS	RN43	4	1040804C	BF42	5	110-FB	HB3F8M	33
1020808C	BN44	4	1040806C	BF43	5	110-FC	HB4F6M	33
1020808SS	RN44	4	1040808C	BF44	5	110-FD	HB4F8M	33
1020812C	BN46	4	1040808SS	RF44	5	110-FE	HB6F8M	33
1020812SS	RN46	4	1040812C	BF46	5	110-HB	HB3F8M	33
1021006C	BN53	4	1041006C	BF53	5	110-HC	HB4F6M	33
1021006SS	RN53	4	1041008C	BF54	5	110-HD	HB4F8M	33
1021008C	BN54	4	1041012C	BF56	5	110-HE	HB6F8M	33
1021008SS	RN54	4	1041208C	BF64	5	112-A	165-0202	34
1021012C	BN56	4	1041212C	BF66	5	112-B	165-0404	34
1021012SS	RN56	4	1041612C	BF86	5	112-C	165-0606	34
1021208C	BN64	4	1041616C	BF88	5	112-D	165-0808	34
1021208SS	RN64	4	1042016C	BF108	5	112-E	165-1212	34

Industry Interchange Chart (cont)

This industry interchange chart is compiled of known popular Canadian part numbers, which are commonly used in the brass fitting industry. As there are numerous companies selling brass with 1000's of part numbers, we could not easily include them all, therefore this should only be considered a partial interchange listing.

If you can't locate the part that you require, please call our customer service at 877-963-4966

Industry part #	Dixon part #	Page #	Industry part #	Dixon part #	Page #	Industry part #	Dixon part #	Page #
112-F	165-1616	34	119-EC	RC6F3F	36	125-10D	BN54	4
112-H	165-1616	34	119-ED	RC6F4F	36	125-10E	BN56	4
113-A1 1/2	166-0215	35	120-AA	RA1F1M	33	125-12D	BN64	4
113-A2	166-0220	35	120-BA	RA2F1M	33	125-12E	BN66	4
113-A2 1/2	166-0225	35	120-BB	RA2F2M	33	125-16E	BN86	4
113-A3	166-0230	35	120-CA	RA3F1M	33	125-16F	BN88	4
113-A3 1/2	166-0235	35	120-CB	RA3F2M	33	125-16H	BN88	4
113-A4	166-0240	35	120-CC	RA3F3M	33	125-2A	BN11	4
113-B1 1/2	166-0415	35	120-DB	RA4F2M	33	125-2B	BN122	4
113-B2	166-0420	35	120-DC	RA4F3M	33	125-3A	BN151	4
113-B2 1/2	166-0425	35	120-DD	RA4F4M	33	125-3B	BN152	4
113-B3	166-0430	35	120-EC	RA6F3M	33	125-4A	BN21	4
113-B3 1/2	166-0435	35	120-ED	RA6F4M	33	125-4B	BN22	4
113-B4	166-0440	35	120-EE	RA6F6M	33	125-4C	BN23	4
113-B5	166-0450	35	121-A	HHP1M	39	125-4D	BN24	4
113-C1 1/2	166-0640	35	121-B	HHP2M	39	125-5A	BN251	4
113-C2	166-0615	35	121-C	HHP3M	39	125-5B	BN252	4
113-C2 1/2	166-0620	35	121-D	HHP4M	39	125-5C	BN253	4
113-C3	166-0625	35	121-E	HHP6M	39	125-6A	BN31	4
113-C3 1/2	166-0630	35	121-F	HHP8M	39	125-6B	BN32	4
113-C4	166-0635	35	121-H	HHP8M	39	125-6C	BN33	4
113-D1 1/2	166-0815	35	122-A	BCN12	34	125-6D	BN34	4
113-D2	166-0820	35	122-B	BCN25	34	125-6E	BN36	4
113-D2 1/2	166-0825	35	122-BA	HN2M1M	34	125-8B	BN42	4
113-D3	166-0830	35	122-C	BCN37	34	125-8C	BN43	4
113-D3 1/2	166-0835	35	122-CA	HN3M1M	34	125-8D	BN44	4
113-E1 1/2	166-0840	35	122-CB	HN3M2M	34	125-8E	BN46	4
113-E2	166-1220	35	122-D	BCN50	34	125CA-12E	BN66	4
113-E2 1/2	166-1225	35	122-DB	HN4M2M	34	125CA-16H	BN88	4
113-E3	166-1230	35	122-DC	HN4M3M	34	125CA-8D	BN44	4
113-E3 1/2	166-1235	35	122-E	BCN75	34	1260202C	126-0202	6
115-A	SE1F1M	40	122-ED	HN6M4M	34	1260302C	126-0302	6
115-B	SE2F2M	40	122-F	BCN100	34	1260304C	126-0304	6
115-BA	SE2F1M	40	122-H	BCN100	34	1260402C	126-0402	6
115-C	SE3F3M	40	123-4	179-0404	10	1260404C	126-0404	6
115-D	SE4F4M	40	123-5	179-0505	10	1260406C	126-0406	6
115-E	SE6F6M	40	123-6	179-0606	10	1260504C	126-0504	6
116-A	SE1F1M	40	1240202K	BFS11	6	1260604C	126-0604	6
116-B	SE2F2M	40	1240302K	BFS151	6	1260606C	126-0606	6
116-BA	SE2F1M	40	1240304K	BFS152	6	1260608C	126-0608	6
116-C	SE3F3M	40	1240402K	BFS21	6	1260806C	126-0806	6
116CA-D	SE4F4M	40	1240404K	BFS22	6	1260808C	126-0808	6
116CA-E	SE6F6M	40	1240406K	BFS23	6	1261212C	126-1212	6
116-CB	SE3F2M	40	1240504K	BFS252	6	126-12E	BF66	5
116-D	SE4F4M	40	1240506K	BFS253	6	126-16E	BF86	5
116-DC	SE4F3M	40	1240604K	BFS32	6	126-2A	BF11	5
116-E	SE6F6M	40	1240606K	BFS33	6	126-2B	BF12	5
118-A	219-0200	39	1240608K	BFS34	6	126-3A	BF151	5
118-B	219-0400	39	1240806K	BFS43	6	126-3B	BF152	5
118-C	219-0600	39	1240808K	BFS44	6	126-4A	BF21	5
118-D	219-0800	39	1241212K	BFS66	6	126-4B	BF22	5
118-E	219-1200	39	124-A	306-0202	41	126-4C	BF23	5
119-BA	RC2F1F	36	124-B	306-0404	41	126-5A	BF251	5
119-CA	RC3F1F	36	124-C	306-0606	41	126-5B	BF252	5
119-CB	RC3F2F	36	124-D	306-0808	41	126-5C	BF253	5
119-DB	RC4F2F	36	124-E	306-1212	41	126-6A	BF31	5
119-DC	RC4F3F	36	125-10C	BN53	4	126-6B	BF32	5

Industry Interchange Chart (cont)

This industry interchange chart is compiled of known popular Canadian part numbers, which are commonly used in the brass fitting industry. As there are numerous companies selling brass with 1000's of part numbers, we could not easily include them all, therefore this should only be considered a partial interchange listing.

If you can't locate the part that you require, please call our customer service at 877-963-4966

Industry part #	Dixon part #	Page #	Industry part #	Dixon part #	Page #	Industry part #	Dixon part #	Page #
126-6C	BF33	5	1291212C	EL6H6M	7	134-CD	BSM34	37
126-6D	BF34	5	129-16	BM 8	9	134-DC	BSM43	37
126-8B	BF42	5	1291612C	EL8H6M	7	134-DD	BSM44	37
126-8C	BF43	5	1291616C	EL8H8M	7	134-EE	BSM66	37
126-8D	BF44	5	129-3	BM 15	9	134-ST-BB	176-0404	37
127-44	142-0407	8	129-4	BM2	9	134-ST-CC	176-0606	37
127-46	142-0410	8	129-5	BM25	9	135-LB	158-0904	11
127-4X6	142-0410	8	129-6	BM3	9	135-LC	158-0906	11
127-55	142-0508	8	129-8	BM4	9	135-RB	156-0904	12
127-5X5	142-0508	8	130-12E	126-1212	6	135-RC	156-0906	12
127-66	142-0610	8	130-2A	126-0202	6	136-L	OA52	11
127-68	142-0612	8	130-3A	126-0302	6	136-R	OA50	12
127-6X6	142-0610	8	130-3B	126-0304	6	1390402C	139-0402	8
127-6X8	142-0612	8	130-4A	126-0402	6	1390404C	139-0404	8
127-88	142-0812	8	130-4B	126-0404	6	1390602C	139-0602	8
127-8X8	142-0812	8	130-4C	126-0406	6	1390604C	139-0604	8
128-1212	144-1217	9	130-5B	126-0504	6	1390606C	139-0606	8
128-12X12	144-1217	9	130-6B	126-0604	6	1390804C	139-0804	8
128-34	143-0307	8	130-6C	126-0606	6	1390806C	139-0806	8
128-3X4	143-0307	8	130-6D	126-0608	6	1390808C	139-0808	8
128-44	143-0407	8	130-8C	126-0806	6	139-10C	EL5H3M	7
128-45	143-0408	8	130-8D	126-0808	6	139-10D	EL5H4M	7
128-46	144-0410	9	131-12E	BFS66	6	1391208C	139-1208	8
128-4X4	143-0407	8	131-2A	BFS11	6	139-12D	EL6H4M	7
128-4X5	143-0408	8	131-3A	BFS151	6	139-12E	EL6H6M	7
128-4X6	144-0410	9	131-3B	BFS152	6	139-16E	EL8H6M	7
128-55	143-0508	8	131-4A	BFS21	6	139-3A	EL15H1M	7
128-56	144-0510	9	131-4B	BFS22	6	139-4A	EL2H1M	7
128-5X5	143-0508	8	131-4C	BFS23	6	139-4B	EL2H2M	7
128-5X6	144-0510	9	131-5B	BFS252	6	139-4C	EL2H3M	7
128-66	144-0610	9	131-6B	BFS32	6	139-5A	EL25H1M	7
128-68	143-0612	8	131-6C	BFS33	6	139-5B	EL25H2M	7
128-6X6	144-0610	9	131-6D	BFS34	6	139-5C	EL25H3M	7
128-6X8	143-0612	8	131-8C	BFS43	6	139-6A	EL3H1M	7
128-810	143-0814	8	131-8D	BFS44	6	139-6B	EL3H2M	7
128-88	143-0812	8	132-3R	OA60	12	139-6C	EL3H3M	7
128-8X10	143-0814	8	132-4R	OA61	12	139-6D	EL3H4M	7
128-8X8	143-0812	8	132-5R	OA62	12	139-8B	EL4H2M	7
1290302C	EL15H1M	7	132-6R	OA63	12	139-8C	EL4H3M	7
1290402C	EL2H1M	7	133-3L	OA70	11	139-8D	EL4H4M	7
1290404C	EL2H2M	7	133-4L	OA71	11	139F-4A	134-0402	7
1290406C	EL2H3M	7	133-5L	OA72	11	140-4A	139-0402	8
1290502C	EL25H1M	7	133-6L	OA73	11	140-4B	139-0404	8
1290504C	EL25H2M	7	1340402C	134-0402	7	140-6A	139-0602	8
1290506C	EL25H3M	7	1340404C	134-0404	7	140-6B	139-0604	8
1290602C	EL3H1M	7	1340604C	134-0604	7	140-6C	139-0606	8
1290604C	EL3H2M	7	1340606C	134-0606	7	140-8C	139-0806	8
1290606C	EL3H3M	7	1340804C	134-0804	7	1420307C	142-0307	8
1290608C	EL3H4M	7	1340806C	134-0806	7	1420407C	142-0407	8
1290804C	EL4H2M	7	1340808C	134-0808	7	1420410C	142-0410	8
1290806C	EL4H3M	7	1341212C	134-1212	7	1420508C	142-0508	8
1290808C	EL4H4M	7	134-AA	BSM11	37	1420610C	142-0610	8
129-10	BM5	9	134-BA	BSM21	37	1420612C	142-0612	8
1291006C	EL5H3M	7	134-BB	BSM22	37	1420812C	142-0812	8
1291008C	EL5H4M	7	134-BC	BSM32	37	1430307K	143-0307	8
129-12	BM6	9	134-CB	BSM32	37	1430407K	143-0407	8
1291208C	EL6H4M	7	134-CC	BSM33	37	1430408K	143-0408	8

Industry Interchange Chart (cont)

This industry interchange chart is compiled of known popular Canadian part numbers, which are commonly used in the brass fitting industry. As there are numerous companies selling brass with 1000's of part numbers, we could not easily include them all, therefore this should only be considered a partial interchange listing.

If you can't locate the part that you require, please call our customer service at 877-963-4966

Industry part #	Dixon part #	Page #	Industry part #	Dixon part #	Page #	Industry part #	Dixon part #	Page #
1430508K	143-0508	8	1660440C	166-0440	35	1780606C	BM 3	9
1430612K	143-0612	8	1660450C	166-0450	35	1780606SS	RM 3	9
1430812K	143-0812	8	1660615C	166-0615	35	1780806C	BM 4-3	9
1430814K	143-0814	8	1660620C	166-0620	35	1780808C	BM 4	9
143-4A	268B0402	3	1660625C	166-0625	35	1780808SS	RM 4	9
143-4B	268B0404	3	1660630C	166-0630	35	1781006C	BM 5-3	9
143-6A	268B0602	3	1660635C	166-0635	35	1781010C	BM 5	9
143-6B	268B0604	3	1660640C	166-0640	35	1781208C	BM 6-4	9
143-6C	268B0606	3	1660815C	166-0815	35	1781212C	BM 6	9
143-8C	268B0806	3	1660820C	166-0820	35	1781212SS	RM 6	9
1440306K	144-0306	9	1660825C	166-0825	35	1781616C	BM 8	9
1440410K	144-0410	9	1660830C	166-0830	35	1790202C	179-0202	10
1440510K	144-0510	9	1660835C	166-0835	35	1790303C	179-0303	10
1440610K	144-0610	9	1660840C	166-0840	35	1790402C	179-0402	10
1440812K	144-0812	9	1661220C	166-1220	35	1790404C	179-0404	10
1441217K	144-1217	9	1661225C	166-1225	35	1790505C	179-0505	10
1450609K	145-0609	9	1661230C	166-1230	35	1790604C	179-0604	10
1451217K	145-1217	9	1661235C	166-1235	35	1790606C	179-0606	10
1520306K	OA59	12	1690202C	169-0202	40	1790806C	179-0806	10
1520309K	OA60	12	1690404C	169-0404	40	1790808C	179-0808	10
1520409K	OA61	12	1690606C	169-0606	40	1791010C	179-1010	10
1520509K	OA62	12	1690808C	169-0808	40	1791208C	179-1208	10
1520609K	OA63	12	1720202C	BSM 11	37	1791212C	179-1212	10
1540306K	OA69	11	1720402C	BSM 21	37	1800408F	see page	17
1540309K	OA70	11	1720404C	BSM 22	37	1800408FSS	see page	17
1540409K	OA71	11	1720604C	BSM 32	37	1800409F	see page	17
1540509K	OA72	11	1720606C	BSM 33	37	1800409FSS	see page	17
1540609K	OA73	11	1720608C	BSM 34	37	1800410F	see page	17
1560904C	156-0904	12	1720806C	BSM 43	37	1800410FSS	see page	17
1560906C	156-0906	12	1720808C	BSM 44	37	1800509F	see page	17
1560909C	OA50	12	1721212C	BSM 66	37	1800509FSS	see page	17
1580904C	158-0904	11	1740404C	174-0404	37	1800510F	see page	17
1580906C	158-0906	11	1740606C	174-0606	37	1800510FSS	see page	17
1580909C	OA52	11	1740808C	174-0808	37	1800511F	see page	17
1630200C	HHP1M	39	1760202C	176-0202	37	1800610F	see page	17
1630400C	HHP2M	39	1760404C	176-0404	37	1800610FSS	see page	17
1630600C	HHP3M	39	1760606C	176-0606	37	1800611F	see page	17
1630800C	HHP4M	39	1760808C	176-0808	37	1800611FSS	see page	17
1631200C	HHP6M	39	1770202C	177-0202	10	1800612F	see page	17
1631600C	HHP8M	39	1770303C	177-0303	10	1800612FSS	see page	17
1650202C	165-0202	34	1770402C	177-0402	10	1800814F	see page	17
1650404C	165-0404	34	1770404C	177-0404	10	1800814FSS	see page	17
1650606C	165-0606	34	1770505C	177-0505	10	1800815F	see page	17
1650808C	165-0808	34	1770604C	177-0604	10	1800815FSS	see page	17
1651212C	165-1212	34	1770606C	177-0606	10	1800816F	see page	17
1651616C	165-1616	35	1770806C	177-0806	10	1820402S	see page	17
1660215C	166-0215	35	1770808C	177-0808	10	1820402SS	see page	17
1660220C	166-0220	35	1771010C	177-1010	10	1820404S	see page	17
1660225C	166-0225	35	1771208C	177-1208	10	1820404SS	see page	17
1660230C	166-0230	35	1771212C	177-1212	10	1820406S	see page	17
1660235C	166-0235	35	1780202C	BM 1	9	1820504S	see page	17
1660240C	166-0240	35	1780303C	BM 15	9	1820504SS	see page	17
1660415C	166-0415	35	1780402C	BM 2-1	9	1820506S	see page	17
1660420C	166-0420	35	1780404C	BM 2	9	1820604S	see page	17
1660425C	166-0425	35	1780404SS	RM 2	9	1820604SS	see page	17
1660430C	166-0430	35	1780505C	BM 25	9	1820606S	see page	17
1660435C	166-0435	35	1780604C	BM 3-2	9	1820606SS	see page	17

Industry Interchange Chart (cont)

This industry interchange chart is compiled of known popular Canadian part numbers, which are commonly used in the brass fitting industry. As there are numerous companies selling brass with 1000's of part numbers, we could not easily include them all, therefore this should only be considered a partial interchange listing.

If you can't locate the part that you require, please call our customer service at 877-963-4966

Industry part #	Dixon part #	Page #	Industry part #	Dixon part #	Page #	Industry part #	Dixon part #	Page #
1820608S	see page	17	1838168K	BN44RU99	17	194-B	504-1204	28
1820804S	see page	17	1840404A	see page	18	194-C	504-1206	28
1820806S	see page	17	1840406A	see page	18	194-D	504-1208	28
1820806SS	see page	17	1840504A	see page	18	195-10	BCF75	26
1820808S	see page	17	1840604A	see page	18	195-12	BCF76	26
1820808SS	see page	17	1840606A	see page	18	195-6	BCF73	26
1834082K	BN21RU50	17	1840808A	see page	18	195-8	BCF74	26
1834082KSS	RN21RU50	17	1854084K	185-4084	18	195L-10	BCF75	26
1834084K	BN22RU50	17	1854086K	185-4086	18	195L-12	BCF76	26
1834084KSS	RN22RU50	17	1854094K	185-4094	18	195L-8	BCF74	26
1834086K	BN23RU50	17	1854096K	185-4096	18	196-C	BA73	29
1834092K	BN21RU56	17	1854104K	185-4104	18	196-D	BA74	29
1834092KSS	RN21RU56	17	1854106K	185-4106	18	196-E	BA776	29
1834094K	BN22RU56	17	1855094K	185-5094	18	196-W	BA777	29
1834094KSS	RN22RU56	17	1855104K	185-5104	18	197-B	507-1204	30
1834096K	BN23RU56	17	1855114K	185-5114	18	197-C	507-1206	30
1834102K	BN21RU62	17	1856104K	185-6104	18	197-D	BA794	30
1834102KSS	RN21RU62	17	1856106K	185-6106	18	197-E	BA796	30
1834104K	BN22RU62	17	1856114K	185-6114	18	198-A	BA971	29
1834104KSS	RN22RU62	17	1856116K	185-6116	18	198-B	BA972	29
1834106K	BN23RU62	17	1856124K	185-6124	18	198-C	BA973	29
1835094K	BN252RU56	17	1856126K	185-6126	18	198-D	BA974	29
1835094KSS	RN252RU56	17	1858148K	185-8148	18	198-E	BA976	29
1835096K	BN253RU56	17	1858158K	185-8158	18	199-C	BMA973	28
1835104K	BN252RU62	17	1858168K	185-8168	18	199-D	BMA974	28
1835104KSS	RN252RU62	17	1870408K	187-0408	16	199-E	BMA976	28
1835106K	BN253RU62	17	1870409K	187-0409	16	199S-D	BAS974	28
1835114K	BN252RU68	17	1870410K	187-0410	16	199S-E	BAS976	28
1835114KSS	RN252RU68	17	1870610K	187-0610	16	2001025C	BFW1025	13
1835116K	BN253RU68	17	1870611K	187-0611	16	2001100C	BFMW1100	13
1836104K	BN32RU62	17	1870612K	187-0612	16	2001175C	BFW1175	13
1836104KSS	RN32RU62	17	1925-4B	103-0404	4	2001225C	BFMW1225	13
1836106K	BN33RU62	17	1925-6B	103-0604	4	2001500C	BFMW1500	13
1836106KSS	RN33RU62	17	1925-6C	103-0606	4	2004000C	BFL400	13
1836108K	BN34RU62	17	1925-8C	103-0806	4	2004530C	BFL450	13
1836114K	BN32RU68	17	1925-8D	103-0808	4	2004750C	BFM478	13
1836114KSS	RN32RU68	17	193-10	BCM75	26	2005000C	BFL500	13
1836116K	BN33RU68	17	193-12	BCM76	26	2005005C	BFM500	13
1836116KSS	RN33RU68	17	193-195-10	BC75	26	2005250C	BFL525	13
1836118K	BN34RU68	17	193-195-12	BC76	26	2005255C	BFM525	13
1836124K	BN32RU75	17	193-195-16	BC78	26	2005310C	BFM531	13
1836124KSS	RN32RU75	17	193-195-6	BC73	26	2005500C	BFL548	13
1836126K	BN33RU75	17	193-195-8	BC74	26	2005620C	BFM562	13
1836126KSS	RN33RU75	17	193-195H-10	BC75	26	2005930C	BFM593	13
1836128K	BN34RU75	17	193-195H-12	BC76	26	2006250C	BFL625	13
1838144K	BN42RU87	17	193-195H-16	BC78	26	2006255C	BFM625	13
1838146K	BN43RU87	17	193-195H-6	BC73	26	2006500C	BFL650	13
1838146KSS	RN43RU87	17	193-195H-8	BC74	26	2006560C	BFM656	13
1838148K	BN44RU87	17	193-195HL-10	BC75	26	2006750C	BFL675	13
1838148KSS	RN44RU87	17	193-195HL-12	BC76	26	2006900C	BFM687	13
1838154K	BN42RU93	17	193-195HL-16	BC78	26	2007180C	BFM718	13
1838156K	BN43RU93	17	193-195HL-8	BC74	26	2007250C	BFL725	13
1838156KSS	RN43RU93	17	193-6	BCM73	26	2007500C	BFL750	13
1838158K	BN44RU93	17	193-8	BCM74	26	2007505C	BFM750	13
1838158KSS	RN44RU93	17	193L-10	BCM75	26	2007750C	BFL775	13
1838164K	BN42RU99	17	193L-12	BCM76	26	2007810C	BFM781	13
1838166K	BN43RU99	17	193L-8	BCM74	26	2008120C	BFM812	13

Industry Interchange Chart (cont)

This industry interchange chart is compiled of known popular Canadian part numbers, which are commonly used in the brass fitting industry. As there are numerous companies selling brass with 1000's of part numbers, we could not easily include them all, therefore this should only be considered a partial interchange listing.

If you can't locate the part that you require, please call our customer service at 877-963-4966

Industry part #	Dixon part #	Page #	Industry part #	Dixon part #	Page #	Industry part #	Dixon part #	Page #
2008750C	BFW875	13	2710604C	271-0604	20	2740812C	BPF46	21
2009250C	BFW925	13	2710606C	271-0606	20	2741006C	BPF53	21
2009750C	BFW975	13	2710806C	271-0806	20	2741008C	BPF54	21
2009950C	BFM W1150	13	2710808C	271-0808	20	2741208C	BPF64	21
200FC	855	15	2711212C	271-1212	20	2741212C	BPF66	21
200FC3	856-10	15	2720402C	BPN21	20	2741612C	BPF86	21
200FC4A	856-4	15	2720402SS	RPN21	20	2741616C	BPF88	21
200FC4B	856-3	15	2720404C	BPN22	20	2780402C	BPFS21	22
200FC5	856-2	15	2720404SS	RPN22	20	2780404C	BPFS22	22
200FC6A	856-1	15	2720406C	BPN23	20	2780406C	BPFS23	22
200FC6B	856-5	15	2720502C	BPN251	20	2780604C	BPFS32	22
200FC8A	856-8	15	2720504C	BPN252	20	2780606C	BPFS33	22
200FC8B	856-9	15	2720602C	BPN31	20	2780808C	BPFS44	22
200-W	GHC7	28	2720604C	BPN32	20	2780812C	BPFS46	22
202-W	500YC	32	2720604SS	RPN32	20	2781212C	BPFS66	22
202-WV	500GHY	32	2720606C	BPN33	20	2800402C	280-0402	22
203-W	BA977	28	2720606SS	RPN33	20	2800404C	280-0404	22
207BH12	207-BH12	38	2720608C	BPN34	20	2800604C	280-0604	22
207BH2	207-BH2	38	2720612C	BPN36	20	2800606C	280-0606	22
207BH4	207-BH4	38	2720804C	BPN42	20	2800608C	280-0608	22
207BH4S	207-BH4S	38	2720806C	BPN43	20	2800808C	280-0808	22
207BH6	207-BH6	38	2720806SS	RPN43	20	2801008C	280-1008	22
207BH8	207-BH8	38	2720808C	BPN44	20	2801212C	280-1212	22
2110200C	211-0200	39	2720808SS	RPN44	20	2820407C	282-0407	22
2110400C	211-0400	39	2720812C	BPN46	20	2820408C	282-0408	22
2110600C	211-0600	39	2721006C	BPN53	20	2820610C	282-0610	22
2110800C	211-0800	39	2721008C	BPN54	20	2820812C	282-0812	22
2111200C	211-1200	39	2721012C	BPN56	20	2821014C	282-1014	22
2130200C	213-0200	38	2721208C	BPN64	20	2821217C	282-1217	22
2130400C	213-0400	38	2721208SS	RPN64	20	2840410C	284-0410	23
2130600C	213-0600	38	2721212C	BPN66	20	2840510C	284-0510	23
2130800C	213-0800	38	2721212SS	RPN66	20	2840610C	284-0610	23
2131200C	213-1200	38	2721612C	BPN86	20	2841217C	284-1217	23
2190200C	219-0200	39	2721616C	BPN88	20	2860407C	286-0407	23
2190400C	219-0400	39	2721616SS	RPN88	20	2860408C	286-0408	23
2190600C	219-0600	39	2730402C	273-0402	21	2860409C	286-0409	23
2190800C	219-0800	39	2730404C	273-0404	21	2860609C	286-0609	23
2191200C	219-1200	39	2730602C	273-0602	21	2860812C	286-0812	23
2280202C	228-0202	42	2730604C	273-0604	21	2861014C	286-1014	23
2280404C	228-0404	42	2730606C	273-0606	21	2861217C	286-1217	23
2280606C	228-0606	42	2730806C	273-0806	21	2870407C	287-0407	23
2280808C	228-0808	42	2730808C	273-0808	21	2870407SS	287-0407SS	23
2281212C	228-1212	42	2731208C	273-1208	21	2870408C	287-0408	23
268B0402	268B0402	3	2731212C	273-1212	21	2870608C	287-0608	23
268B0404	268B0404	3	2740402C	BPF21	21	2870612C	287-0612	23
268B0502	268B0502	3	2740404C	BPF22	21	2870812C	287-0812	23
268B0504	268B0504	3	2740406C	BPF23	21	2870812SS	287-0812SS	23
268B0602	268B0602	3	2740502C	BPF251	21	2870814C	287-0814	23
268B0604	268B0604	3	2740504C	BPF252	21	2871014C	287-1014	23
268B0606	268B0606	3	2740602C	BPF31	21	2880409C	288-0409	24
268B0806	268B0806	3	2740604C	BPF32	21	2880509C	288-0509	24
268B0808	268B0808	3	2740606C	BPF33	21	2880609C	288-0609	24
268B1008	268B1008	3	2740608C	BPF34	21	2880609SS	288-0609SS	24
268B1208	268B1208	3	2740612C	BPF36	21	2880809C	288-0809	24
268B1212	268B1212	3	2740804C	BPF42	21	2881217C	288-1217	24
270AT	270AT	19	2740806C	BPF43	21	2881217SS	288-1217SS	24
2710404C	271-0404	20	2740808C	BPF44	21	2881621C	288-1621	24

Industry Interchange Chart (cont)

This industry interchange chart is compiled of known popular Canadian part numbers, which are commonly used in the brass fitting industry. As there are numerous companies selling brass with 1000's of part numbers, we could not easily include them all, therefore this should only be considered a partial interchange listing.

If you can't locate the part that you require, please call our customer service at 877-963-4966

Industry part #	Dixon part #	Page #	Industry part #	Dixon part #	Page #	Industry part #	Dixon part #	Page #
2881621SS	288-1621SS	24	3060606C	306-0606	41	3750606C	RA3F3M	33
2890407C	289-0407	24	3060808C	306-0808	41	3750804C	RA4F2M	33
2890407CSAE	289-0407SAE	24	3061212C	306-1212	41	3750806C	RA4F3M	33
2890609C	289-0609	24	3220202C	322-0202	41	3750808C	RA4F4M	33
2890610CSAE	289-0609SAE	24	3220404C	322-0404	41	3751206C	RA6F3M	33
2890812C	289-0812	24	3220606C	322-0606	41	3751208C	RA6F4M	33
2890812CSAE	289-0812SAE	24	3220808C	322-0808	41	3751212C	RA6F6M	33
2891217C	289-1217	24	3221212C	322-1212	41	3770402C	RC2F1F	36
2900406C	290-0406	24	3240202C	324-0202	41	3770602C	RC3F1F	36
2900407C	290-0407	24	3240404C	324-0404	41	3770604C	RC3F2F	36
2900408C	290-0408	24	3240606C	324-0606	41	3770804C	RC4F2F	36
2900508C	290-0508	24	3240808C	324-0808	41	3770806C	RC4F3F	36
2900510C	290-0510	24	3241212C	324-1212	41	3771206C	RC6F3F	36
2900608C	290-0608	24	325-10D	268B1008	3	3771208C	RC6F4F	36
2900610C	290-0610	24	325-12D	268B1208	3	3790402C	HN2M1M	34
2900812C	290-0812	24	325-4A	268B0402	3	3790602C	HN3M1M	34
2901014C	290-1014	24	325-4B	268B0404	3	3790604C	HN3M2M	34
2920406C	292-0406	25	325-5A	268B0502	3	3790804C	HN4M2M	34
2920407C	292-0407	25	325-5B	268B0504	3	3790806C	HN4M3M	34
2920408C	292-0408	25	325-6A	268B0602	3	3791208C	HN6M4M	34
2920508C	292-0508	25	325-6B	268B0604	3	500QCF	DGH7C	30
2920608C	292-0608	25	325-6C	268B0606	3	500QCFV	DGH7CV	30
2920610C	292-0610	25	3260202C	326-0202	42	500QCK	DGH7	30
2920812C	292-0812	25	3260404C	326-0404	42	500QCKV	DGH7V	30
2940403C	294-0403	25	3260606C	326-0606	42	500QCM	DGH7P	30
2940404C	294-0404	25	3260808C	326-0808	42	5011202C	BA971	29
2940405C	294-0405	25	3261212C	326-1212	42	5011204C	BA972	29
2940606C	294-0606	25	3700202C	BCN12	34	5011206C	BA973	29
2940808C	294-0808	25	3700404C	BCN25	34	5011208C	BA974	29
2941010C	294-1010	25	3700606C	BCN37	34	5011208SS	RA974	29
2941212C	294-1212	25	3700808C	BCN50	34	5011212C	BA976	29
2960404C	BPM2	25	3701212C	BCN75	34	5011212SS	RA976	29
2960404SS	SSPM2	25	3701616C	BCN100	34	5021208C	BAS974	28
2960505C	BPM25	25	3710202C	BA1F1F	36	5021208SS	RAS974	28
2960606C	BPM3	25	3710404C	BA2F2F	36	5021212C	BAS976	28
2960606SS	SSPM3	25	3710606C	BA3F3F	36	5021212SS	RAS976	28
2960808C	BPM4	25	3710808C	BA4F4F	36	5031206C	BMA973	28
2960808SS	SSPM4	25	3711212C	BA6F6F	36	5031208C	BMA974	28
2961010C	BPM5	25	3730402C	HB1F2M	33	5031208SS	RMA974	28
2961212C	BPM6	25	3730602C	HB1F3M	33	5031212C	BMA976	28
2961616C	BPM8	25	3730604C	HB2F3M	33	5031212SS	RMA976	28
3020202C	EL1F1F	40	3730802C	HB1F4M	33	5041204C	504-1204	28
3020404C	EL2F2F	40	3730804C	HB2F4M	33	5041206C	504-1206	28
3020606C	EL3F3F	40	3730806C	HB3F4M	33	5041208C	504-1208	28
3020808C	EL4F4F	40	3731202C	HB1F6M	33	5041208SS	R504-1208	28
3021212C	EL6F6F	40	3731204C	HB2F6M	33	5041212C	504-1212	28
3040202C	SE1F1M	40	3731206C	HB3F6M	33	5041212SS	R504-1212	28
3040402C	SE2F1M	40	3731208C	HB4F6M	33	5061212C	BA977	28
3040404C	SE2F2M	40	3731604C	HB2F8M	33	5071204C	507-1204	30
3040604C	SE3F2M	40	3731606C	HB3F8M	33	5071206C	507-1206	30
3040606C	SE3F3M	40	3731608C	HB4F8M	33	5071208C	BA794	30
3040806C	SE4F3M	40	3731612C	HB6F8M	33	5071208SS	RA794	30
3040808C	SE4F4M	40	3750202C	RA1F1M	33	5071212C	BA796	30
3041208C	SE6F4M	40	3750402C	RA2F1M	33	5071212SS	RA796	30
3041212C	SE6F6M	40	3750404C	RA2F2M	33	5081206C	BA73	29
3060202C	306-0202	41	3750602C	RA3F1M	33	5081208C	BA74	29
3060404C	306-0404	41	3750604C	RA3F2M	33	5081208SS	RA74	29

Industry Interchange Chart (cont)

This industry interchange chart is compiled of known popular Canadian part numbers, which are commonly used in the brass fitting industry. As there are numerous companies selling brass with 1000's of part numbers, we could not easily include them all, therefore this should only be considered a partial interchange listing.

If you can't locate the part that you require, please call our customer service at 877-963-4966

Industry part #	Dixon part #	Page #	Industry part #	Dixon part #	Page #	Industry part #	Dixon part #	Page #
5081212SS	RA776	29	725-5B	BPN252	20	732-45	294-0405	25
5081216C	BA78	29	725-6A	BPN31	20	732-66	294-0606	25
5091212C	BA777	29	725-6B	BPN32	20	732-88	294-0808	25
5091212SS	RA777	29	725-6C	BPN33	20	735-1010	290-1014	24
5091612C	509-1612	29	725-6D	BPN34	20	735-43	290-0406	24
5131212C	GHC7	28	725-6E	BPN36	20	735-44	290-0407	24
5141212C	BA776	29	725-8B	BPN42	20	735-45	290-0408	24
5780808C	BM4	9	725-8C	BPN43	20	735-65	290-0608	24
5781010C	BM5	9	725-8D	BPN44	20	735-66	290-0610	24
5781212C	BM6	9	725-8E	BPN46	20	735-88	290-0812	24
5781616C	BM8	9	725SW-12E	271-1212	20	736-43	292-0406	25
5900612C	BCM73	26	725SW-4B	271-0404	20	736-44	292-0407	25
5900812C	BCM74	26	725SW-6B	271-0604	20	736-45	292-0408	25
5900812SS	SSCM74	26	725SW-6C	271-0606	20	736-65	292-0608	25
5901012C	BCM75	26	725SW-8C	271-0806	20	736-66	292-0610	25
5901012SS	SSCM75	26	725SW-8D	271-0808	20	736-88	292-0812	25
5901212C	BCM76	26	726-10D	BPF53	21	737-44	286-0407	23
5901212SS	SSCM76	26	726-12E	BPF66	21	737-45	286-0408	23
5901612C	BCM78	26	726-4A	BPF21	21	737-66	286-0609	23
5910612C	BCF73	26	726-4B	BPF22	21	737-88	286-0812	23
5910812C	BCF74	26	726-6B	BPF32	21	738-1010	287-1014	23
5910812SS	SSCF74	26	726-6C	BPF33	21	738-1212	288-1217	24
5911012C	BCF75	26	726-8C	BPF43	21	738-44	287-0407	23
5911012SS	SSCF75	26	726-8D	BPF44	21	738-45	287-0408	23
5911212C	BCF76	26	726-8E	BPF46	21	738-66	288-0609	24
5911212SS	SSCF76	26	727-1010	282-1014	22	738-88	287-0812	23
5911212W	DGHW7	30	727-44	282-0407	22	739-12E	273-1212	21
5911612C	BCF78	26	727-45	282-0408	22	739-4A	273-0402	21
5920606K	BC73	26	727-66	282-0610	22	739-4B	273-0404	21
5920808K	BC74	26	727-88	282-0812	22	739-6A	273-0602	21
5920808KSS	SSC74	26	728-1010	287-1014	23	739-6B	273-0604	21
5921010K	BC75	26	728-1212	284-1217	23	739-6C	273-0606	21
5921010KSS	SSC75	26	728-44	287-0407	23	739-8C	273-0806	21
5921212K	BC76	26	728-45	287-0408	23	739-8D	273-0808	21
5921212KSS	SSC76	26	728-66	284-0610	23	750-104	see page	17
5921612K	BC78	26	728-68	287-0612	23	750-105	see page	17
5930812C	BLS417	27	728-810	287-0814	23	750-106	see page	17
5931012C	BLS517	26	728-88	287-0812	23	750-115	see page	17
5931212C	BLS617	27	729-10	BPM5	25	750-116	see page	17
5931616C	BLS818	27	729-12	BPM6	25	750-126	see page	17
5940812C	BLS447	27	729-4	BPM2	25	750-148	see page	17
5941012C	BLS547	27	729-5	BPM25	25	750-158	see page	17
5941212C	BLS647	27	729-6	BPM3	25	750-168	see page	17
5941616C	BLS848	27	729-8	BPM4	25	750-84	see page	17
5950808K	BLS407	27	730-4A	280-0402	22	750-94	see page	17
5951010K	BLS507	27	730-4B	280-0404	22	750-95	see page	17
5951212K	BLS607	27	730-6B	280-0604	22	751-4A	see page	17
5951616K	BLS808	27	730-6C	280-0606	22	751-4B	see page	17
725-10C	BPN53	20	731-12E	BPFS66	22	751-4C	see page	17
725-10D	BPN54	20	731-4A	BPFS21	22	751-5B	see page	17
725-10E	BPN56	20	731-4B	BPFS22	22	751-5C	see page	17
725-12D	BPN64	20	731-6B	BPFS32	22	751-6B	see page	17
725-12E	BPN66	20	731-6C	BPFS33	22	751-6C	see page	17
725-4A	BPN21	20	731-8D	BPFS44	22	751-6D	see page	17
725-4B	BPN22	20	732-1010	294-1010	25	751-8B	see page	17
725-4C	BPN23	20	732-43	294-0403	25	751-8C	see page	17
725-5A	BPN251	20	732-44	294-0404	25	751-8D	see page	17

Industry Interchange Chart (cont)

This industry interchange chart is compiled of known popular Canadian part numbers, which are commonly used in the brass fitting industry. As there are numerous companies selling brass with 1000's of part numbers, we could not easily include them all, therefore this should only be considered a partial interchange listing.

If you can't locate the part that you require, please call our customer service at 877-963-4966

Industry part #	Dixon part #	Page #	Industry part #	Dixon part #	Page #	Industry part #	Dixon part #	Page #
752-4B	see page	18	D109-C	211-0600	39	D120-AA	RA1F1M	33
752-4C	see page	18	D109-D	211-0800	39	D120-BA	RA2F1M	33
752-5B	see page	18	D109-E	211-1200	39	D120-BB	RA2F2M	33
752-6B	see page	18	D110-BA	HB1F2M	33	D120-CA	RA3F1M	33
752-6C	see page	18	D110-CA	HB1F3M	33	D120-CB	RA3F2M	33
752-8D	see page	18	D110-CB	HB1F4M	33	D120-CC	RA3F3M	33
99-A	169-0202	40	D110-DA	HB1F6M	33	D120-DB	RA4F2M	33
99-B	169-0404	40	D110-DB	HB2F3M	33	D120-DC	RA4F3M	33
99-C	169-0606	40	D110-DC	HB2F4M	33	D120-DD	RA4F4M	33
99-D	169-0808	40	D110-EA	HB2F6M	33	D120-ED	RA6F4M	33
99HB-4	177-0404	10	D110-EB	HB2F8M	33	D121-A	HHP1M	39
99HB-5	177-0505	10	D110-EC	HB3F4M	33	D121-B	HHP2M	39
99HB-6	177-0606	10	D110-ED	HB3F6M	33	D121-C	HHP3M	39
99HB-8	177-0808	10	D110-FB	HB3F8M	33	D121-D	HHP4M	39
C100-E	EL6F6F	40	D110-FC	HB4F6M	33	D121-E	HHP6M	39
C101-E	322-1212	41	D110-FD	HB4F8M	33	D121-F	HHP8M	39
C102-D	228-0808	42	D110-FE	HB6F8M	33	D122-A	BCN12	34
C102-E	228-1212	42	D112-A	165-0202	34	D122-B	BCN25	34
C118-E	219-1200	39	D112-B	165-0404	34	D122-BA	HN2M1M	34
D100-A	EL1F1F	40	D112-C	165-0606	34	D122-C	BCN37	34
D100-B	EL2F2F	40	D112-D	165-0808	34	D122-CA	HN3M1M	34
D100-C	EL3F3F	40	D112-E	165-1212	34	D122-CB	HN3M2M	34
D100-D	EL4F4F	40	D113-A1 1/2	166-0215	35	D122-D	BCN50	34
D100-E	EL6F6F	40	D113-A2	166-0220	35	D122-DB	HN4M2M	34
D101-A	322-0202	41	D113-A2 1/2	166-0225	35	D122-DC	HN4M3M	34
D101-B	322-0404	41	D113-A3	166-0230	35	D122-E	BCN75	34
D101-C	322-0606	41	D113-B1 1/2	166-0415	35	D122-ED	HN6M4M	34
D101-D	322-0808	41	D113-B2	166-0420	35	D122-F	BCN100	34
D101-E	322-1212	41	D113-B2 1/2	166-0425	35	D124-A	306-0202	41
D102-A	228-0202	42	D113-C2	166-0615	35	D124-B	306-0404	41
D102-B	228-0404	42	D113-C2 1/2	166-0620	35	D124-C	306-0606	41
D102-C	228-0606	42	D113-C3	166-0625	35	D124-D	306-0808	41
D102-D	228-0808	42	D113-D1 1/2	166-0815	35	D125-10C	BN53	4
D103-A	BA1F1F	36	D113-D2	166-0820	35	D125-10D	BN54	4
D103-B	BA2F2F	36	D113-D2 1/2	166-0825	35	D125-10E	BN56	4
D103-C	BA3F3F	36	D115-A	SE1F1M	40	D125-12D	BN64	4
D103-D	BA4F4F	36	D115-B	SE2F2M	40	D125-12E	BN66	4
D103-E	BA6F6F	36	D115-C	SE3F3M	40	D125-16E	BN86	4
D104-B	TUN2F	36	D115-D	SE4F4M	40	D125-16F	BN88	4
D104-C	TUN3F	36	D115-E	SE6F6M	40	D125-2A	BN11	4
D104-D	TUN4F	36	D116-A	SE1F1M	40	D125-2B	BN122	4
D104-E	TUN5F	36	D116-B	SE2F2M	40	D125-3A	BN151	4
D106-A	324-0202	41	D116-C	SE3F3M	40	D125-3B	BN152	4
D106-B	324-0404	41	D116-D	SE4F4M	40	D125-4A	BN21	4
D106-C	324-0606	41	D116-E	SE6F6M	40	D125-4B	BN22	4
D107-A	326-0202	42	D118-A	219-0200	39	D125-4C	BN23	4
D107-B	326-0404	42	D118-B	219-0400	39	D125-4D	BN24	4
D107-C	326-0606	42	D118-C	219-0600	39	D125-5A	BN251	4
D107-D	326-0808	42	D118-D	219-0800	39	D125-5B	BN252	4
D107-E	326-1212	42	D118-E	219-1200	39	D125-5C	BN253	4
D108-A	213-0200	38	D119-BA	RC2F1F	36	D125-6A	BN31	4
D108-B	213-0400	38	D119-CA	RC3F1F	36	D125-6B	BN32	4
D108-C	213-0600	38	D119-CB	RC3F2F	36	D125-6C	BN33	4
D108-D	213-0800	38	D119-DB	RC4F2F	36	D125-6D	BN34	4
D108-E	213-1200	38	D119-DC	RC4F3F	36	D125-6E	BN36	4
D109-A	211-0200	39	D119-EC	RC6F3F	36	D125-8B	BN42	4
D109-B	211-0400	39	D119-ED	RC6F4F	36	D125-8C	BN43	4

Industry Interchange Chart (cont)

This industry interchange chart is compiled of known popular Canadian part numbers, which are commonly used in the brass fitting industry. As there are numerous companies selling brass with 1000's of part numbers, we could not easily include them all, therefore this should only be considered a partial interchange listing.

If you can't locate the part that you require, please call our customer service at 877-963-4966

Industry part #	Dixon part #	Page #	Industry part #	Dixon part #	Page #	Industry part #	Dixon part #	Page #
D125-8D	BN44	4	D130-4C	126-0406	6	D139-8B	EL4H2M	7
D125-8E	BN46	4	D130-5B	126-0504	6	D139-8C	EL4H3M	7
D125SW-12E	103-1212	4	D130-6B	126-0604	6	D139-8D	EL4H4M	7
D125SW-4B	103-0404	4	D130-6C	126-0606	6	D140-4A	139-0402	8
D125SW-6B	103-0604	4	D130-6D	126-0608	6	D140-4B	139-0404	8
D125SW-6C	103-0606	4	D130-8C	126-0806	6	D140-6A	139-0602	8
D125SW-8C	103-0806	4	D130-8D	126-0808	6	D140-6B	139-0604	8
D125SW-8D	103-0808	4	D131-12E	BFS66	6	D140-6C	139-0606	8
D126-12E	BF66	5	D131-2A	BFS11	6	D140-8B	139-0804	8
D126-16E	BF86	5	D131-3A	BFS151	6	D143-10D	268B1008	3
D126-2A	BF11	5	D131-3B	BFS152	6	D143-12D	268B1208	3
D126-2B	BF12	5	D131-4A	BFS21	6	D143-6C	268B0606	3
D126-3A	BF151	5	D131-4B	BFS22	6	D143-8C	268B0806	3
D126-3B	BF152	5	D131-4C	BFS23	6	D193-10	BCM75	26
D126-4A	BF21	5	D131-5B	BFS252	6	D193-12	BCM76	26
D126-4B	BF22	5	D131-6B	BFS32	6	D193-6	BCM73	26
D126-4C	BF23	5	D131-6C	BFS33	6	D193-8	BCM74	26
D126-5A	BF251	5	D131-6D	BFS34	6	D193L-10	BCM75	26
D126-5B	BF252	5	D131-8C	BFS43	6	D193L-12	BCM76	26
D126-5C	BF253	5	D131-8D	BFS44	6	D193L-8	BCM74	26
D126-6A	BF31	5	D132-3R	OA60	12	D194-B	504-1204	28
D126-6B	BF32	5	D132-4R	OA61	12	D194-C	504-1206	28
D126-6C	BF33	5	D132-5R	OA62	12	D194-D	504-1208	28
D126-6D	BF34	5	D132-6R	OA63	12	D195-10	BCF75	26
D126-8B	BF42	5	D133-3L	OA70	11	D195-12	BCF76	26
D126-8C	BF43	5	D133-4L	OA71	11	D195-6	BCF73	26
D126-8D	BF44	5	D133-5L	OA72	11	D195-8	BCF74	26
D127-3X4	142-0307	8	D133-6L	OA73	11	D195L-10	BCF75	26
D127-4X4	142-0407	8	D134-AA	BSM11	37	D195L-12	BCF76	26
D127-4X6	142-0410	8	D134-BA	BSM21	37	D195L-8	BCF74	26
D127-5X5	142-0508	8	D134-BB	BSM22	37	D196-C	BA73	29
D127-6X6	142-0610	8	D134-CB	BSM32	37	D196-D	BA74	29
D127-6X8	142-0612	8	D134-CC	BSM33	37	D196-E	BA776	29
D127-8X8	142-0812	8	D134-CD	BSM34	37	D196-W	BA777	29
D128-12X12	144-1217	9	D134-DC	BSM43	37	D197-B	507-1204	30
D128-3X4	143-0307	8	D134-DD	BSM44	37	D197-C	507-1206	30
D128-4X4	143-0407	8	D134-EE	BSM66	37	D197-D	BA794	29
D128-4X5	143-0408	8	D134-ST-BB	176-0404	37	D197-E	BA796	29
D128-4X6	144-0410	9	D134-ST-CC	176-0606	37	D198-A	BA971	29
D128-5X5	143-0508	8	D135-LB	158-0904	11	D198-B	BA972	29
D128-5X6	144-0510	9	D135-LC	158-0906	11	D198-C	BA973	29
D128-6X6	144-0610	9	D135-RB	156-0904	12	D198-D	BA974	29
D128-6X8	143-0612	8	D135-RC	156-0906	12	D198-E	BA976	29
D128-8X10	143-0814	8	D136-L	OA52	11	D199-D	BMA974	28
D128-8X8	143-0812	8	D136-R	OA50	12	D199-E	BMA976	28
D129-10	BM5	9	D139-10C	EL5H3M	7	D199S-D	BAS974	28
D129-12	BM6	9	D139-10D	EL5H4M	7	D199S-E	BAS976	28
D129-3	BM15	9	D139-3A	EL15H1M	7	D200-W	GHC7	28
D129-4	BM2	9	D139-4A	EL2H1M	7	D203-W	BA977	28
D129-5	BM25	9	D139-4B	EL2H2M	7	D203-Y	500YC	32
D129-6	BM3	9	D139-4C	EL2H3M	7	D204-12	TRW7	30
D129-8	BM4	9	D139-5A	EL25H1M	7	D361-10D	BPF53	21
D130-2A	126-0202	6	D139-5B	EL25H2M	7	D361-12E	BPF66	21
D130-3A	126-0302	6	D139-6A	EL3H1M	7	D361-4A	BPF21	21
D130-3B	126-0304	6	D139-6B	EL3H2M	7	D361-4B	BPF22	21
D130-4A	126-0402	6	D139-6C	EL3H3M	7	D361-6B	BPF32	21
D130-4B	126-0404	6	D139-6D	EL3H4M	7	D361-6C	BPF33	21

Industry Interchange Chart (cont)

This industry interchange chart is compiled of known popular Canadian part numbers, which are commonly used in the brass fitting industry. As there are numerous companies selling brass with 1000's of part numbers, we could not easily include them all, therefore this should only be considered a partial interchange listing.

If you can't locate the part that you require, please call our customer service at 877-963-4966

Industry part #	Dixon part #	Page #	Industry part #	Dixon part #	Page #	Industry part #	Dixon part #	Page #
D361-8C	BPF43	21	D371-66	286-0609	23	DC103-D	BA4F4F	36
D361-8D	BPF44	21	D379-1010	BPM5	25	DC103-E	BA6F6F	36
D362-10D	BPN54	20	D379-1212	BPM6	25	DC104-B	TUN2F	36
D362-10E	BPN56	20	D379-44	BPM2	25	DC104-C	TUN3F	36
D362-12D	BPN64	20	D379-55	BPM25	25	DC104-D	TUN4F	36
D362-12E	BPN66	20	D379-66	BPM3	25	DC104-E	TUN5F	36
D362-4A	BPN21	20	D379-88	BPM4	25	DC104-F	TUN6F	36
D362-4B	BPN22	20	D750-10-4	see page	17	DC109-D	211-0800	39
D362-4C	BPN23	20	D750-10-5	see page	17	DC109-E	211-1200	39
D362-5A	BPN251	20	D750-10-6	see page	17	DC110-BA	HB1F2M	33
D362-5B	BPN252	20	D750-11-5	see page	17	DC110-CA	HB1F3M	33
D362-6A	BPN31	20	D750-11-6	see page	17	DC110-CB	HB1F4M	33
D362-6B	BPN32	20	D750-12-6	see page	17	DC110-DA	HB1F6M	33
D362-6C	BPN33	20	D750-14-8	see page	17	DC110-DB	HB2F3M	33
D362-6D	BPN34	20	D750-15-8	see page	17	DC110-DC	HB2F4M	33
D362-8C	BPN43	20	D750-16-8	see page	17	DC110-EA	HB2F6M	33
D362-8D	BPN44	20	D750-8-4	see page	17	DC110-EB	HB2F8M	33
D363-44	282-0407	22	D750-9-4	see page	17	DC110-EC	HB3F4M	33
D363-45	282-0408	22	D750-9-5	see page	17	DC110-ED	HB3F6M	33
D363-66	282-0610	22	D751-4A	see page	17	DC110-FB	HB3F8M	33
D363-88	282-0812	22	D751-4B	see page	17	DC110-FC	HB4F6M	33
D364/5-1010	287-1014	23	D751-4C	see page	17	DC110-FD	HB4F8M	33
D364/5-44	287-0407	23	D751-5B	see page	17	DC110-FE	HB6F8M	33
D364/5-45	287-0408	23	D751-6B	see page	17	DC116-A	SE1F1M	40
D364/5-68	287-0612	23	D751-6C	see page	17	DC116-B	SE2F2M	40
D364/5-88	287-0812	23	D751-6D	see page	17	DC116-C	SE3F3M	40
D364-1212	284-1217	23	D751-8B	see page	17	DC116-D	SE4F4M	40
D364-46	284-0410	23	D751-8C	see page	17	DC116-E	SE6F6M	40
D364-56	284-0510	23	D751-8D	see page	17	DC118-D	219-0800	39
D364-66	284-0610	23	D752-4B	see page	18	DC118-E	219-1200	39
D365-1212	288-1217	24	D752-4C	see page	18	DC119-BA	RC2F1F	36
D365-65	288-0509	24	D752-5B	see page	18	DC119-CA	RC3F1F	36
D365-66	288-0609	24	D752-6B	see page	18	DC119-CB	RC3F2F	36
D366-43	292-0406	25	D752-6C	see page	18	DC119-DB	RC4F2F	36
D366-44	292-0407	25	D752-8D	see page	18	DC119-DC	RC4F3F	36
D366-45	292-0408	25	D99-A	169-0202	40	DC119-EC	RC6F3F	36
D366-65	292-0608	25	D99-B	169-0404	40	DC119-ED	RC6F4F	36
D366-66	292-0610	25	D99-C	169-0606	40	DC120-CC	RA3F3M	33
D366-88	292-0812	25	D99-D	169-0808	40	DC120-DD	RA4F4M	33
D367-1010	290-1014	24	DC100-A	EL1F1F	40	DC120-EE	RA6F6M	33
D367-43	290-0406	24	DC100-B	EL2F2F	40	DC124-A	306-0202	41
D367-44	290-0407	24	DC100-C	EL3F3F	40	DC124-B	306-0404	41
D367-45	290-0408	24	DC100-D	EL4F4F	40	DC124-C	306-0606	41
D367-55	290-0508	24	DC100-E	EL6F6F	40	DC124-D	306-0808	41
D367-65	290-0608	24	DC101-A	322-0202	41	DC124-E	306-1212	41
D367-66	290-0610	24	DC101-B	322-0404	41	DF100-A	EL1F1F	40
D367-88	290-0812	24	DC101-C	322-0606	41	DF100-B	EL2F2F	40
D368-1010	294-1010	25	DC101-D	322-0808	41	DF100-C	EL3F3F	40
D368-43	294-0403	25	DC101-E	322-1212	41	DF100-D	EL4F4F	40
D368-44	294-0404	25	DC102-A	228-0202	42	DF100-E	EL6F6F	40
D368-45	294-0405	25	DC102-B	228-0404	42	DF101-A	322-0202	41
D368-66	294-0606	25	DC102-C	228-0606	42	DF101-B	322-0404	41
D368-88	294-0808	25	DC102-D	228-0808	42	DF101-C	322-0606	41
D369-6A	273-0602	21	DC102-E	228-1212	42	DF101-D	322-0808	41
D371-1212	286-1217	23	DC103-A	BA1F1F	36	DF101-E	322-1212	41
D371-44	286-0407	23	DC103-B	BA2F2F	36	DF102-A	228-0202	42
D371-46	286-0409	23	DC103-C	BA3F3F	36	DF102-B	228-0404	42

Industry Interchange Chart (cont)

This industry interchange chart is compiled of known popular Canadian part numbers, which are commonly used in the brass fitting industry. As there are numerous companies selling brass with 1000's of part numbers, we could not easily include them all, therefore this should only be considered a partial interchange listing.

If you can't locate the part that you require, please call our customer service at 877-963-4966

Industry part #	Dixon part #	Page #	Industry part #	Dixon part #	Page #
DF102-C	228-0606	42	SW125-8D	103-0808	4
DF102-D	228-0808	42	X100-A	EL1F1F	40
DF103-A	BA1F1F	36	X100-B	EL2F2F	40
DF103-B	BA2F2F	36	X100-C	EL3F3F	40
DF103-C	BA3F3F	36	X100-D	EL4F4F	40
DF103-D	BA4F4F	36	X101-A	322-0202	41
DF103-E	BA6F6F	36	X101-B	322-0404	41
DF106-D	324-0808	41	X101-C	322-0606	41
DF107-C	326-0606	42	X101-D	322-0808	41
DS1125-4A	268B0402	3	X102-A	228-0202	42
FO100-A	EL1F1F	40	X102-B	228-0404	42
FO100-B	EL2F2F	40	X102-C	228-0606	42
FO100-C	EL3F3F	40	X102-D	228-0808	42
FO100-D	EL4F4F	40	X106-A	324-0202	41
FO100-E	EL6F6F	40	X106-B	324-0404	41
FO101-A	322-0202	41	X106-C	324-0606	41
FO101-B	322-0404	41	X107-A	326-0202	42
FO101-C	322-0606	41	X107-B	326-0404	42
FO101-D	322-0808	41	X107-C	326-0606	42
FO101-E	322-1212	41	X107-D	326-0808	42
FO102-A	228-0202	42	X107-E	326-1212	42
FO102-B	228-0404	42	X115-A	SE1F1M	40
FO102-C	228-0606	42	X115-B	SE2F2M	40
FO102-D	228-0808	42	X115-BA	SE2F1M	40
FO106-A	324-0202	41	X115-C	SE3F3M	40
FO106-B	324-0404	41	X115-D	SE4F4M	40
FO106-C	324-0606	41	X115-DC	SE4F3M	40
FO106-D	324-0808	41	X115-E	SE6F6M	40
FO107-A	326-0202	42	X124-A	306-0202	41
FO107-B	326-0404	42	X124-B	306-0404	41
FO107-C	326-0606	42	X124-C	306-0606	41
FO107-D	326-0808	42	X124-D	306-0808	41
FO124-A	306-0202	41	X124-E	306-1212	41
FO124-B	306-0404	41			
FO124-C	306-0606	41			
GHW	TVW7	30			
GHW-12	TVW7	30			
GHW-12R	TRW7	30			
GHW-FLAT	TVW7	30			
QD-BGHC12-12F	DGH7C	30			
QD-BGHN12-12M	DGH7P	30			
QD-BVGHC12-12F	DGH7CV	30			
QD-WHCF	DGH7C	30			
QD-WHNM	DGH7P	30			
QD-WHVCF	DGH7CV	30			
S1125-12D	268B1208	3			
S1125-12E	268B1212	3			
S1125-4A	268B0402	3			
S1125-4B	268B0404	3			
S1125-6B	268B0604	3			
S1125-6C	268B0606	3			
S1125-8C	268B0806	3			
S1125-8D	268B0808	3			
SW125-4B	103-0404	4			
SW125-6B	103-0604	4			
SW125-6C	103-0606	4			

Dixon Part Number Index

In the following index, a "•" is used to represent a variable. Therefore, to find 103-0404 or 103-0606, look for 103-••••

Dixon part #	Page #	Dixon part #	Page #	Dixon part #	Page #	Dixon part #	Page #	Dixon part #	Page #
103-••••	4	280-••••	22	BA•F•F	36	BPF•••	21	HA25WCT76	32
105-••••	5	282-••••	22	BA1616	38	BPFS••	22	HB•F•M	33
126-••••	6	284-••••	23	BA77•	29	BPM•	25	HHP•M	39
134-••••	7	286-••••	23	BA79•	30	BPM••	25	HN••SS	34
139-••••	8	287-••••	23	BA97•	29	BPN••	20	HN•M•M	34
142-••••	8	287-••••SS	23	BA977	28	BPN•••	20	HN100SS	34
143-••••	8	288-••••	24	BAS•••	28	BR••••SS	36	OA••	11
144-••••	9	288-••••SS	24	BC••	26	BSM••	37	R504-••••	28
145-••••	9	289-••••	24	BCF••	26	CN••SS	34	RA••	29
156-••••	12	289-••••SAE	24	BCM••	26	CN••X•B	35	RA•F•M	33
158-••••	11	290-••••	24	BCN••	34	DGH7	30	RA77•	29
165-••••	34	292-••••	25	BCN•••	34	DGH7C	30	RA79•	30
166-••••	35	294-••••	25	BF••	5	DGH7CV	30	RA97•	29
169-••••	40	306-••••	41	BF•••	5	DGH7P	30	RAS•••	28
174-••••	37	322-••••	41	BFL•••	13	DGH7V	30	RC•F•F	36
1765A	14	324-••••	41	BFM•••	13	DGHW7	30	RHC••SS	36
177-••••	10	326-••••	42	BFMW••••	13	EL••••SS	40	RHN••••SS	34
179-••••	10	500-GH4V	32	BFO•••	14	EL••H•M	7	RMA•••	28
185-••••	18	500GHV	32	BFS••	6	EL•F•F	40	RN••	4
187-••••	16	500GHY	32	BFS•••	6	EL•H•M	7	RN••RU••	17
207-BH•	38	504-••••	28	BFW••••	13	FT••SS	41	SE••••SS	40
207-BH12	38	507-••••	30	BLS•••	27	GHC7	28	SE•F•M	40
207-BH4S	38	509-1612	29	BM•	9	GHGN	32	SSC••	26
211-••••	39	5111A	14	BM••	9	GHV	32	SSCF••	26
211-••••	39	855	15	BM•••	9	GHVEZK	32	SSCM••	26
213-••••	38	855A	15	BMA•••	28	GHY	32	SSPM•	25
228-••••	42	856-•	15	BN••	4	GHYV	32	TRW7	30
268B0•••	3	856-••	15	BN•••	4	HA2576	32	TUN•F	36
270AT	19	860	15	BN•••RU••	17	HA25BA76	32	TUN•SS	36
271-••••	20	861-••	15	BN••RU••	17	HA25CSA76	32	TVS7-30	30
273-••••	21	BA••	29	BPF••	21	HA25QST76	32	TVW7	30

Limited Warranty

DIXON GROUP CANADA LIMITED (herein called "Dixon") warrants the products described herein, and manufactured by Dixon to be free from defects in material and workmanship for a period of one (1) year from date of shipment by Dixon under normal use and service; a period of three (3) years from date of shipment for FloTech products. It's sole obligation under this warranty being limited to repairing or replacing, as hereinafter provided, at its option any product found to Dixon's satisfaction to be defective upon examination by it, provided that such product shall be returned for inspection to Dixon's factory within three (3) months after discovery of the defect. The repair or replacement of defective products will be made without charge for parts or labor. This warranty shall not apply to:

(a) parts or products not manufactured by Dixon, the warranty of such items being limited to the actual warranty extended to Dixon by its supplier;

(b) any product that has been subject to abuse, negligence, accident, or misapplication;

(c) any product altered or repaired by others than Dixon; and (d) to normal maintenance services and the replacement of service items (such as washers, gaskets and lubricants) made in connection with such services. To the extent permitted by law, this limited warranty shall extend only to the buyer and any other person reasonably expected to use or consume the goods who is injured in person by any breach of the warranty. No action may be brought against Dixon for an alleged breach of warranty unless such action is instituted within one (1) year from the date the cause of action accrues. This limited warranty shall be construed and enforced to the fullest extent allowable by applicable law.

OTHER THAN THE OBLIGATION OF DIXON SET FORTH HEREIN, DIXON DISCLAIMS ALL WARRANTIES, EXPRESS OR IMPLIED, INCLUDING BUT NOT LIMITED TO ANY IMPLIED WARRANTIES OF MERCHANTABILITY OR FITNESS FOR A PARTICULAR PURPOSE, AND ANY OTHER OBLIGATION OR LIABILITY. THE FOREGOING CONSTITUTES DIXON'S SOLE OBLIGATION WITH RESPECT TO DAMAGES, WHETHER DIRECT, INCIDENTAL OR CONSEQUENTIAL, RESULTING FROM THE USE OR PERFORMANCE OF THE PRODUCT.

Atlanta, GA
518-725-0998
101 T.D.K.Blvd.Suite A
Peach tree City, GA 30269
Fax:518-725-8542

Charlotte, NC
704-376-5755
332-B Atando Avenue
Charlotte, NC 28206
Fax: 704-376-1557

Chestertown, MD
410-778-2002
800 High Street,
Chestertown, MD 21620
Fax: 410-778-4702

Chicago, IL
630-323-4442
40 Chestnut Avenue
Westmont, IL 60559
Fax:630-323-4120

Cleveland, OH
330-425-3000
1900 Enterprise Parkway
Twinsburg, OH 44087
Fax:330-425-1527

Gloversville, NY
770-486-9619
178A Corporate Drive
Gloversville, NY 12078
Fax:770-486-9813

Houston, TX
713-678-4291
6525 Homestead Road
Houston, TX 77028
Fax: 713-678-8105

Kansas City, MO
816-241-7111
1814 N. Corrington
Kansas City, MO 64120
Fax:816-241-7121

Los Angeles, CA
909-605-6400
1578 Archibald Avenue
Ontario, CA 91761
Fax:909-605-6200

Portland, OR
503-289-0400
2642 North Marine Drive
Portland, OR 97217
Fax:503-289-0600

Salt Lake City, UT
801-972-1180
McGillis Ind.Pk.Bldg, #4
1972 South 4370 West
Salt Lake City, UT 84104
Fax: 801-972-8063

Tampa, FL
813-247-3500
9410E. Broadway
Tamp, FL 33619
Fax: 813-247-7910

Wingfield, Australia
61-8-8202-6000
Fax:61-8-8202-6099

Preston, England
44-1-77-232-3529
Fax:44-1-77-231-4664

**Troisdorf-Spich,
Germany**
49-2241-84406-0
Fax:49-2241-8440679

Monterrey, Mexico
52-81-8354-5649
Fax: 52-81-8354-8197

**In Canada:
Dixon Group Canada Limited**

Customer Service: 877-963-4966

2315 Bowman Street
Innisfil, Ontario L9S 3V6
Customer Service: 705-436-1125 • 866-436-1125
Fax: 705-436-6251 • 877-436-6251

536 Av Lepine
Dorval Quebec H9P 2V6
Customer Service: 514-422-9292 • 866-349-6644
Fax:514-422-0166 • 866-422-0166

7011 – 68 Avenue
Edmonton Alberta T6B 3E3
Customer Service: 780-469-5444 • 866-469-5444
Fax:780-463-9205 • 877-463-9205

www.dixongroupcanada.com



The Right Connection™

Through its divisions and affiliated companies, Dixon is recognized as the premier manufacturer and supplier of hose fittings and accessories spanning a wide range of industrial uses. Dixon's reach includes products for food, dairy processing, beverage and brewery, mobile tankers, mining, construction, chemical processing, petroleum, oilfields, refining, nuclear and manufacturing