

Fire Threads

Within North America there are many regional fire threads, the most popular being the "NST" (or "NH") thread, which is the predominant USA fire thread. NST thread is sometimes used in Canada especially in sizes 3" and larger,

Within Canada the most common threads used for Fire applications are:

- 1", 1½" & 2" sizes use NPS (National Pipe Straight) thread.
- 2½" each region uses different threads, please see the table below. ***
- 3" and larger NST thread is often used.

Before ordering, please confirm the type of thread required. Thread requirements change by region.

2½" Canadian Regional Fire Threads

*** Dixon Thread Designation	Regional Designation	Region Normally Used	OD of Male Thread	Threads per inch
BA	AMA & BCT*	British Columbia & Alberta	2.990	8
WCT	WCT	Saskatchewan & Manitoba	3.250	6
CSA	CSA	Ontario	3.125	5
QST	QST & QMT	Quebec	3.031	7
NS1	NS1	Nova Scotia	3.234	5
F	NST (NH)	USA	3.069	7.5

* BA (or BAT) Threads are designed to connect with both BCT and AMA fittings. (Listed are the more popular thread types, other threads types are available, please contact Dixon for more information.)

Note:

- Other styles of fittings and sizes are also available
- Not all configurations shown are stocked.
- Some configurations may require minimum order quantities, contact Dixon for more information.

Dixon has a "**Special Thread Program**" for Brass adapters, which enables us to offer a one week production time* for most brass fire fittings with any regional fire thread. (*One week production time starts after receipt of the order.) Parts are produced in our Dixon Powhatan factory in Virginia, let us know whether you want the parts shipped directly to you from the Virginia factory. (Freight collect via the carrier of your choice), or if you want the parts transferred to your closest Dixon Canada warehouse for a local shipment to you.

The fittings shown in this catalogue have various fire hose threads, plus NPT (National Pipe Taper) and NPS (National Pipe Straight) threads.

Please keep in mind the male NPT is compatible with both female NPT, and all common variants of Female NPS (National Pipe Straight (NPS, NPSH, NPSM). When sealing a male taper thread (NPT) with female straight thread (NPS), the male taper thread will thread all the way into the female straight thread, and seal on the gasket at the base of the female straight thread.

Flat Seal Coupling Assemblies

Flat seal couplings are for lay flat hose and single jacket fire hose with a wall thickness between 5/64" and 3/16". Flat seal couplings are designed for use with flat seal clamps only. NPSM and NST coupling gaskets are available on page 289. Note: Torque values for clamps are based on dry bolts. The use of lubricants on bolts will adversely effect clamp performance.

SAFETY
ALERT

Complete
Price includes clamps



Female
Price includes clamp



Male
Price includes clamp



Aluminum

Aluminum with brass swivel nut
NPSM

Size	Part #
1½"	FS150
2½"	FS250

Aluminum with brass swivel nut
NPSM

Size	Part #
1½"	FSF150
2½"	FSF250

Aluminum
NPSM

Size	Part #
1½"	FSM150
2½"	FSM250

Aluminum with brass swivel nut
NST (NH)

Size	Part #
1½"	FS150F
2½"	FS250F

Aluminum with brass swivel nut
NST (NH)

Size	Part #
1½"	FSF150F
2½"	FSF250F

Aluminum
NST (NH)

Size	Part #
1½"	FSM150F
2½"	FSM250F

Maximum recommended torque 40 ft./lbs.

Brass

Brass with brass swivel nut
NPSM

Size	Part #
1½"	BFS150
2½"	BFS250

Brass with brass swivel nut
NPSM

Size	Part #
1½"	BFSF150
2½"	BFSF250

Brass
NPSM

Size	Part #
1½"	BFSM150
2½"	BFSM250

Brass with brass swivel nut
NST (NH)

Size	Part #
1½"	BFS150F
2½"	BFS250F

Brass with brass swivel nut
NST (NH)

Size	Part #
1½"	BFSF150F
2½"	BFSF250F

Brass
NST (NH)

Size	Part #
1½"	BFSM150F
2½"	BFSM250F

Nuts and bolts are 316 stainless steel. Maximum recommended torque 20 ft./lbs.



Aluminum NPT

Size	Part #
1½"	FSM150T
2½"	FSM250T
4"	FSM400T¹



Flat Seal Gaskets

• Buna

Size	Part #
1½"	FSG150
2½"	FSG250
3"	FSG300
4"	FSG400

¹ 4" does not have hex

Items will be discontinued as stock is depleted.

Expansion Ring Fire Hose Couplings

Complete Set - Hardcoated finish



Aluminum Rocker Lug **

- Special tooling is required to attach these couplings to hose (see page 632 for machine)
- All couplings come complete with expansion rings, swivel and tail washers.

** 3 rocker lugs on male and female

Single Jacket

Size	Thread	Bowl	Part #
1"	NPSH	1-1/4"	S10125
1½"	NPSH	1-¾"	S16175
1½"	NPSH	1-11/16"	S16168
1½"	NPSH	1-13/16"	S16181
2"	NPSH	2-1/4"	S20225
2"	NPSH	2-3/8"	S20375
2½"	NPSH	2-13/16"	S26281
1½"	NST (NH)	1-11/16"	S16168F
1½"	NST (NH)	1-¾"	S16175F
1½"	NST (NH)	1-13/16"	S16181F
2½"	***	2-11/16"	S26268***
2½"	***	2-13/16"	S26281***

Brass Expansion fittings with Pin or Rocker lugs are available

Note:*** See page 629 for thread designation

Double Jacket

Size	Thread	Bowl	Part #
1½"	NPSH	1-13/16"	D16181
1½"	NPSH	1-15/16"	D16193
1½"	NPSH	2-1/16"	D16206
2"	NPSH	2-5/16"	D20231
2½"	NPSH	3"	D263
1½"	NST (NH)	1-13/16"	D16181F
1½"	NST (NH)	1-15/16"	D16193F
1½"	NST (NH)	2-1/16"	D16206F
2½"	***	2-7/8"	D26287***
2½"	***	3"	D263***

Note: *** See Page 629 for thread designation

Fire Hose Coupling Washers

Swivel Washers

- Buna-N



ID	OD	Thickness	Part #
1-1/16"	1-7/16"	1/8"	SW100F
1-9/16"	2-1/16"	1/8"	SW150
2-9/16"	3-3/16"	3/16"	SW250
3-1/16"	3-3/4"	1/4"	SW300F
4-1/6"	5-1/8"	1/4"	SW400F
4-9/16"	5-7/8"	1/4"	SW450F
5-3/32"	6-13/32"	1/4"	SW500F
6-1/16"	7-1/8"	1/4"	SW600F

Tail Washers

- EPDM



ID	OD	Thickness	Fits Bowl Size	Part #
1-9/16"	1-3/4"	3/16"	1-11/16"	RTW150
1-9/16"	1-15/16"	3/16"	1-13/16"	STW150
1-5/8"	2-1/8"	3/16"	1-15/16"	DTW150
2-9/16"	3"	1/4"	2-3/4"	STW250
2-5/8"	3-1/4"	1/4"	2-7/8" & 3"	DTW250

Expansion Rings

- 85/15 red brass



OD	Length	Part #
1"	1-1/4"	ER10125
1-1/2"	3/4"	ER1575
1-1/2"	7/8"	ER1587
1-1/2"	1"	ER1510
1-1/2"	1-1/4"	ER15125
1-3/4"	1-1/4"	ER17125
2-7/16"	1-1/4"	ER27125
2-7/16"	1-1/2"	ER27150
3"	2"	ER3020

Style Brute X-Pander

Compact Hand Pump

- designed for forestry service, fire departments, small distributors and ski areas
- All-in-one design means fewer parts and no hydraulic connections making the X-Pander reliable and service free.
- may be used to attach 1" through 3" couplings
- ideal for in-house use or mounted in a service van for field repairs
- size: 13" wide x 17" deep x 10" high
- weight: 45 lbs.



Part #

BruteXpander

Note: Brute expanders *do not* include any expansion unit assemblies. They must be ordered separately.

Expansion Unit Assemblies



Description	Part #
1 1/2"	16154
2 1/2" (Storz also)	16171

For a complete list of all available expansion units and sizes contact the factory for assistance.

Synthetic Mill Hose

Ideal for open end discharge applications. **Not intended for fire fighting service.**

Outer construction:
single jacket, all polyester

Tube construction:
black, natural rubber liner

Consult the factory for pricing and availability for any of the following features:

- 75' lengths
- other threads and configurations
- hoses coupled with field reattachable couplings (Flat Seal)

rated pressure: **250 PSI** *

working pressure: **112 PSI** *

* at ambient temperature 21°C (70°F)

Uncoupled

Size	Bowl	Length	Part #
1"	1-1/4"	50'	M10-50UC
1"	1-1/4"	100'	M10-100UC
1½"	1-11/16"	25'	M15-25UC
1½"	1-11/16"	50'	M15-50UC
1½"	1-11/16"	100'	M15-100UC
2"	2-1/4"	25'	M20-25UC
2"	2-1/4"	50'	M20-50UC
2"	2-1/4"	100'	M20-100UC
2½"	2-11/16"	25'	M25-25UC
2½"	2-11/16"	50'	M25-50UC
2½"	2-11/16"	100'	M25-100UC
3"	3-3/8"	25'	M30-25UC
3"	3-3/8"	50'	M30-50UC
3"	3-3/8"	100'	M30-100UC
4"	4-3/8"	25'	M40-25UC
4"	4-3/8"	50'	M40-50UC
4"	4-3/8"	100'	M40-100UC
6"	6-3/8"	25'	M60-25UC
6"	6-3/8"	50'	M60-50UC



uncoupled

Coupled with female and male expansion ring couplings

Size	Length	Rocker Lug Aluminum <i>NPSH</i> RAS	Rocker Lug Aluminum <i>Fire Thread</i> RA***
1½"	50'	M15-50RAS	---
1½"	100'	M15100RAS	---
2"	50'	M20-50RAS	---
2"	100'	M20100RAS	---
2½"	25'	---	M25-25RA***
2½"	50'	---	M25-50RA***
2½"	100'	---	M25100RA***



coupled

Note: *** See Page 629 for thread designation

Mill Hose - White

Ideal for open end discharge applications. **Not intended for fire fighting service.**

Outer construction:
single jacket, all polyester

Tube construction:
black, natural rubber liner

Consult the factory for pricing and availability for any of the following features:

- additional lengths
- other configurations

**Coupled with NPSH female and male King short shank couplings, preformed clamps
Aluminum shank with brass pin lug swivel nut**



Size	Clamps per End	Length	Working Pressure PSI at 21°C (70°F)	Part #
1½"	2	25'	75	M15-25KAS
1½"	2	50'	75	M15-50KAS
2"	2	25'	75	M20-25KAS
2"	2	50'	75	M20-50KAS
2½"	2	25'	50	M25-25KAS
2½"	2	50'	50	M25-50KAS
3"	3	25'	50	M30-25KAS
3"	3	50'	50	M30-50KAS

Coupled with female and male (C & E) global aluminum cam and groove, preformed clamps



Size	Clamps per End	Length	Working Pressure PSI at 21°C (70°F)	Part #
1½"	2	25'	112	M15-25GAX
1½"	2	50'	112	M15-50GAX
2"	2	25'	112	M20-25GAX
2"	2	50'	112	M20-50GAX
2½"	2	25'	112	M25-25GAX
2½"	2	50'	112	M25-50GAX
3"	2	25'	112	M30-25GAX
3"	2	50'	112	M30-50GAX

Synthetic Double Jacket Mill Hose - Uncoupled

Ideal for open end discharge applications. *Not intended for fire fighting service.*

Outer construction:

double jacket, all polyester

Tube construction:

black, natural rubber liner

rated pressure: **250 PSI** *

working pressure: **200 PSI** *

* at ambient temperature 21°C (70°F)

Uncoupled¹

Size	Bowl	Length	Part #
1½"	1-13/16"	50'	DM15-50UC
1½"	1-13/16"	100'	DM15-100UC
2"	2-5/16"	50'	DM20-50UC
2"	2-5/16"	100'	DM20-100UC
2½"	2-7/8"	50'	DM25-50UC
2½"	2-7/8"	100'	DM25-100UC



uncoupled

¹ Double jacket hoses are *not* recommended for use with field reattachable couplings (Flat Seal).

Polyester Double Jacket Mill Hose - Coupled

Not intended for fire fighting service.

Outer construction:

double jacket, all polyester

Tube construction:

black, natural rubber liner

rated pressure: **250 PSI** *

working pressure: **200 PSI** *

* at ambient temperature 21°C (70°F)

Coupled with female and male thread, rocker lug, aluminum expansion ring couplings¹

Size	Bowl	Length	Thread	Part #
1½"	1-13/16"	50'	NPSH	DM15-50RAS
1½"	1-13/16"	100'	NPSH	DM15100RAS
2½"	2-7/8"	50'	Fire thread	DM25-50RA ***
2½"	2-7/8"	100'	Fire thread	DM25100RA ***



coupled

¹ Double jacket hoses are *not* recommended for use with field reattachable couplings (Flat Seal).

Note: *** See Page 629 for thread designation



300# Single Jacket All Polyester Fire Hose

Outer construction:
single jacket, all polyester

Tube construction:
EPDM rubber lining

Consult the factory for pricing and availability for any of the following features:

- 25' and 75' lengths
- U/L labeled hoses
- other threads and configurations
- hoses coupled with field reattachable couplings (Flat Seal)

proof pressure: **300 PSI** *
service test pressure: **150 PSI** *
working pressure: **135 PSI** *
* at ambient temperature 21°C (70°F)



uncoupled

Uncoupled

Size	Bowl	Length	Part #
1½"	1-¾"	50'	A315-50UC
1½"	1-¾"	100'	A315-100UC
2"	2-1/4"	50'	A320-50UC
2"	2-1/4"	100'	A320-100UC
2½"	2-13/16"	50'	A325-50UC
2½"	2-13/16"	100'	A325-100UC
3"	3-3/8"	50'	A330-50UC
3"	3-3/8"	100'	A330-100UC

Coupled with female and male expansion ring couplings



coupled

Size	Length	Rocker Lug Aluminum <i>NPSH</i> RAS	Rocker Lug Aluminum <i>Fire Thread</i> RA***
1½"	50'	A315-50RAS	---
1½"	100'	A315100RAS	---
2"	50'	A320-50RAS	---
2"	75'	A320-75RAS	---
2"	100'	A320100RAS	---
2½"	50'	A325-50RAS	A325-50RA***
2½"	100'	A325100RAS	A325100RA***
3"	50'	A330-50RAS	---
3"	75'	A330-75RAS	---
3"	100'	A330100RAS	---

Note: *** See Page 629 for thread designation

500# Single Jacket All Polyester Fire Hose

Outer construction:
single jacket, all polyester

Tube construction:
EPDM rubber lining

proof pressure: **500 PSI** *
service test pressure: **250 PSI** *
working pressure: **225 PSI** *

* at ambient temperature 21°C (70°F)

Consult the factory for pricing and availability for any of the following features:

- 75' lengths
- U/L labeled hoses
- other threads and configurations
- hoses coupled with field reattachable couplings (Flat Seal)



uncoupled

Uncoupled

Size	Bowl	Length	Part #
1½"	1-¾"	50'	A515-50UC
1½"	1-¾"	100'	A515-100UC
2½"	2-13/16"	50'	A525-50UC
2½"	2-13/16"	100'	A525-100UC

Coupled with female and male expansion ring couplings

Size	Length	Rocker Lug Aluminum NPSH RAS	Rocker Lug Aluminum Fire Thread RA***
1"	50'	A510-50RAS	---
1"	100'	A510100RAS	---
1½"	25'	A515-25RAS	---
1½"	50'	A515-50RAS	---
1½"	100'	A515100RAS	---
2½"	25'	A525-25RAS	A525-25RA***
2½"	50'	A525-50RAS	A525-50RA***
2½"	100'	A525100RAS	A525100RA***



coupled

Note:*** See page 629 for thread designation

500# Single Jacket All-Polyester Fire Hose - UL labeled



Outer construction:
single jacket, all polyester

Tube construction:
EPDM rubber lining

proof pressure: **500 PSI** *
service test pressure: **250 PSI** *
working pressure: **225 PSI** *

* at ambient temperature 21°C (70°F)

- Underwriters Listed

Consult the factory for pricing and availability for any of the following features:

- impregnated hose
- other lengths
- other threads and configurations



M
Fire

Coupled with female and male NST expansion ring couplings

Size	Coupling Type	Length	Part #
1½"	combo lug, brass	50'	A515U50CBF
1½"	combo lug, brass	75'	A515U75CBF
1½"	combo lug, brass	100'	A515U100CBF

500# Single Jacket Fire Hose - Color Impregnated

Outer construction:
single jacket

Tube construction:
EPDM rubber lining

proof pressure: **500 PSI** *
service test pressure: **250 PSI** *
working pressure: **225 PSI** *

* at ambient temperature 21°C (70°F)

Consult the factory for pricing and availability for any of the following features:

- other colors
- other lengths
- other threads and configurations



coupled

Coupled with female and male expansion ring couplings

Size	Coupling Type	Length	Color	Part #
1½"	rocker lug, aluminum, NPSH	50	orange	A515OR50RAS

800# Double Jacket All Polyester Fire Hose

Outer construction:
double jacket, all polyester

Tube construction:
EPDM rubber lining

Consult the factory for pricing and availability for any of the following features:

- 75' lengths
- other threads and configurations



coupled

proof pressure: **800 PSI** *
service test pressure: **400 PSI** *
working pressure: **360 PSI** *
* at ambient temperature 21°C (70°F)

Coupled with female and male expansion ring couplings ¹

Size	Length	Rocker Lug Aluminum NPSH RAS
1½"	50'	D815-50RAS
1½"	100'	D815100RAS

¹ Double jacket hoses are **not** recommended for use with field reattachable couplings (Flat Seal).

800# Double Jacket All Polyester Fire Hose - Yellow Impregnated

Outer construction:
double jacket, all polyester

Tube construction: black,
extruded synthetic rubber

Impregnation:
yellow

Consult the factory for pricing and availability for any of the following features:

- other lengths, threads, colors and configurations



coupled

proof pressure: **800 PSI** *
service test pressure: **400 PSI** *
working pressure: **360 PSI** *
* at ambient temperature 21°C (70°F)

Coupled with female and male thread, rocker lug, aluminum expansion ring couplings ¹

Size	Length	Thread	Part#
1½"	50'	NPSH	D815Y50RAS
1½"	100'	NPSH	D815Y100RAS
2½"	50'	Fire thread	D825Y50RA***
2½"	100'	Fire thread	D825Y100RA***

¹ Double jacket hoses are **not** recommended for use with field reattachable couplings (Flat Seal).
Note:*** See page 629 for thread designation

Blue Double Jacket Potable Water Hose

- NSF approved materials for potable water

Outer construction:
double jacket, all polyester

Tube construction:
thermoplastic

Impregnation: blue
(color coded for water)



proof pressure: **600 PSI** *
service test pressure: **300 PSI** *
working pressure: **270 PSI** *
* at ambient temperature 21°C (70°F)

Coupled with female and male NPSH thread, rocker lug, brass expansion ring couplings

Size	Length	Part #
1½"	50'	PW615B50RBS
1½"	100'	PW615B100RBS
2½"	50'	PW625B50RBS
2½"	100'	PW625B100RBS

500# All Polyester Rack Hose - Aluminum Couplings non-UL Labeled

Outer construction:
single jacket, all polyester

Tube construction:
clear thermoplastic

- **Not** to be used for washdown
For pin rack service / emergency fire fighting only.

proof pressure: **500 PSI** *
service test pressure: **250 PSI** *
working pressure: **225 PSI** *
* at ambient temperature 21°C (70°F)

Coupled with female and male aluminum expansion ring couplings

Size	Length	Thread	Folded Part #	Coiled Part #
1½"	50'	NST	R515-50RAF/F	R515-50RAF
1½"	50'	NPSH	R515-50RAS/F	R515-50RAS
1½"	100'	NST	R515100RAF/F	R515100RAF
1½"	100'	NPSH	R515100RAS/F	R515100RAS

- Rack hoses are **not** recommended for use with field reattachable couplings (Flat Seal).



folded



coiled

500# All Polyester Rack Hose - Aluminum Couplings UL Labeled

Outer construction:
single jacket, all polyester

Tube construction:
clear thermoplastic

- Underwriters Listed
- **Not** to be used for washdown
For pin rack service / emergency fire fighting only.

proof pressure: **300 PSI** *
service test pressure: **150 PSI** *
working pressure: **135 PSI** *
* at ambient temperature 21°C (70°F)

Coupled with female and male aluminum expansion ring couplings

Size	Length	Thread	Folded Part #	Coiled Part #
1½"	50'	NST	R515U50RAF/F	R515U50RAF
1½"	50'	NPSH	R515U50RAS/F	R515U50RAS
1½"	100'	NST	R515U100RAF/F	R515U100RAF
1½"	100'	NPSH	R515U100RAS/F	R515U100RAS

- Rack hoses are **not** recommended for use with field reattachable couplings (Flat Seal).



folded



coiled

M
Fire

400# Nitrile Covered Fire Hose - Light Duty - Red



uncoupled

Outer construction:
thin ribbed nitrile
Tube construction:
nitrile

proof pressure: **400 PSI** *
service test pressure: **200 PSI** *
working pressure: **180 PSI** *
* at ambient temperature 21°C (70°F)

- Synthetic rubber compound specially formulated for flexibility, as well as abrasion and chemical resistance. Ribbed for hose protection and easy handling.
- Ideal for industrial and construction washdown and discharge applications.

Consult the factory for pricing and availability for any of the following features:

- hoses coupled with field reattachable couplings (Flat Seal)

Uncoupled

Size	Bowl	Length	Part #
2"	2-1/4"	50'	H420R50UC



coupled

Coupled with Female and Male NPSH thread, brass expansion ring couplings with rocker lugs

Size	Length	Part #
2"	50'	H420R50RBS

500# Nitrile Covered Fire Hose - Light Duty - Red



uncoupled

Outer construction:
thin ribbed nitrile
Tube construction:
nitrile

proof pressure: **500 PSI** *
service test pressure: **250 PSI** *
working pressure: **225 PSI** *
* at ambient temperature 21°C (70°F)

Consult the factory for pricing and availability for any of the following features:

- 25' lengths
- other colors, threads and configurations
- hoses coupled with field reattachable couplings (Flat Seal)
- ideal for industrial and construction washdown and discharge applications.

Uncoupled

Size	Bowl	Length	Part #
1½"	1-13/16"	50'	H515R50UC
2½"	2-13/16"	50'	H525R50UC



coupled

Coupled with female and male expansion ring couplings

Size	Length	Rocker Lug Aluminum NPSH RAS
1½"	50'	H515R50RAS

Nitrile Covered Fire Hose - Heavy Duty - Yellow

Outer construction:
thick ribbed nitrile

Tube construction:
nitrile

proof pressure:

1½" - 3": **600 PSI**

4" - 5": **400 PSI**

6": **300 PSI**

service test pressure:

1½" - 3": **300 PSI**

4" - 5": **200 PSI**

6": **150 PSI**

working pressure:

1½" - 3": **270 PSI**

4" - 5": **180 PSI**

6": **135 PSI**

- Extruded interlocking matrix fire hose with 100% synthetic circular woven polyester reinforcement.
- heavy ribbed for severe service
- ideal for heavy-duty washdown, refineries and power plants
- all pressures listed are at ambient temperature 21°C (70°F)

Consult the factory for pricing and availability for any of the following features:

- 25' lengths
- other colors, threads and configurations
- hoses coupled with field reattachable couplings (Flat Seal)



uncoupled

Uncoupled

Size	Bowl	Length	Part #
1½"	1-13/16"	50'	H615Y50UC
2"	2-1/4"	50'	H620Y50UC
2½"	2-13/16"	50'	H625Y50UC
3"	3-3/8"	50'	H630Y50UC
4"	4-3/8"	50'	H440Y50UC
6"	6-3/8"	50'	H360Y50UC

Coupled with female and male expansion ring couplings

Size	Length	Rocker Lug Aluminum NPSH RAS
1½"	50'	H615Y50RAS



coupled

M
Fire

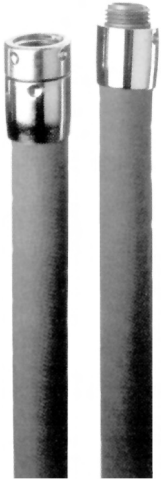
Coupled with female and male segmented collar style couplings

Storz Size	Length	Part #
2½"	50"	H425Y50SZ
4"	50"	H440Y50SZ
5"	50"	H450Y50SZ



coupled

Chemical Booster Fire Hose



Coupled with female and male thread, hole type, chromed brass couplings. The vertical braid construction and red ozone resistant outer cover is designed to withstand the weathering and abrasion associated with severe service. See page 652 for hole type spanner wrench.

- working pressure: **800 PSI** at ambient temperature 21°C (70°F)

Chromed brass hole type couplings

Size	Length	Thread	Part#
3/4"	50'	3/4" male x female NST*	80B07-50HCF
3/4"	50'	3/4" male x female NPSH	80B07-50HCS
3/4"	100"	3/4" male x female NST*	80B07-100HCF
3/4"	100'	3/4" male x female NPSH	80B07-100HCS
1"	50'	1" male x female NST*	80B10-50HCF
1"	50'	1" male x female NPSH	80B10-100HCS
1"	100'	1" male x female NST*	80B10-100HCF
1"	100'	1" male x female NPSH	80B10-100HCS

Aluminum Hose Type Booster Hose Couplings

- hardcoat finish
- complete set
- working pressure: **800 PSI** at ambient temperature 21°C (70°F)



Hose Size	Thread Type	Bowl Size	Part #
3/4"	1" NPSH	1-3/16"	ABH08118
3/4"	1" NPSH	1-1/4"	ABH08125
1"	1" NST (NH)*	1-7/16"	ABH10143F
1"	1" NPSH	1-7/16"	ABH10143S
1"	1" NST (NH)*	1-1/2"	ABH10150F
1"	1" NPSH	1-1/2"	ABH10150S
1"	1" NST (NH)*	1-9/16"	ABH10156F
1"	1" NPSH	1-9/16"	ABH10156S

* 3/4" and 1" NST threads are the same size

Also known as **Chemical Hose Thread (CHT)** or **Booster Hose Thread**

Brass Hole Type Booster Hose Couplings

- polished chrome plated
- complete set
- working pressure: **800 PSI** at ambient temperature 21°C (70°F)

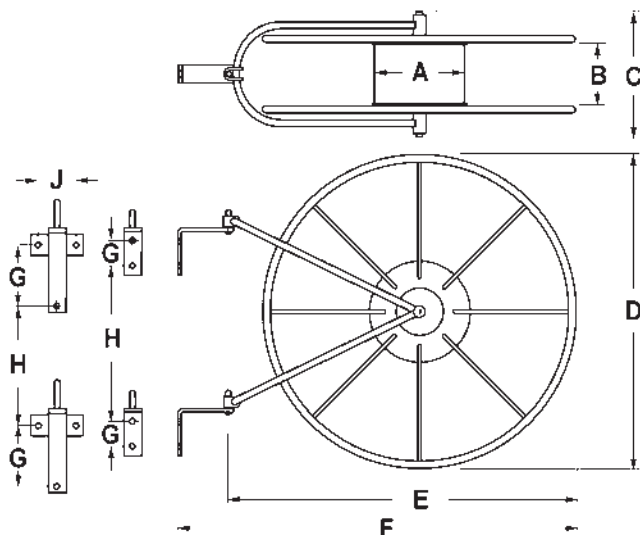


Hose Size	Thread Type	Bowl Size	Part #
3/4"	3/4" NST (NH)	1-3/16"	BW07118F-PC
3/4"	3/4" NPSH	1-3/16"	BW07118S-PC
1"	1" NST (NH)*	1-7/16"	BW10143F-PC
1"	1" NPSH	1-7/16"	BW10143S-PC
1"	1" NST (NH)	1-1/2"	BW10150F-PC
1"	1" NPSH	1-1/2"	BW10150S-PC
1"	1" NST (NH)*	1-9/16"	BW10156F-PC
1"	1" NPSH	1-9/16"	BW10156S-PC

* 3/4" and 1" NST threads are the same size.

Also known as **Chemical Hose Thread (CHT)** or **Booster Hose Thread**

Style V Swing Wall Reels



hose and valve not included

- Pivot mounting allows the reel to swing to the proper angle, preventing twists and kinks.
- red enameled all-steel construction for long, dependable service life
- Double row design of V5, V7, V8 and V9 holds two rows of hose for maximum capacity in minimum space.
- open sides allow hose to dry faster, preventing mold and mildew

Swing Wall Reels

Hose ID	Part #	Hose Capacity			A	B	C	D	E	F	G	H	J
		Rack	Single	Double									
1½" - 1¾"	FHR-V1	100'	75'	50'	8"	3"	7½"	21"	23"	27"	2"	11-3/8"	--
1½" - 1¾"	FHR-V2	150'	100'	75'	8"	3"	7½"	26"	29"	33"	2"	15"	--
1½"	FHR-V5	300'	200'	150'	8"	5½"	9½"	26"	30"	34"	2"	13"	--
2" - 2½"	FHR-V5	150'	100'	75'	8"	5½"	9½"	26"	30"	34"	2"	13"	--

Cover for Swing Wall Reels

- fluorescent red vinyl coated nylon with Velcro™ closures
- printed on both sides

used with	Dimensions	Part #
<i>FHR-V2</i>	26" x 8"	FHR-C
<i>FHR-V1</i>	21" x 6"	FHR-C1
<i>FHR-V5</i>	26" x 10"	HSRC26

Swing Type Hose Storage Reels

- steel construction
- red enamel finish
- 180° swing
- small reel hub allows for more hose storage

Hose ID	Hose Capacity		Part #
	Light Weight	Rubber Lined	
1½"	150'	50' - 75'	HSR18
1½"	250'	100'	HSR24
2½"	100'	100'	HSR25-24



M
Fire

Cover for Swing Type Hose Storage Reels

Cover for	Fits Hose Reel Diameter	Part #
<i>HSR18</i>	16" - 18"	HSRC18
<i>HSR24</i>	24"	HSRC24
<i>HSR25-24</i>	24" - 25"	HSRC25-24

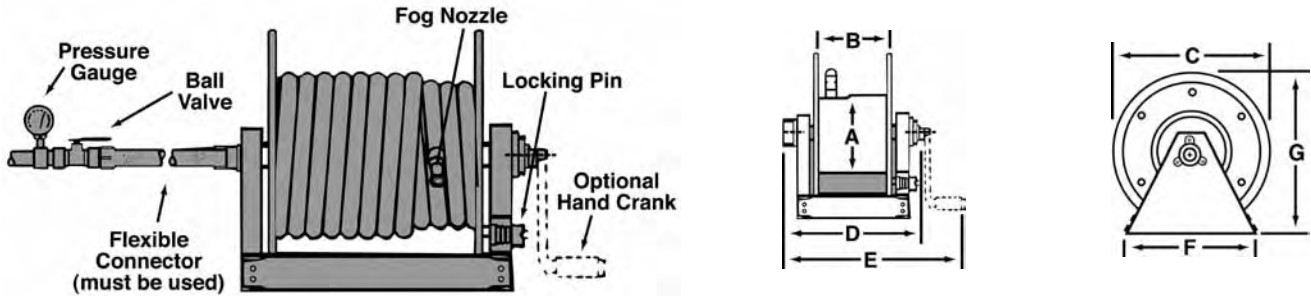


Continuous Flow Reels

Used to allow immediate and continuous flow of water at all times during deployment of hose. Can be easily operated by one person. Use with non-collapsible hose (hose not included) shown on page 645.

Standard Features:

- powder coated with an electrostatically-applied, thermally-fused, red polyester finish steel drum
- rims and universal mounting stand
- female NPT inlet with male NST outlet



Part #	Hose Size and Capacity			Dimensions (inches)							Inlet Size (inches)	Outlet Size (inches)	Wt. (lbs)
	¾"	1"	1½"	A	B	C	D	E	F	G			
CFR47-1-100	150	125	---	10½	11½	24	19¼	24	21¾	26	1	1	53
CFR47-150-100	250	150	100	10½	20½	24	28¼	33	21¾	26	1½	1½	60
CFR47-1-200	400	300	150	10½	28	24	35¾	40½	21¾	26	1½	1½	64
CFR47-150-200	---	---	200	10½	34	24	41¾	46½	21¾	26	1½	1½	72

Note: A flexible connector assembly must be installed directly between the hose reel inlet hub and the water supply. Failure to use the flexible connector assembly shall void the warranty.

Optional Accessories

Description	Part #
1" x 18" flexible connector	DX2836
1½" x 18" flexible connector	DX2839
hand crank	CFR-HC
repair kit (contains O-ring, Teflon® retaining ring for the inlet casting, spacer washer, 2 steel retaining rings for the manifold)	CFR-RK

Cover for Continuous Flow Hose Reels



Cover for	Dimensions	Part #
CFR47-1-100	26" x 20"	CFR47-C1
CFR47-1-200	26" x 36"	CFR47-C2
CFR47-150-100	26" x 29"	CFR47-C3
CFR47-150-200	26" x 42"	CFR47-C4

Global Continuous Flow Reel (original Wirt & Knox design)

Part #	Hose Size and Capacity			Dimensions (inches)							Female NPT	Male NST (NH)	Wt. (lbs)
	¾"	1"	1½"	A	B	C	D	E	F	G			
FD471-150-100	250	150	100	10	20	24	19	31	24¾	26	1½	1½	92

Saddle Hose Racks - Steel

- can be used for fire or water hose
- fabricated of heavy, 12 gauge sheet steel for rugged industrial and shipboard use
- provides compact and economical hose storage
- curved saddle design avoids sharp bends in the hose prolonging hose life
- red enamel finish

Hose Size	Hose Capacity			Wt. Lbs.	Part #
	Rack	Single Jacket	Double Jacket		
1½" - 1¾"	50'	---	---	---	HR1610-3
1½" - 1¾"	100'	---	---	---	HR1610-6
1½" - 2½"	200'	150'	100'	7.8	HR1610
2" - 2½"	50'	---	---	---	HR1610-4



Non-collapsible Fire and Utility Hose - Red

- working pressure: **150 PSI**

Consult the factory for pricing and availability for any of the following features:

- other lengths
- other threads and configurations

Coupled with female and male thread, rocker lug, brass expansion ring couplings

Size	Length	Thread Type	Dixon Part #
1½"	50'	NPSH	15B15-50RBS
1½"	100'	NPSH	15B15-100RBS
1½"	50'	NST (NH)	15B15-50RBF
1½"	100'	NST (NH)	15B15-100RBF



Hump Racks

- compact, neat and economical method of storing collapsible hose
- pivot mounting permits rack to swing, preventing kinks and twists
- rugged steel construction provides long, dependable service
- red enamel finish for protection and appearance
- open sides allow faster drying to prevent mold and mildew
- wall mounting brackets are standard

Hose Size	Hose Capacity			Part #
	Synthetic	Single Jacket	Double Jacket	
1½" - 1¾"	100'	50'	---	FHHR-1
1½" - 1¾"	150'	100'	50'	FHHR-3
2" - 2½"	100'	50'	---	FHHR-2
2" - 2½"	150'	100'	50'	FHHR-4
1½" - 1¾"	200'	150'	100'	FHHR-5



M
Fire

Cover for Hump Racks

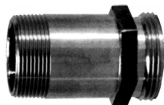
Cover for	Dimensions	Part #
FHHR-1 or FHHR-2	16" x 25½" x 6"	FHHR-C
FHHR-3 or FHHR-4	24" x 29½" x 6"	FHHR-C4
FHHR-5	33½" x 35½" x 6"	FHHR-C5



Fire Hose Pin Rack and Accessories



FHPR150



PRN150F



PRWB



PRC

Description	Part #
Steel red enameled rack is Underwriters Listed and Factory Mutual approved. Holds up to 100' of 1½" rack hose. For use with PRN150 and AVF150 .	<i>FHPR150</i>
1½" male NPT x 1½" male NPSH, polished brass rack nipple	<i>PRN150S</i>
1½" male NPT x 1½" male NST (NH), polished brass rack nipple	<i>PRN150F</i>
Aluminum wall bracket used to support hose rack independent of stand pipe valve	<i>PRWB</i>
Hose rack cover in 10 oz. red vinyl with Velcro™ closures Dimensions: 25" high x 30" wide x 6" deep	<i>PRC</i>

Continuous Swiveling Elbows



Short style radius, 2½" measured from the center of the waterway to the end of the discharge thread.

- cast brass finish
- designed to allow a hose to swing when connected
- full waterway reduces friction loss

Female NPT x Male NPT	Part #
1½" x 1½"	<i>CSES150T</i>

Cast Brass Angle Hose Valves



- cast brass with an aluminum handwheel
- for pressures up to 300 lbs.
- Underwriters Listed and Factory Mutual approved
- New York City Board of Standards and Appeals approved

Powhatan Cast Brass Domestic Angle Hose Valves

Description	Part #	Pkg Qty
1½" female NPT x 1½" male NPSH	AV150S	10
2½" female NPT x 2½" male Fire Thread	AV250***	6
1½" female NPT x 1½" female NPT	AVF150	10
2½" female NPT x 2½" female NPT	AVF250	6
1½" aluminum replacement handwheel	AV150-W	--
2½" aluminum replacement handwheel	AV250-W	--



female x male

Note: *** See Page 629 for thread designation

Powhatan Cast Brass Import Angle Hose Valves

Description	Part #	Pkg Qty
1½" female NPT x 1½" male NPSH)	AV150S-I	10
2½" female NPT x 2½" male Fire Thread	AV250***-I	6
1½" female NPT x 1½" female NPT	AVF150-I	10
2½" female NPT x 2½" female NPT	AVF250-I	6
1½" aluminum replacement handwheel	AV150-W	--
2½" aluminum replacement handwheel	AV250-W	--



female x female

Note: *** See Page 629 for thread designation



Roof Connections

Used to create roof connections, fire pump test connections, wall hydrants or sidewalk (free standing) hydrants.



straight



90°

- cast brass
- provides 250 GPM minimum per outlet
- Underwriters Listed
- for pressures up to **175 PSI** at ambient temperature 21°C (70°F)

Shape	Female NPT Inlet	(2) Male Outlets	Dixon Part #
straight	4"	2½" NPT	FRC4025 ¹
straight	4"	2½" Fire Thread	FRC4025***
straight	6"	2½" NPT	FRC6025
straight	6"	2½" Fire Thread	FRC6025***
90°	4"	2½" NPT	90FRC4025
90°	4"	2½" Fire Thread	90FRC4025***
90°	6"	2½" NPT	90FRC6025
90°	6"	2½" Fire Thread	90FRC6025***

¹ parts noted are *not* Underwriters Listed

Roof manifolds are also available, consult the factory for pricing and availability.

Note: *** See Page 629 for thread designation



Single Clapper Siamese



straight - back outlet



90° - bottom outlet

Single swing clapper with (2) pin lug swivel inlets. Provides the required 500 GPM minimum to supplement the fire protection as an auxiliary inlet connection to the water supply (250 GPM minimum per inlet). The swing clapper design provides an unobstructed waterway. Exposed Fire Department Connections (FDC) provide an economical method to satisfy local fire codes.

- cast brass finish
- branding: Auto-Spkr only
- Underwriters Listed and Factory Mutual approved
- for use up to **250 PSI** at ambient temperature 21°C (70°F)

Shape	Female NPT Outlet	(2) Female Inlets Fire Thread	Dixon Part #
straight	4"	2½"	SCS4025***
90°	4"	2½"	90SCS4025***

Note: *** See Page 629 for thread designation



Double Clapper Siamese



straight - back outlet



90° - bottom outlet

Double drop clappers with (2) pin lug swivel inlets. Provides the required 500 GPM minimum to supplement the fire protection as an auxiliary inlet connection to the water supply (250 GPM minimum per inlet). Exposed Fire Department Connections (FDC) provide an economical method to satisfy local fire codes.

- cast brass finish
- branding: Auto-Spkr, other branding also available (consult the factory for pricing and availability)
- 4" is Underwriters Listed and Factory Mutual approved
- for use up to **175 PSI** at ambient temperature 21°C (70°F)

Shape	Female NPT Outlet	(2) Female Inlets Fire Thread	Dixon Part #
straight	4"	2½"	DCS4025***
90°	4"	2½"	90DCS4025***
straight	6"	2½"	DCS6025***
90°	6"	2½"	90DCS6025***

¹ 6" is *not* Underwriters Listed or Factory Mutual approved

Note: *** See Page 629 for thread designation

Brass Caps with Chain

- cast brass finish
 - pin lug
 - *NOT intended for pressure applications - for protection only*
- C polished chrome plated

SAFETY
ALERT

Size	Thread	Description	Dixon Part #
¾"	NPSH	cast brass, rocker lug	RFC075
1"	NPSH	cast brass, rocker lug	RFC100
1½"	NPSH	cast brass, rocker lug	RFC150
1½"	NPSH	cast brass, pin lug	FC150
1½"	NPSH	polished chrome cast brass, pin lug	FC150-C
1½"	NST (NH)	cast brass, rocker lug	RFC150F
1½"	NST (NH)	cast brass, pin lug	FC150F
1½"	NST (NH)	polished chrome cast brass, pin lug	FC150F-C
2½"	NPSH	cast brass, pin lug	FC250
2½"	Fire Thread	cast brass, pin lug	FC250***
2½"	Fire Thread	cast brass, rocker lug	RFC250***
2½"	Fire Thread	polished chrome cast brass, pin lug	FC250***-C
3"	NPSH	cast brass, pin lug	FC300
3"	NST (NH)	cast brass, pin lug	FC300F
4"	NST (NH)	cast brass, pin lug	FC400F
4½"	NST (NH)	cast brass, pin lug	FC450F
6"	NPSH	cast brass, pin lug	FC600
6"	NST (NH)	cast brass, pin lug	FC600F



Aluminum caps are also available

Note: *** See Page 629 for thread designation

Brass Plugs with Chain

- cast brass finish
 - *NOT intended for pressure applications - for protection only*
- C polished chrome plated

SAFETY
ALERT

Size	Thread	Description	Dixon Part#
1½"	NPSH	cast brass, pin lug	FP150
1½"	NST (NH)	cast brass, pin lug	FP150F
2½"	NPSH	cast brass, pin lug	FP250
2½"	Fire Thread	cast brass, pin lug*	FP250***
2½"	Fire Thread	polished chrome cast brass, pin lug	FP250***C
3	NST (NH)	cast brass, pin lug	FP300F



M
Fire

Aluminum caps are also available

Note: *** See Page 629 for thread designation

Brass Plain Wye with Pin Lugs



- female swivel, two male outlets
- divides one stream into two

Female Thread)	(2) Male Thread	Dixon Part #
1½" NPSH	1½" NPSH	PW15S15S
1½" NST (NH)	1½" NST (NH)	PW15F15F
2½" Fire Thread	1½" NPSH	PW25***15S
2½" Fire Thread	1½" NST (NH)	PW25***15F
2½" Fire Thread	2½" Fire Thread	PW25***25***

Note: *** See Page 629 for thread designation

Aluminum Plain Wye with Rocker Lugs



- female swivel, two male outlets
- divides one stream into two

Female Thread	(2) Male Thread	Dixon Part #
1" NPSH	1" NPSH	ARPW10S10S
1½" NPSH	1" NPSH	ARPW15S10S
1½" NST(NH)	1" NPSH	ARPW15F10S

Thermoplastic Caps with Chain

Prevents entry of foreign material and protects male outlet threads on valves and hydrants.

M
Fire



- red finish
- **NOT intended to be pressurized** **SAFETY ALERT**

Size	Thread	Part #
1½"	NPSH	PFCW150
1½"	NST (NH)	PFCW150F
2"	NPSH	PFCW200
2½"	Fire Thread	PFCW250***
3"	NST (NH)	PFCW300F

Note: *** See Page 629 for thread designation

Thermoplastic Breakable Cap

Prevents entry of foreign material and protects female threads on pin lug fire department inlet connections.

- molded red thermoplastic
- used on pin lug females

Size	Part #	Opt Qty
2½"	PBC250	25



Thermoplastic Adjust-A-Plug

- molded red thermoplastic protective plug for swivel connections up to 2½"
- Two adjustable metal plates installed in the back of the plug can be mated with your local thread.
- The plug can be easily removed with a fire department spanner wrench.

Part #
PAP250



Universal Hose Cap

The universal push on - pull off cap protects all threads by gripping the valve or outlet on the inside of the waterway.

- **NOT** intended to be pressurized

SAFETY
ALERT

Size	Part #
2½"	PFC250U



Aluminum Breakable Cap

- for use on fire department inlet connections
- prevents entry of foreign matter and protects female threads
- breakable ears feature permits fast hose connection
- two eyebolts with nuts for attachment to female pin lug swivel
- painted red finish

Size	Part #
2½"	ABC250



Spanner and Hydrant Wrenches

Aluminum Universal Spanner Wrench



Part #	Pkg Qty	Wt. (lbs)
USW	25	.62

- for 3/4" to 3" pin lug and rocker lug couplings
- includes gas cock shutoff, pry bar and belt hook eye
- overall length 11-7/8"

Universal Wrench



Part #	Wt. (bs)
233	1.16

- for pin lug or sensible (rocker) lug couplings 1" thru 4 1/2"
- a gas cock shutoff is provided in the handle
- iron, red epoxy painted
- overall length 11 3/4"

Aluminum Forestry Pocket Spanner Wrench



Part #	Wt. (bs)
FSW1	.12

- for use on 1" and 1 1/2" hoses
- meets USFDA specification 5100-101C
- overall length 5"

Forestry Hose Clamp and Spanner



Part #	Wt. (bs)
FHCS150	.63

- hose clamp is constructed from cast aluminum
- off-set handle enables the user to easily operate the clamp while wearing gloves
- designed to be used with lightweight 1" and 1 1/2" hoses for pressures up to 200 PSI
- The brass locking device safely holds the clamp in position, when clamped onto the hose. A spanner is an integral part of the clamp.
- overall length 10"

Hole Type Spanner Wrench



Part #	Wt. (bs)
HTSW	.20

- Rugged and dependable compact hole spanner designed for use on 3/4" and 1" booster hose couplings.
- constructed of AL-MAG 35
- overall length is 7 1/2"

Storz Adjustable Hydrant Wrench



Part #	Wt. (bs)
SAHW	6

- ductile iron head
- knurled chrome plated handle
- manganese bronze adjustable jaw

Storz Spanner Wrench



Part #	Wt. (bs)
SZW2	1

- for use on 4", 5" and 6" Storz couplings
- one-piece design
- constructed of AL-MAG 35

Folding Pocket Spanner Wrenches



Material	Part #	Wt. (lbs)
aluminum	PSW	.30
brass	PSW-B	.72
die cast zinc	PSW-Z	.56
yellow plastic	PSW-Y	.27

- a compact wrench easily carried in your jacket pocket
- designed to fit 3/4" to 3" sensible (rocker) lug and pin lug couplings

Spanner and Hydrant Wrenches

Adjustable Hydrant Wrench

- plated iron head and ½" plated steel handle
- for pentagon nuts up to 1¾"
- built-in spanner for pin or rocker lug couplings
- overall length 16¼"

Part #	Pkg Qty	Wt. (lbs)
AHW	20	2.7



Pigtail Adjustable Hydrant Wrench

- double spanner head fits pin lug or rocker (sensible) lug couplings, pentagon nuts up to 1½" from point to flat, 1½" - 6" rocker lug caps, 2" - 4½" pin lug caps, and square nuts up to 1-1/8"

Part #	Wt. (lbs)
AHWPT	4.5



Heavy Duty Adjustable Hydrant Wrench

- plated iron head, 7/8" plated steel handle
- for pentagon hydrant nuts up to 1¾" from point to flat
- notched to fit 1¼" square hydrant nut
- spanner for pin lug and sensible (rocker) lug couplings, 1½" thru 6"
- overall length 18"

Part #	Pkg Qty	Wt. (lbs)
189	15	4.7



Double Head Adjustable Hydrant Wrench

- for pentagon hydrant nuts up to 1-7/8" and square heads up to 1½"
- designed to fit ¾" - 6" rocker lug or pin lug couplings, can also be used for long handle couplings
- ductile iron head with a deeply knurled chrome plated steel handle
- replaceable adjustable jaw is made of manganese bronze
- overall length 19½"

Part #	Wt. (lbs)
189DH	5



5 Hole Hydrant Wrench

- 5 pentagon holes designed to fit common hydrant nut sizes
- built-in spanner for pin or rocker lug couplings
- plated iron

Part #	Pkg Qty	Wt. (lbs)
PHW	25	1.94



Grip-All Spanner Wrench

- lightweight aluminum, fits ¾" to 6" split lug, rocker lug and pin lug couplings
- can be operated in tight quarters
- A gas cock shutoff is provided in the handle. The handle is shaped to fit your hand allowing a positive grip on the coupling.

Part #	Wt. (lbs)
GAW	.52



Long Handle Suction Spanner Wrench

- plated iron spanner for use on long handle, rocker lug, or pin lug couplings from 2½" to 6"
- open end slips over long handles for additional leverage while the claw fits rocker lugs or pin lugs, the other end can be used as a pry or crowbar
- inverted "T" body construction for lighter weight and improved strength
- can be used on Dixon's cam and groove pin lug or trapezoidal lug tank car adapters or 8" pin lug couplings
- overall length 18-¾"

Part #	Wt. (lbs)
LHW	3.25



Additional spanner wrenches on page 289



Single Hydrant Gate Valve with Handwheel

The hydrant gate valve is used to throttle the flow from a fire hydrant without damaging the hydrant itself.

- O-ring seal
- for use on standpipes and fire pumps where UL listing is required
- Underwriters Listed
- for use up to **175 PSI** (*water only*) at ambient temperature 21°C (70°F)



female inlet x male outlet

Female Inlet Fire Thread	Male Outlet Fire Thread	Cast Red Brass Part #	Wt (lbs)
2½"	2½"	UHGV250***	9

Note: *** See Page 629 for thread designation

replacement parts

Description	Part #	Wt (lbs)
replacement handwheel	UHGV250-W	.5

Brass Single Hydrant Gate Valves



- pin lug swivel, non-rising stem
- designed to protect fire hydrants from damage that can occur if used for throttling
- for use up to **175 PSI** (*water only*) at ambient temperature 21°C (70°F)
- aluminum gate valves are also available

Female x Male	Part #	Pkg Qty
2½" Fire Thread x 2½" male NPSH	HGV250***S	4
2½" Fire Thread x 2½" Fire Thread	HGV250***	4
replacement handle	HGV250-H	1

Note: *** See Page 629 for thread designation

Non-Rising Stem Wedge Disc Gate Valves

- cast brass
- solid wedge disc with tapered seats
- red iron handwheel, with cap and chain
- for use up to **300 PSI** working pressure at ambient temperature 21°C (70°F)
- 2½" Underwriters Listed and Factory Mutual approved



WDGV150F



WDGV250F

Female x Male	U/L	Working Pressure	Part #	Pkg Qty
1½" NPT x 1½" male NPSH	No	300 PSI	WDGV150S	2
2½" NPT x 2½" male Fire Thread	Yes	300 PSI	WDGV250***	2

Note: *** See Page 629 for thread designation

Note: *Not recommended for wet standpipe systems.* Use **AV250** on page 647 for wet standpipe systems.



Rising Stem Wedge Disc Gate Valves



- cast brass
- solid wedge disc with tapered seats
- red iron handwheel, with cap and chain
- 2½" Underwriters Listed

Female x Male	U/L	Working Pressure at 70°F	Part #	Pkg Qty
2½" NPT x 2½" male Fire Thread	No	200 PSI	RWDGV250***	2
3" NPT x 2½" male Fire Thread	Yes	300 PSI	RWDGV3025***	2



Note: *Not recommended for wet standpipe systems.* Use **AV250** on page 647 for wet standpipe systems.

Note: *** See Page 629 for thread designation

Backflow Preventer



Designed to give maximum protection against backflow caused by back-pressure or back-siphonage from a cross-connection wherein a contaminant hazard exists.

- consists of two spring-loaded poppet type check valves and a mechanically independent, hydraulically dependent pressure differential relief valve
- three top mounted test cocks ensure easy access during repair and maintenance
- supply pressures up to **175 PSIG** and water temperatures from **1°C to 82°C** (33°F to 180°F)
- meets USC's FCCC and HR Manual, Sec. 10, ASSE 1015, AWWA C-510 and CSA B64.4 specifications
- Underwriters Listed and Factory Mutual approved



NPT	Working Pressure	Part #	Wt. (lbs)
2"	175 PSI	BFP200	41

Create a Fire Hydrant Backflow Preventer by using the **RSMSA25***20T** (page 657) and the **DMH20T25***** (page 660).

Chicago Pattern Valve

- cast brass with a round aluminum handwheel
- for use up to **175 PSI** at ambient temperature 21°C (70°F)

Male Inlet	Male Outlet	Part #
1½" NPT	1½" NPSH	CPV150S



M
Fire

Straight Ball Drip Valves

This valve is designed to drain the low point of a system. It should be placed between the fire department connection and the swing check valve.

- will seal automatically under pressure
- install in the vertical position only
- working pressure: **175 PSI** at ambient temperature 21°C (70°F)

Male NPT	Male NPT	Part #	Wt. Lbs
½"	½"	SBDV50	.41
¾"	¾"	SBDV75	.47



Brass ¼ Turn Plug Type Wye Valves



- cast brass
- *not recommended for charged preconnected hose lines*
- for use up to **175 PSI** (*water only*) at ambient temperature 21°C (70°F)

SAFETY
ALERT

Female x Male	Part #	Pkg Qty
2½" Fire Thread x 1½" male NPSH replacement handle	S6175***S S6175-H	5 1

Note: *** See Page 629 for thread designation

Brass ¼ Turn Ball Type Wye Valve



- cast finish
- rocker lug swivel
- handles are not field replaceable
- operates easily under high pressure
- NSN# 4210-00-255-0234
- for use up to **175 PSI** (*water only*) at ambient temperature 21°C (70°F)

Female x Male	Part #
2½" Fire Thread x 1½" NPSH	S7337***S

Note: *** See Page 629 for thread designation

Brass Full Flow ¼ Turn Ball Type Hose Valves



- cast brass
- recommended for charged preconnected hose lines
- for use up to **175 PSI** (*water only*) at ambient temperature 21°C (70°F)

Female x Male	Part #
1½" NPSH x 1½" NPSH 2½" Fire Thread x 1½" NPSH	S7100-15S S7100***S

Note: *** See Page 629 for thread designation

M
Fire

Brass Double Female Swivels - Pin Lugs



- cast brass finish

Female Thread	Female Thread	Part #
1½" NPSH	1½" NPSH	DFP1515
1½" NST (NH)	1½" NST (NH)	DFP1515F
1½" NST (NH))	1½" NPSH	DFP15F15S
2½" NPSH	2½" NPSH	DFP2525
2½" Fire Thread	2½" NPSH	DFP25***25S
2½" Fire Thread	2½" Fire Thread	DFP25***25***

Aluminum or Brass Rocker lug adapters are also available

Note: *** See Page 629 for thread designation

Brass Female Swivel Adapters - Pin Lug

- cast brass finish

Female Thread	Female Thread	Part #
1½" NPSH	1½" NPT	SF150S
1½" NST (NH)	1½" NPT	SF150F
2½" Fire Thread	1½" NPT	SF25***15T
2½" Fire Thread	2" NPT	SF25***20T
2½" Fire Thread	2½" Fire Thread	SF25***25***
2½" Fire Thread	2½" NPT	SF25***25T
2½" Fire Thread	3"	SF25***30T
3" NST (NH)	3"	SF300F



Aluminum or Brass Rocker lug adapters are also available

Note: *** See Page 629 for thread designation

Brass Female Swivel Suction Adapter with Screen - Rocker Lug

- cast brass finish
- suction intake with strainer screen

Female Thread	Female Thread	Part #
2½" Fire Thread	1½" NPT	RSFSA25***15T
2½" Fire Thread	2" NPT	RSFSA25***20T
2½" Fire Thread	2½" NPT	RSFSA25***25T
2½" Fire Thread	3" NPT	RSFSA25***30T



Note: *** See Page 629 for thread designation

Brass Male Swivel Adapters - Pin Lug

- cast brass finish

Female Thread	Male Thread	Part #
1½" NPSH	1½" NPT	SM150S
1½" NPSH	1½" NST (NH)	SM15S15F
1½" NST (NH)	1½" NPT	SM150F
2½" Fire Thread	1½" NPT	SM25***15T
2½" Fire Thread	2" NPT	SM25***20T
2½" Fire Thread	2½" NPT	SM25***25T
2½" Fire Thread	2½" Fire Thread	SM25***25***
2½" Fire Thread	3" NPT	SM25***30T



M
Fire

Aluminum or Brass Rocker lug adapters are also available

Note: *** See Page 629 for thread designation

Brass Male Swivel Suction Adapter with Screen - Rocker Lug

- cast brass finish
- suction intake with strainer screen

Female Thread	Male Thread	Part #
2½" Fire Thread	1½" NPT	RSMSA25***15T
2½" Fire Thread	2" NPT	RSMSA25***20T
2½" Fire Thread	2½" NPT	RSMSA25***25T
2½" Fire Thread	3" NPT	RSMSA25***30T



Note: *** See Page 629 for thread designation

Brass Hydrant Adapters - Pin Lugs



Female Thread	Male Thread	Part #
1½" NPSH	¾" GHT	HA15S76
1½" NPSH	¾" NPSH	HA15S75S
1½" NPSH	¾" NPT	HA15S75T
1½" NPSH	1" NPSH	HA15S10S
1½" NPSH	1" NPT	HA15S10T
1½" NPSH	1½" NPT	HA15S15T
1½" NPSH	1½" NST (NH)	HA15S15F
1½" NPSH	2½" Fire Thread	HA15S25***
1½" NPT	1½" NPSH	HA15T15S
1½" NPT	1½" NST (NH)	HA15T15F
1½" NST (NH)	¾" GHT	HA1576
1½" NST (NH)	¾" NPSH	HA1575
1½" NST (NH)	¾" NPT	HA1575T
1½" NST (NH)	1" NPSH	HA1510
1½" NST (NH)	1" NPT	HA1510T
1½" NST (NH)	1½" NPSH	HA1515
1½" NST (NH)	1½" NPT	HA1515T
1½" NST (NH)	2½" Fire Thread	HA15F25***
2" NPSH	1½" NPSH	HA20S15S
2" NPSH	1½" NPT	HA20S15T
2" NPSH	1½" NST (NH)	HA20S15F
2" NPSH	2½" Fire Thread	HA20S25***
2" NPT	2½" Fire Thread	HA20T25***
2½" NPSH	1" NPT	HA25S10T
2½" NPSH	1½" NPSH	HA25S15S
2½" NPSH	1½" NPT	HA25S15T
2½" NPSH	1½" NST (NH)	HA25S15F
2½" NPSH	2½" Fire Thread	HA25S25***

Female Thread	Male Thread	Part #
2½" Fire Thread	¾" GHT	HA25***76
2½" Fire Thread	1" NPSH	HA25***10S
2½" Fire Thread	1" NPT	HA25***10T
2½" Fire Thread	1½" NPSH	HA25***15S
2½" Fire Thread	1½" NPT	HA25***15T
2½" Fire Thread	1½" NST (NH)	HA25***15F
2½" Fire Thread	2" NPSH	HA25***20S
2½" Fire Thread	2" NPT	HA25***20T
2½" Fire Thread	2½" NPSH	HA25***25S
2½" Fire Thread	2½" NPT	HA25***25T
2½" Fire Thread	2½" Fire Thread	HA25***25***
2½" Fire Thread	3" NPSH	HA25***30S
2½" Fire Thread	3" NPT	HA25***30T
2½" Fire Thread	3" NST (NH)	HA25***30F
3" NPSH	2½" NPSH	HA30S25S
3" NPSH	2½" Fire Thread	HA30S25***
3" NST (NH)	1½" NPSH	HA30F15S
3" NST (NH)	1½" NST (NH)	HA3015F
4" NST (NH)	2½" Fire Thread	HA40F25***
4½" NST (NH)	2½" Fire Thread	HA45F25***

Aluminum or Brass Rocker lug adapters are also available

Note: *** See Page 629 for thread designation

Brass Female to Male Hex Nipples



reducer



same size



increaser

Female Thread	Male Thread	Part #	Female Thread	Male Thread	Part #
3/4" GHT	1" NPT	FM7610T	2" NPT	1 1/2" NPSH	FM20T15S
1" NPSH	3/4" GHT	FM10S76	2" NPT	1 1/2" NST (NH)	FM2015F
1" NPT	3/4" GHT	FM1076	2" NPT	2" NPSH	FM2020
1" NPT	1" NPSH	FM1010	2" NPT	2 1/2" Fire Thread	FM20T25***
1" NPT	1" NST (NH)	FM1010F	2 1/2" NPSH	2 1/2" NPT	FM25S25T
1" NPT	1 1/2" NPSH	FM10T15S	2 1/2" NPSH	2 1/2" Fire Thread	FM25S25***
1" NPT	1 1/2" NST (NH)	FM1015F	2 1/2" NPT	2 1/2" NPSH	FM2525
1" NST (NH)	1" NPT	FM10F10T	2 1/2" NPT	2 1/2" Fire Thread	FM25T25***
1 1/2" NPSH	1 1/2" NPT	FM15S15T	2 1/2" Fire Thread	3/4" NPT	FM25***75T
1 1/2" NPSH	1 1/2" NST (NH)	FM15S15F	2 1/2" Fire Thread	1" NPT	FM25***10T
1 1/2" NPSH	2" NPT	FM15S20T	2 1/2" Fire Thread	1 1/2" NPSH	FM25***15S
1 1/2" NPSH	2 1/2" NPT	FM15S25T	2 1/2" Fire Thread	1 1/2" NPT	FM25***15T
1 1/2" NPSH	2 1/2" Fire Thread	FM15S25***	2 1/2" Fire Thread	2" NPT	FM25***20T
1 1/2" NPT	1 1/2" NPSH	FM1515	2 1/2" Fire Thread	2 1/2" NPSH	FM25***25S
1 1/2" NPT	1 1/2" NST (NH)	FM1515F	2 1/2" Fire Thread	2 1/2" NPT	FM25***25T
1 1/2" NPT	2 1/2" Fire Thread	FM15T25***	2 1/2" Fire Thread	3" NPT	FM25***30T
1 1/2" NPT	3" NST (NH)	FM1530F	3" NPSH	2 1/2" Fire Thread	FM30S25***
1 1/2" NST (NH)	1 1/2" NPSH	FM15F15S	3" NPT	2 1/2" NPT	FM3025T
1 1/2" NST (NH)	1 1/2" NPT	FM15F15T	3" NPT	2 1/2" Fire Thread	FM30T25***
1 1/2" NST (NH)	2" NPT	FM15F20T	3" NPT	3" NST (NH)	FM3030F
1 1/2" NST (NH)	2 1/2" NPT	FM15F25T	3 NST (NH)	2 1/2" NPT	FM30F25T
1 1/2" NST (NH)	2 1/2" Fire Thread	FM15F25***	3 NST (NH)	2 1/2" Fire Thread	FM30F25***
1 1/2" NST (NH)	3" NST (NH)	FM15F30F	3 NST (NH)	3" NPT	FM30F30T
2" NPSH	1 1/2" NPT	FM20S15T	4" NPT	2 1/2" Fire Thread	FM40T25***
2" NPSH	1 1/2" NST (NH)	FM20S15F	4" NPT	4" NST (NH)	FM4040F
2" NPSH	2 1/2" Fire Thread	FM20S25***	4" NPT	4 1/2" NST (NH)	FM4045F
2" NPSH	1 1/2" NPSH	FM20S15	4" NST (NH)	4" NPT	FM40F40T
			4 1/2" NST (NH)	4" NPT	FM45F40T
			6" NPT	6" NST (NH)	FM6060F
			6" NST (NH)	6" NPT	FM60F60T

Note: *** See Page 629 for thread designation



Brass Double Female Hex Couplings

- cast brass finish

Female Thread	Female Thread	Dixon Part #
1 1/2" NPT	1 1/2" NPSH	FFH15T15S
1 1/2" NPT	1 1/2" NST (NH)	FFH1515F
1 1/2" NST (NH)	1 1/2" NPSH	FFH15F15S
1 1/2" NST (NH)	1 1/2" NST (NH)	FFH15F15F
2 1/2" NPT	2 1/2" Fire Thread	FFH25T25***
2 1/2" Fire Thread	2 1/2" Fire Thread	FFH25***25***



female x female

Note: *** See Page 629 for thread designation

Brass Double Male Hex Nipples



reducer



same size



increaser

- cast brass
- other configurations are also available, consult the factory for pricing and availability

Male Thread	Male Thread	Dixon Part #
3/4" NPT	1 1/2" NPSH	DMH75T15S
3/4" NPT	1 1/2" NST (NH)	DMH7515F
1" NPT	1" NPSH	DMH1010
1" NPT	1" NST (NH)	DMH1010F
1" NPT	1 1/2" NPSH	DMH1015
1" NPT	1 1/2" NST (NH)	DMH1015F
1" NPT	2 1/2" Fire Thread	DMH10T25***
1 1/2" NPSH	1 1/2" NPSH	DMH15S15S
1 1/2" NPSH	1 1/2" NPT	DMH1515
1 1/2" NPSH	2 1/2" Fire Thread	DMH15S25***
1 1/2" NPT	1" NPSH	DMH1510
1 1/2" NPT	1" NST (NH)	DMH1510F
1 1/2" NPT	1 1/2" NPT	DMH15T15T
1 1/2" NPT	1 1/2" NST (NH)	DMH1515F
1 1/2" NPT	2" NPSH	DMH1520
1 1/2" NPT	2 1/2" Fire Thread	DMH15T25***
1 1/2" NST (NH)	1 1/2" NPSH	DMH15F15S
1 1/2" NST (NH)	1 1/2" NST (NH)	DMH15F15F
1 1/2" NST (NH)	2 1/2" Fire Thread	DMH15F25***
2" NPT	1 1/2" NPSH	DMH2015
2" NPT	1 1/2" NST (NH)	DMH2015F
2" NPT	2" NPSH	DMH2020
2" NPT	2 1/2" NPSH	DMH2025
2" NPT	2 1/2" Fire Thread	DMH20T25***

Male Thread	Male Thread	Part #
2 1/2" NPT	1 1/2" NPSH	DMH25T15S
2 1/2" NPT	2" NPSH	DMH2520
2 1/2" NPT	2 1/2" NPSH	DMH2525
2 1/2" NPT	2 1/2" Fire Thread	DMH25T25***
2 1/2" NPT	3" NPSH	DMH2530
2 1/2" NPT	3" NPT	DMH25T30T
2 1/2" NPT	3" NST (NH)	DMH2530F
2 1/2" Fire Thread	2 1/2" Fire Thread	DMH25***25***
2 1/2" Fire Thread	3" NST (NH)	DMH25***30F
3" NPT	2 1/2" NPSH	DMH3025
3" NPT	2 1/2" Fire Thread	DMH3025***
3" NPT	3" NPSH	DMH3030
3" NPT	3" NST (NH)	DMH3030F
4" NPT	4" NPSH	DMH4040
4" NPT	4" NST (NH)	DMH4040F
4" NPT	4 1/2" NST (NH)	DMH4045F
5" NPT	5" NST (NH)	DMH5050F
6" NPT	4 1/2" NST (NH)	DMH6045F
6" NPT	6" NST (NH)	DMH6060F

Note: *** See Page 629 for thread designation



Brass Double Males - Pin Lugs

- cast brass finish



Male Thread	Male Thread	Part #
1 1/2" NPSH	1 1/2" NPSH	DMP1515
1 1/2" NPSH	1 1/2" NPT	DMP15S15T
1 1/2" NST (NH)	1 1/2" NPSH	DMP15F15S
1 1/2" NST (NH)	1 1/2" NPT	DMP15F15T
1 1/2" NST (NH)	1 1/2" NST (NH)	DMP1515F
2 1/2" NPSH	2 1/2" NPSH	DMP2525
2 1/2" Fire Thread	2 1/2" NPSH	DMP25***25S
2 1/2" Fire Thread	2 1/2" NPT	DMP25***25T
2 1/2" Fire Thread	2 1/2" Fire Thread	DMP25***25***

Aluminum or Brass Rocker lug adapters are also available

Note: *** See Page 629 for thread designation

Thermoplastic Constant Flow Fog Nozzles



- red polycarbonate body with rubber bumper, black plastic and steel stem
- shutoff - straight stream - fog
- provides consistent volume at any spray angle
- 1" and 1½" are Underwriters Listed Canada
- for use up to **100 PSI (water only)** at ambient temperature 21°C (70°F)
- replacement gaskets available below

Size	Thread	90° Spray GPM @ 100 PSI	Part #
¾"	GHT	8	CFB75GHT ⁴
1"	SIPT (NPSH)	22	CFB100S
1½"	SIPT (NPSH)	75	CFB150S ¹
1½"	SIPT (NPSH)	150	HGCFB150S ²
2"	SIPT (NPSH)	75	CFB2015S ^{1,4}
2"	SIPT (NPSH)	150	CFB200S ^{2,4}
1"	NST (NH)	22	CFB100NST
1½"	NST (NH)	75	CFB150NST ¹
1½"	NST (NH)	150	HGCFB150NST ²
2½"	Fire Thread	150	CFB250*** ³
2½"	Fire Thread	215	HGCFB250*** ²



2½" provided with handles on CFB250***



1" through 2"

¹ standard flow

³ provided with handles

² high flow

⁴ not U/L listed

Note: *** See Page 629 for thread designation

Blue Thermoplastic Refinery Fog Nozzles

- blue nylon glass-filled body with rubber bumper and black plastic and steel stem
- resistant to petrochemicals
- shutoff - straight stream - fog
- provides consistent volume at any spray angle
- for use up to **100 PSI (water only)** at ambient temperature 21°C (70°F)
- replacement gaskets available below

Size	Thread	GPM @ 100 PSI	Part #
1½"	SIPT (NPSH)	75	RNB150S
1½"	NST (NH)	75	RNB150NST



M
Fire

Gaskets

- for use in Constant Flow Fog Nozzles and Refinery Fog Nozzles above
- *all dimensions are nominal*

Size	Thread Type	Dimensions			Part #
		ID	OD	Thickness	
1"	SIPT (NPSH)	.900"	1.270"	.125"	CFG100S
1½"	SIPT (NPSH)	1.510"	1.878"	.125"	CFG150S
2"	SIPT (NPSH)	1.680"	2.340"	.156"	CFG200S
1"	NST (NH)	.900"	1.270"	.125"	CFG100NST
1½"	NST (NH)	1.510"	1.906"	.125"	CFG150NST
2½"	Fire Thread	2.250"	3.000"	.187"	CFG250NST



Thermoplastic Fog Nozzles



3/4"



1" - 1/2"

- red polycarbonate body with brass stem
- adjusts from straight stream to fog
- for use up to **100 PSI** (*water only*) at ambient temperature 21°C (70°F)

** 3/4" GHT discharge @ 100 PSI:
 solid stream 20 GPM
 45° spray 25.1 GPM
 120° spray 30.9 GPM

Size	Thread	90° spray GPM @ 100 PSI	Part # with Bumper	Part # without Bumper
3/4"	GHT	**	FNB75GHT	---
3/4"	NPS	30.9	FNB75S	---
1"	NPS	11.4	FNB100S	FN100S
1"	NPS	30.9	HGB100S	---
1 1/2"	NPS	83.6	FNB150S	FN150S
1"	NST (NH)	11.4	FNB100NST	FN100NST
1"	NST (NH)	30.9	HGB100NST	---
1 1/2"	NST (NH)	83.6	FNB150NST	FN150NST

Thermoplastic Fog Nozzles



- brass stem and locking nut
- adjusts from straight stream to fog
- wings on sleeve for ease of adjustment
- for use up to **100 PSI** (*water only*) at ambient temperature 21°C (70°F)
- SL series nozzles are Factory Mutual approved.



FM approved
 Domestic

Global

Size	Thread	90° spray GPM @ 100 PSI	Polycarbonate body	GE Lexan™ body
			Part # with Bumper	Part # with Bumper
3/4"	NPSH	30.9 ¹	SL075	---
3/4"	GHT	30.9 ¹	SL075GHT	---
1"	NPSH	30.9 ¹	SL100	PFNB100S
1 1/2"	NPSH	75	SL150	PFNB150S
1 1/2"	NST (NH)	75	SL150NST	PFNB150NST

¹ 120° spray on 3/4" and 1"

Thermoplastic Fog Nozzles for Electrical Fires

M
 Fire



- *no straight stream*
- opens and closes in a 30° fog pattern - up to 120°

Size	Thread	GPM @ 100 PSI	Part # with Bumper
1 1/2"	NPS	75	FNBE150S
1 1/2"	NST (NH)	75	FNBE150NST

Gaskets for Thermoplastic Nozzles

- *all dimensions are nominal*



Size	Thread Type	Dimensions			Part #
		ID	OD	Thickness	
1"	NPS	.937"	1.234"	.125"	FNG100S HGG100S FNG150S
1"	NPS	1.000"	1.375"	.125"	
1 1/2"	NPS	1.500"	1.828"	.125"	
1"	NST (NH)	.937"	1.281"	.125"	FNG100NST HGG100NST FNG150NST
1"	NST (NH)	1.000"	1.375"	.125"	
1 1/2"	NST (NH)	1.500"	1.906"	.125"	

Brass Industrial Fog Nozzles

- shut off - straight stream - fog
- delivers 30° - 60° - 90° fog pattern
- supplied with bumper
- Underwriters Listed and Factory Mutual approved for Class A and B fires (except noted sizes)
- for use up to **100 PSI** (*water only*) at ambient temperature 21°C (70°F)

Size	Thread	90° Spray GPM @ 100 PSI	Part #
3/4"	GHT	---	BFN75GHT ¹
3/4"	NPSH	---	BFN75
1"	NPSH	36	BFN100
1 1/2"	NPSH	85	BFN150
2"	NPSH	108	BFN200 ¹
1"	NST (NH)	36	BFN100NST
1 1/2"	NST (NH)	85	BFN150NST
2 1/2"	Fire Thread	205	BFN250*** ¹



¹ not Factory Mutual approved

Note: *** See Page 629 for thread designation

Brass Electrical All-Fog Nozzle

Nozzle should be used in excess of 10 ft. from electrical apparatus and circuits not involving more than 250,000 volts.

SAFETY
ALERT

- *no straight stream*
- from shut off to 30° fog, adjustable thru 90° fog
- supplied with bumper
- Underwriters Listed and Factory Mutual approved
- for use up to **100 PSI** (*water only*) at ambient temperature 21°C (70°F)

Size	Thread	90° Spray GPM @ 100 PSI	Part #
1 1/2"	NPSH	90	BFNE150S

**Brass Heavy Duty Industrial Fog Nozzles**

- shut off - straight stream - fog
- delivers 30° - 60° - 90° fog pattern
- supplied with bumper
- Underwriters Listed and Factory Mutual approved
- for use up to **100 PSI** (*water only*) at ambient temperature 21°C (70°F)

Size	Thread	90° Spray GPM @ 100 PSI	Part #
1"	NPSH	---	HFN100
1 1/2"	NPSH	88 (+/-12)	HFN150
1"	NST (NH)	---	HFN100NST
1 1/2"	NST (NH)	88 (+/-12)	HFN150NST



M
Fire

Brass Higher Pressure Industrial Fog Nozzles



- shut off - straight stream - fog
- large one-piece rubber bumper with molded teeth
- knurled base
- Factory Mutual approved
- operating pressure from **25 PSI** to **300 PSI** (*water only*) at ambient temperature 21°C (70°F)

Size	Thread	90° Spray GPM @ 100 PSI	Part #
1½"	NPSH	117	HPFN150
1½"	NST (NH)	117	HPFN150NST

Brass Rack Nozzle



- shut off - straight stream - fog
- delivers 30° - 60° - 90° fog pattern
- supplied without bumper
- Underwriters Listed for Class A and B fires
- Factory Mutual approved
- for use up to **100 PSI** (*water only*) at ambient temperature 21°C (70°F)

Size	Thread	90° Spray GPM @ 100 PSI	Part #
1½"	NPSH	80	BRN150S
1½"	NSAT (NH)	80	BRN150NST

Brass Plain Hose Nozzles

- brass with satin finish
- operating pressure up to **100 PSI** (*water only*) at ambient temperature 21°C (70°F)



Size	Thread	Length	Orifice	Part #
¾"	GHT	6"	1/4"	BN6
¾"	NPSH	6"	1/4"	BN7
1"	NPSH	8"	5/16"	BN10
1¼"	NPSH	10"	3/8"	BN12
1½"	NPSH	10"	1/2"	BN15
2"	NPSH	12"	9/16"	BN20
2½"	NPSH	12"	1"	BN25
1"	NST (NH)	8"	5/16"	BN10F
1½"	NST (NH)	10"	1/2"	BN15F
2½"	Fire Thread	12"	1"	BN25***

Note: *** See Page 629 for thread designation

U.S. Coast Guard Approved AFFF/Water Fog Nozzles

Nozzles designed for maximum efficiency with AFFF (Aqueous Film Forming Foams) or water on shipboard, offshore rigs and industrial applications.

- corrosion resistant brass construction
- rubber-like bumper and handle for added protection
- Zytel® (nylon) horseshoe handle
- flush without shutting down
- combination fog and straight stream
- constant gallonage in all fog and straight stream pattern
- double row of molded teeth for excellent fog pattern
- operating pressure up to **100 PSI** (*water and AFFF only*) at ambient temperature 21°C (70°F)



CGSN150F



CGSN151F

Size	Thread	Description	Fog Flow @ 100 PSI	Orifice	Length	Weight	Approval #	Part #
1½"	NPSH	nozzle	95 GPM	5/8"	10¼"	9 lbs.	---	CGSN150S
1½"	NPSH	nozzle w/pistol grip	95 GPM	15/16"	11½"	14.5 lbs	---	CGSN151S
1½"	NST (NH)	nozzle	95 GPM	5/8"	10¼"	9 lbs.	162.027/13/0	CGSN150F
1½"	NST (NH)	nozzle w/pistol grip	95 GPM	15/16"	11½"	14.5 lbs..	162.027/11/0	CGSN151F

U.S. Coast Guard Approved Fog Nozzles

- designed to U.S. Coast Guard specification for fighting fires with drafted water
- required equipment for all commercial vessels under U.S. registry
- corrosion resistant brass construction
- combination fog and straight stream for shipboard fire fighting
- operating pressure up to **100 PSI** (*water only*) at ambient temperature 21°C (70°F)



Size	Thread	Fog Flow @100 PSI	Approval #	Part #
1½"	NPSH	55 GPM		CGN150S
1½"	NST(NH)	55 GPM	162.027/9/0	CGN150F
2½"	Fire Thread	108 GPM	162.027/10/0	CGN250***

Note: *** See Page 629 for thread designation

Applicators are available on special order. *Consult the factory for pricing and availability.*

Size	Description	Part #
1½"	replacement tip	CGN150-TIP
2½"	replacement tip	CGN250-TIP

Aluminum Ball Shut-Off Nozzle - Bolted Style

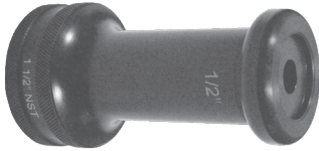


- lightweight cast aluminum body with pistol grip
- hardcoated female swivel inlet and male outlet
- maximum operating pressure to **200 PSI** (*water only*) at ambient temperature 21°C (70°F)

Inlet Thread	Outlet Thread	Waterway	Part #
1½" female NPSH	1½" male NPSH	1-3/8"	ACPSO150S
1½" female NST (NH)	1½" male NST (NH)	1-3/8"	ACPSO150F

Aluminum Tips for Ball Shut-Off Nozzles

- lightweight anodized aluminum construction
- for use up to **200 PSI** (*water only*) at ambient temperature 21°C (70°F)



Size	Thread	Orifice ¹	Length	Part #
1"	NST (NH)	½"	4"	ANT100F
1½"	NPSH	½"	4¾"	ANT150S
1½"	NST (NH)	½"	4¾"	ANT150F

¹ other orifice sizes available

Ball Shut-Off Nozzles



- Full time swivel base ensures the durable rubber-like handle is positioned for easy operation.
- for use up to **100 PSI** (*water only*) at ambient temperature 21°C (70°F)

Base Thread	Tip Thread	Waterway	Length	Part #
1½" NPSH	1½" NPSH	1-3/8"	4¾"	BSO150S
1½" NST (NH)	1½" NST (NH)	1-3/8"	4¾"	BSO150F
Zytel® replacement handle				BSO150-H

M
Fire

Brass Nozzle Tips

- for use up to **100 PSI** (*water only*) at ambient temperature 21°C (70°F)



Size	Thread	GPM @ 100 PSI	Orifice	Length	Dixon Part #
1"	NST (NH)	74	½"	4-¾"	BNT100F
1½"	NPSH	74	½"	4-3/8"	BNT150S
1½"	NST (NH)	74	½"	4-3/8"	BNT150F

Omega™ Monitor

- brass construction
- cast-in turning vanes for a more efficient flow
- 4 bolt hole pattern on flange
- 360° horizontal and 150° vertical travel
- friction loss: 10 PSI at 800 GPM (.7 bar at 3030 LPM)
- Factory Mutual approved
- other configurations available



Size	Inlet Configuration	Outlet	Waterway	Flow	Weight	Part #
17" x 11½"	3" flange	2½" Fire Thread	3"	1250 GPM	72 lbs.	AK3526-300***L

Note: *** See Page 629 for thread designation

Monitor Nozzle

Aquastream™ Master Stream, a fixed gallonage master stream designed for heavy-duty use on fixed monitors. Factory set at 500 GPM (1900 LPM) - can be changed in the field to 300 or 700 GPM (1140 or 2660 LPM).

- brass construction
- fixed teeth
- swivel nut
- Factory Mutual approved
- operating pressure: **100 PSI** (*water only*) at ambient temperature 21°C (70°F)



Size	Thread	Length	Weight	Part #
2½"	Fire Thread	7"	14.5 lbs.	AK4450***

Note: *** See Page 629 for thread designation

Steel FirePro™ Monitor

- carbon steel construction
- stainless steel discharge tip and ball bearings
- red epoxy finish standard
- 150# ASA raised face 4" flange
- 360° horizontal and 140° vertical travel
- seamless 2½" monitor - rated at 750 GPM
- Factory Mutual approved



Size	Inlet Configuration	Outlet	Waterway	Flow	Weight	Part #
22" x 13"	4" flange	2½" Fire Thread	2½"	750 GPM	50 lbs.	FP475S***

Note: *** See Page 629 for thread designation

Master Stream Nozzle

- factory set at 500 GPM
- a straight stream to fog 'quick throw' pattern change
- constant gallonage
- Factory Mutual approved



Size	Thread	Material	Weight	Part #
2½"	Fire Thread	brass	19 lbs.	FP500B***
2½"	Fire Thread	aluminum	--	FP500A***

Note: *** See Page 629 for thread designation

Storz Fittings

- machined from forged 6061 - T6 aluminum
- hardcoat anodized components per MIL-A-8625 Type III Class 1
- Buna-N gaskets
- working pressure: **150 PSI** at ambient temperature 21°C (70°F)
- stainless steel lock lever assembly on 4", 5" and 6"

Storz x Female Swivel



Storz x Female Swivel	Part #
4" x 2½" Fire Thread	SZSF4025***
4" x 4" NST	SZSF4040F
4" x 4½" NST	SZSF4045F
5" x 2½" Fire Thread	SZSF5025***
5" x 4" NST	SZSF5040F
5" x 4½" NST	SZSF5045F

Storz x Rigid Male



Storz x Rigid Male	Part #
2½" x 2½" Fire Thread	SZM2525***
4" x 2½" Fire Thread	SZM4025***
5" x 2½" Fire Thread	SZM5025***
5" x 4½" NST	SZM5045F
1½" x 1" NPT	SZM1510T
2" x 1½" NPT	SZM2015T
4" x 3" NPT	SZM4030T
5" x 4" NPT	SZM5040T
6" x 6" NPT	SZM6060T

Storz x Rigid Female



Storz x Rigid Female	Part #
4" x 2½" Fire Thread	SZF4025***
5" x 2½" Fire Thread	SZF5025***
5" x 4½" NST	SZF5045F
1½" x 1" NPT	SZF1510T
2" x 1½" NPT	SZF2015T
3" x 2" NPT	SZF3020T
4" x 3" NPT	SZF4030T
4" x 4" NPT	SZF4040T
5" x 4" NPT	SZF5040T
5" x 5" NPT	SZF5050T
5" x 6" NPT	SZF5060T
6" x 6" NPT	SZF6060T



Storz Cap with Cable



Storz Cap	Part #
1½"	SZC150
2"	SZC200
2½"	SZC250
3"	SZC300
4"	SZC400
5"	SZC500
6"	SZC600

Storz Gaskets

- Buna-N
- gasket faces should be kept free of sand, grit, etc. and lubricated with O-ring grease or silicone

The pressure seals have a flat face ; while the suction seals have a beaded face 

**SAFETY
ALERT**

Storz Size	Application	Part #
4"	pressure	SZG400P
4"	suction	SZG400S
5"	pressure	SZG500P
5"	suction	SZG500S
6"	pressure / suction	SZG600P

Note: ***
See Page 629 for thread designation

Forestry Non Weeping Fire Hose

Outer construction:
single jacket, all polyester

Tube construction:
thermoplastic

Impregnation: yellow

Consult the factory for pricing and availability for any of the following features:

- 25' lengths
- other threads and configurations

Proof pressure: **600 PSI** *

Service test pressure: **300 PSI** *

Working pressure: **270 PSI** *

* at ambient temperature 21°C (70°F)



Coupled with female and male NPSH expansion ring rocker lug couplings

Size	Length	Part #
1"	50'	NF610Y50RAS
1"	100'	NF610Y100RAS
1½"	50'	NF615Y50RAS
1½"	100'	NF615Y100RAS

Forestry Mop Up Hose

Forest fire applications include mop-up, low volume hand lines, filling pump cans, supplying sprinklers and remote fire line protection. 50' coil diameter is 9".

Outer construction:
single jacket, synthetic

Tube construction:
thermoplastic

Impregnation: yellow

Consult the factory for pricing and availability for any of the following features:

- other threads and configurations

Proof pressure: **300 PSI** *

Service test pressure: **150 PSI** *

Working pressure: **135 PSI** *

* at ambient temperature 21°C (70°F)



Coupled with female and male brass ferrule type garden hose couplings

Size	Length	Part #
¾"	50'	NF307Y50GHT

¼ Turn Forestry Adapters

- forged aluminum
- maximum working pressure **300 PSI** at ambient temperature 21°C (70°F)
- adapters have a common quarter turn sexless head (a 1½" QT fitting will mate with a ¾" QT or 1" QT)
- replacement gaskets: **QTG-F**



male



female

Thread	Male Part #	Female Part #
¾" GHT	QTM75GHT-F	QTF75GHT-F
1" NPS	QTM100S-F	QTF100S-F
1" NPT	QTM100T-F	QTF100T-F
1½" NPSH	QTM150S-F	QTF150S-F
1½" NPT	QTM150T-F	QTF150T-F



Thermoplastic Ball Shut-Off Nozzles

- lightweight
- glass reinforced plastic
- black pistol grip handle
- for use up to **150 PSI** (*water or AFFF only*) at ambient temperature 21°C (70°F)

Size	Thread	Part #
1½"	SIPT (NPSH)	PPSO150S
1½"	NST (NH)	PPSO150F

Thermoplastic Ball Shut-Off Nozzles



- lightweight
- glass reinforced plastic
- black pistol grip handle
- yellow nozzle tip can be detached to allow for installation of foam inductor
- for use up to **150 PSI** (*water or AFFF only*) at ambient temperature 21°C (70°F)

Size	Thread	GPM	Part #
1½"	SIPT (NPSH)	30	FNPSO150S-30
1½"	NST (NH)	30	FNPSO150F-30
1½"	SIPT (NPSH)	70	FNPSO150S-70
1½"	NST (NH)	70	FNPSO150F-70

Thermoplastic Plain Hose Nozzles



- thermoplastic
- red finish
- for use up to **100 PSI** (*water only*) at ambient temperature 21°C (70°F)

Size	Thread	Length	Orifice	Part #
1½"	NPS	10"	½"	PN15
1½"	NST (NH)	10"	½"	PN15F

Thermoplastic Penetrator Nozzle

The black and yellow penetrator nozzle is designed with standard 1½" NPSH male hose threads that are converted to female thread for connection to the hose using a double female rigid connector. It is specifically designed with a ¼" discharge orifice, which generates a high velocity water jet that is effective against deep seated wildland fires.

- for use up to **200 PSI** (*water only*) at ambient temperature 21°C (70°F)



Size	Thread	Length	Orifice	Part #
1½"	NPS	5½"	¼"	PFN4005S
1½"	NST (NH)	5½"	¼"	PFN4005F

Twin Tip Straight Stream Forestry Nozzles



- The solid, one-piece reversible twin tip have 1/4" and 3/8" orifices.
- for use up to **100 PSI** (*water only*) at ambient temperature 21°C (70°F)

Size	Thread	Length with tip	Length without tip	Orifice of base nozzle	Part #
1½"	NPSH	9"	7½"	½"	PTTF150S
1½"	NST (NH)	9"	7½"	½"	PTTF150F

Forestry Grade Ball Shut-Off Nozzles

- cast anodized aluminum body, hardcoated threads, and acetal ball
- working pressure up to **600 PSI** at ambient temperature 21°C (70°F)

Size	Thread	Waterway	Part #
1"	NPSH	¾"	FBSO100S
1½"	NPSH	1"	FBSO150S
1"	NST (NH)	¾"	FBSO100F
1½"	NST (NH)	1"	FBSO150F



Forestry Grade Ball Shut-Off Nozzle with Pistol Grip

- cast anodized aluminum body, hardcoated threads, and acetal ball
- working pressure up to **600 PSI** at ambient temperature 21°C (70°F)

Size	Thread	Waterway	Part #
1"	NPSH	¾"	FBSO100S-PG
1½"	NPSH	1"	FBSO150S-PG
1"	NST (NH)	¾"	FBSO100F-PG
1½"	NST (NH)	1"	FBSO150F-PG



Aluminum Tip for Ball Shut-Off Nozzles

- lightweight anodized aluminum construction
- for use up to **200 PSI** (*water only*) at ambient temperature 21°C (70°F)

Size	Thread	Orifice ¹	Length	Tip Part #
1"	NPSH	½"	4"	ANT100
1½"	NPSH	½"	4¾"	ANT150
1"	NST (NH)	½"	4"	ANT100F
1½"	NST (NH)	½"	4¾"	ANT150F

¹ other orifice sizes available



NPSH



NST



Aluminum Fog Nozzles

- constructed of anodized aluminum
- without bumper
- adjustable fog or straight stream
- color: black
- weight: 12 oz.
- Factory Mutual approved
- Federal Supply Schedule certified



Size	Thread	60° Spray GPM @ 100 PSI at 21°C (70°F)	Part #
1½"	NPS	52	AFN150
1½"	NST (NH)	52	AFN150NST

Forestry Fog Nozzles

- 6061-T6 aluminum, corrosion resistant plated
- maroon hardcoated barrel allows for easy identification
- offers two straight stream and two fog patterns
- combination fog and straight stream
- dual flow rate nozzles
- operating pressure up to **600 PSI (water only)**



FFN75GHT



FFN100



FFN150

Size	Thread	Dual Flow Rates		NSN	Forestry Service Specification	Part #
		1st Straight Stream GPM @ 100 PSI at 21°C (70°F)	2nd Straight Stream GPM @ 100 PSI at 21°C (70°F)			
¾"	GHT	1-2 *	3-4 *	---	---	FFN75GHT
1"	NPSH	12	25	4210-01-165-6603	5100-239A	FFN100
1½"	NPSH	25	70	---	5100-107A	FFN150
1"	NST (NH)	12	25	---	5100-239A	FFN100NST
1½"	NST (NH)	25	70	4210-01-167-1123	5100-107A	FFN150NST

* GPM rating @ 40 PSI at 21°C (70°F)



Aluminum ¼ Turn Ball Type Wye Valves - Forestry Grade

- cast aluminum, anodized body, hardcoated threads
- swivel inlet
- suitable for use with water and Aqueous Film Forming Foam
- built to United States Forest Service specifications

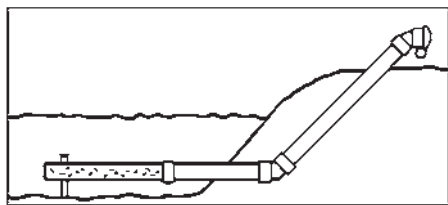


Female x Male	PSI at 21°C (70°F)	Part #
1" NPSH x 1" NPSH	600	FWV10S10S
1½" NPSH x 1" NPSH	600	FWV15S10S
1½" NPSH x 1½" NPSH	600	FWV15S15S
2½" Fire Thread x 1½" NPSH	400	FWV25***15S
2½" Fire Thread x 2½" Fire Thread	400	FWV25***25***

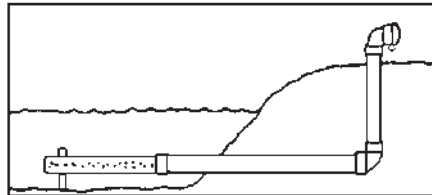
Note: *** See Page 629 for thread designation

Dry Hydrants

Typical Dry Hydrant Installations



45°
(preferred)



90°

Underwater Strainer Support

Description	Hardcoated Aluminum
	Part #
underwater strainer support	DHSSC6



Back Flushing Strainers

- length: 37"

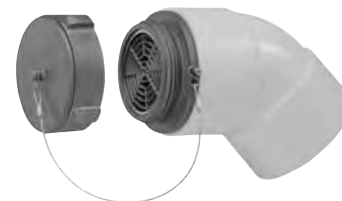
Size	Schedule 40 PVC pipe
	Part #
6"	DHS6BF
8"	DHS8BF *



* includes 8" x 6" reducer

Male Adapters and Caps

	90° Male Adapters	45° Male Adapters
Male NST (NH)	Hardcoated Aluminum	Hardcoated Aluminum
	Part #	Part #
4½"	ADH90M45F	ADH45M45F
6"	ADH90M60F	ADH45M60F



Adapters and caps sold separately

Rocker Lug Cap with Cable

Female NST (NH)	Hardcoated Aluminum
	Part #
4½"	ADHC450F
6"	ADHC600F



Female Adapters and Plugs

	90° Female Adapters	45° Female Adapters
Female NST (NH)	Hardcoated Aluminum	Hardcoated Aluminum
	Part #	Part #
4½"	ADH90F45F	ADH45F45F
6"	ADH90F60F	ADH45F60F



Adapters and plugs sold separately

Rocker Lug Plug with Cable

Male NST (NH)	Hardcoated Aluminum
	Part #
4½"	ADHP450F
6"	ADHP600F