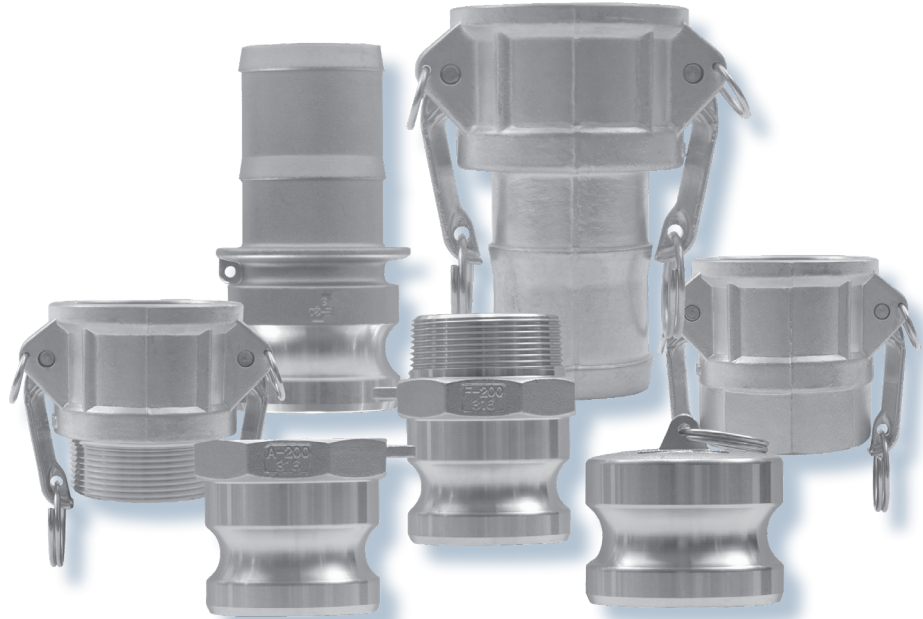




The Right Connection™

# Aluminum Global Cam & Groove

Dixon's line of aluminum global cam and groove fittings provides a higher quality product than most imported fittings. These fittings are gravity-fed die castings also known as permanent mold fittings.



---

## Benefits of Permanent Mold Castings vs. Most Imported Pressure Die Castings

- permanent mold process *reduces metal turbulence* virtually eliminating pin hole porosity that is commonly found in die castings
- eliminating pin hole porosity allows machined surfaces to be *pressure tight with consistent mechanical and physical properties*
- permanent mold castings have a *stronger impact resistance and will not shatter*
- permanent mold process *does not allow trapped gas in the fittings, resulting in a smooth, strong finish for the coupling*
- adapters and couplers available in *basic 8 configurations*
- available in *3/4", 1", 1 1/4", 1 1/2", 2", 2 1/2", 3", 4" and 6"*

**Call or click to find out more!**

---

**Dixon Bayco**  
[www.dixonbayco.com](http://www.dixonbayco.com)

**Dorval (Montreal), Quebec**  
tel: 514.422.9292  
toll free tel: 877.963.4966  
fax: 514.422.0166  
toll free fax: 866.422.0166

**Innisfil (Barrie), Ontario**  
tel: 705.436.1125  
toll free tel: 877.963.4966  
fax: 705.436.6251  
toll free fax: 877.436.6251

**Edmonton, Alberta**  
tel: 780.469.5444  
toll free tel: 877.963.4966  
fax: 780.463.9205  
toll free fax: 877.463.9205